



*The Brazilian autoparts industry is celebrating
improved performance every year*



**Great results,
good outlook**

■

The autoparts companies are forecasting investments of US\$ 1.35 billion in 2008

■

The need to supply the autoparts market in Brazil dates from the beginning of last century when car imports began followed by the assembling of CKD vehicles. The two largest representatives of the US market arrived in Brazil at this time: Ford in 1919, and General Motors in 1925. However, it was in the 1940s, during the Second World War, that Brazilian companies became aware of the great business potential in autoparts.

Up to then the Brazilian autoparts industry was no more than a group of small producers of tires, hoses, springs, batteries, and basic truck bodies. It happens that after the war the fleet of vehicles in Brazil was aging, as the US manufacturers had focused all production on military vehicles. Hence, local companies had to supply the parts market, so beginning the autoparts industry.

The years passed and in 2006 this industry had its best year, turning over no less than US\$ 29.8 billion, up 18% on 2005, accounting for 5% of Brazil's industrial GDP. Exports brought in US\$ 8.8 billion for companies in the segment.

ONE MORE – For 2007 estimates point to turnover of US\$ 35.7 billion, 19.8% up on the year before.

Out of total revenue, 63.4% of Brazilian component production will go to the assemblers, 12.5% will supply replacements, 16.1% will go to other markets, and 8% will go to cross sector supply, compared with 61.5%, 12%, 19% and 7.5% for 2006, respectively.

In 2007 the sector employed 7% more people, totaling 213,000 people. This has cut the level of idle capacity from 15% in 2006 to less than 13% – mainly because of the strong performance of the Brazilian market, creating great opportunities for investments in enlarging the industrial complex. Hence, companies are forecasting investments of US\$ 1.35 billion, up 3.8% than 2006.

Brazilian part exports have been growing since 2002: US\$ 3.9 billion, US\$ 4.8 billion, US\$ 6 billion, US\$ 7.5 billion, and US\$ 8.8 billion, with an estimated US\$ 8.9 billion fore 2007. Of the total exported in 2006, the USA, historically one of the largest buyers, acquired 29.2%, followed by Argentina, with 19.1%, Mexico, with 7.9%, and Germany with 7.8%. Currently Brazil exports autoparts and components to 165 countries.

Imports, from 123 nations, were up 1.9% from 2005 to 2006, totaling approximately US\$ 6.8 billion. The main purchases overseas are made in Germany, 16.7%, with the

Annual performance of Brazilian Autoparts Industry

	2004	2005	Variation	2006	Variation	2007*	Variation
Total sales (US\$ billion)	18,549	25,263	36.2%	29,800	18.0%	35,700	19.8%
Percentage distribution per destination							
Assemblers OEMs	58.5%	61.7%		61.5%		63.4%	
Aftermarket	13.4%	12.3%		12.0%		12.5%	
Exports	20.9%	18.7%		19.0%		16.1%	
Intersectorial	7.2%	7.3%		7.5%		8.0%	
Investments (US\$ billion)	0,843	1,413	67.6%	1,300	-8.0%	1,350	3.8%
Exports (direct and indirect)** (US\$ billion)	6,057	7,486	23.6%	8,764	17.1%	8,900	1.6%
Sales profit	4%	4%		4%		5%	
Number of employees (thousand employees)	187	197	5.3%	199	1.0%	213	7.0%

Source : Sindipeças

* Data for 2007 are estimated (Database October 2007). ** Exports of autoparts by autoparts manufacturers (direct) and assembly companies (indirect). Vehicles are not included.



ANYWHERE THROUGHOUT THE WORLD, WINNERS ARE KNOWN BY THEIR ACHIEVEMENTS.

MWM INTERNATIONAL, LEADER IN DIESEL ENGINES.

Leading the way in environmental orientation.

- Engines favored by automotive customers: 30 of each 100 commercial Diesel vehicles produced in the Mercosur are powered by MWM INTERNATIONAL engines.
- Engines from 2.5 to 9.3 liters and 50 to 367 hp.
- Exports for more than 30 countries.
- Leading edge technology and high quality.
- More than 3.4 million engines delivered in the Mercosur since 1953.
- 3 modern manufacturing plants in South America.
- Engines attending the most strict international standards emissions.

This is MWM INTERNATIONAL.
Get to know this power.



www.mwm-international.com.br

■

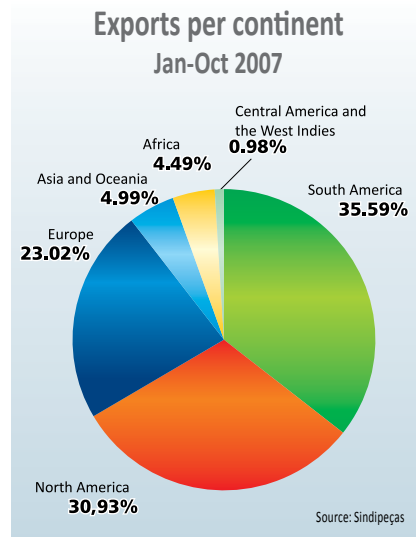
Around 470 companies today make up the Brazilian auto parts market. Together they have about 650 plants in Brazil

■

USA, 14.9%, Japan, 14.7%, and Argentina, 11.3%, following. In 2007 Brazil will import US\$ 9 billion worth of parts.

In 2006, 84.8% of the Brazilian autoparts segment's turnover came from totally or mainly foreign owned companies, and the remaining 15.2% from Brazilian-owned companies. These percentages, compared with 1994, the year when surveys began, have swapped positions significantly: 52.4% of sales made by Brazilian-owned companies, compared with 47.6% made by foreign-owned companies. The data shows, then, the increasing internationalization and globalization in the segment.

This is no different for foreign investments, that continues. In 1994, 48% of resources came from overseas. Twelve years later this had almost doubled, to 80.9%. The sources of investment remained the same: mainly multinationals, in order, from the USA, and Germany. In 2006, however, there was a reversal of positions and Germany took the lead.



Around 470 companies today make up the Brazilian autoparts market. Together they have about 650 plants spread around Brazil, thus: 17.6% in the city of São Paulo, 24.3% in São Paulo State, 14.3% in the Santo André, São Bernardo do Campo, São Caetano do Sul, and Diadema regions of São Paulo, and 15.1% in Greater São Paulo. The remaining 28.7% are spread around the States of Rio de Janeiro, Minas Gerais, Rio Grande do Sul, Santa Catarina, Paraná, Bahia, Pernambuco, Ceará and Amazonas.

Profile change

With the opening up of the market in the 1990s, imports benefited. Well-established Brazilian companies fell into foreign ownership, in very profitable deals. In this period the profile of the sector changed radically.

Foreign ownership became the norm. Systems companies sprang up, and Brazilian companies, in the main, became suppliers for large global groups. With a new structure the industry was rebuilt, modernized and today has international status, exporting to every continent.

From then on the auto parts industry began massive expansion. Average idle capacity, which has been 26% from 2001-2003, fell to 13% in 2004. Average profitability, which had been negative (1% in 2002), grew to 6% in 2005. Turnover, which had been in the US\$ 11 billion range in 2001-2002, more than tripled. Investments also leapt from US\$ 798 million in 2001 to US\$ 1.4 billion in 2005.



SPARES – The automotive spares market will grow 14.7% in 2007. Increased car sales will be the great lever for sustained growth over the coming years. In 2006, including manufacturers of autoparts, distributors, retail and replacement, turnover totaled R\$ 47.3 billion.

The vehicle repair segment in Brazil, which 2006 turned over R\$ 19.7 billion, is made up of 92,448 companies and creates 653,000 direct jobs, also enjoys the positive impact of record new car sales.

The large influx of new cars on the market drives all links in the automotive spares production chain: autoparts manufacturers, distributors, retailers and car repairers. As the fleet grows, there are more opportunities for the automotive spares sector. Studies show that the Brazilian fleet is now 25 million units.

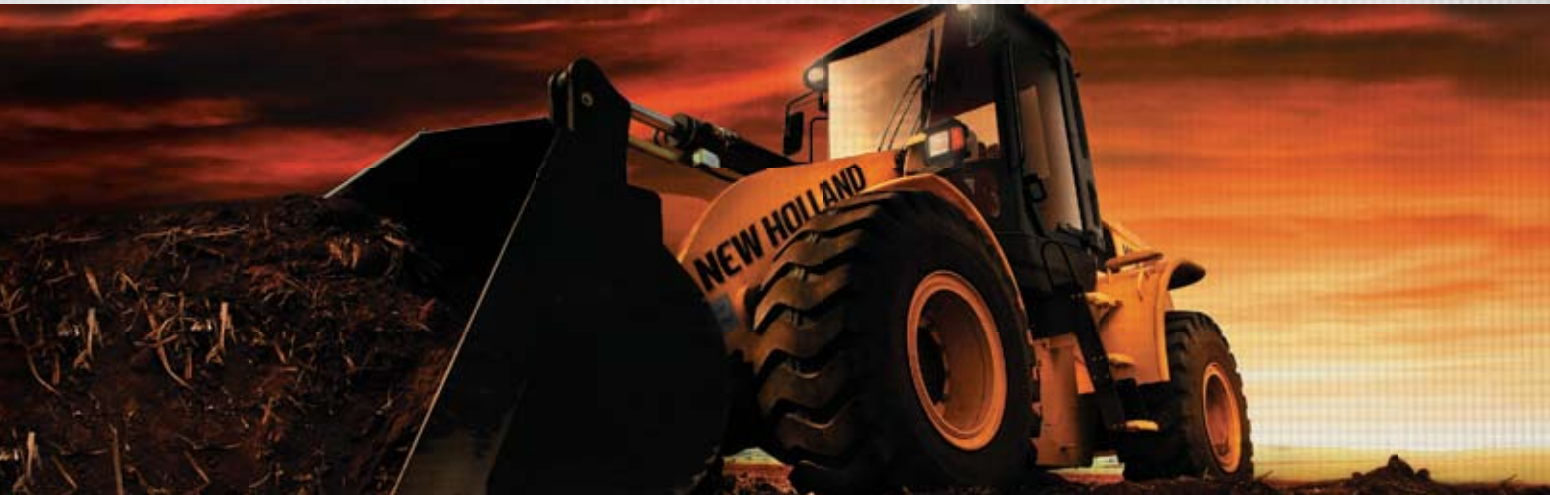
■



The most complete line of agricultural machinery in Brazil.
An expert on the success of the land worker.



Building the productive Brazil, while offering you
advanced technology, innovation and global force.



New Holland in agriculture, New Holland in construction.

CNH trademarks, Fiat group, doing more for the development of our country.



Autoparts manufacturers

3M Do Brasil Ltda.

Campinas/SP
Tel/Fax: 55 19 3838-6960/6887
www.3m.com

Products: Films for automotive protection and decoration, decorative graphics, automotive adhesive labels, emblems, acrylic foam tape for fixing auto parts, tapes with structural adhesives, structural adhesives, bodywork seals, blackout film, heat expanding materials.

3-RHO Interruptores Automotivos Ltda.

Brusque/SC
Tel/Fax: 55 47 3350-4848/4269
www.3rho.com.br

Products: Oil pressure switches, brake light switches, reverse light switches, pressure sensors.

AAM do Brasil

Araucária/PR
Tel/Fax: 55 41 2141-1098/1199
www.aam.com

Products: Manual transmission components, automatic transmission components, diesel pump components, catch plate, pump support, damper, brake and suspension components, differential box, chassis module, front and rear axles.

ABC Group do Brasil Ltda.

Araras/SP
Tel/Fax: 55 19 3543-3333/3542-0781
www.abcgroupinc.com

Products: Air and engine ducts, expansion and washing tanks, homocinetic CV joints, steering and shock absorbers, plastic injected automotive seats, plastic injected hoses.

ABC Sistemas e Módulos Ltda.

São Bernardo do Campo/SP
Tel/Fax: 55 11 4341-7172/4399-2695

Products: Front suspension modules.

A Friedberg do Brasil Indústria e Comércio Ltda.

Monte Mor/SP
Tel/Fax: 55 19 3879-9300/1995
www.friedberg.com.br

Products: Camplates, screws and nuts.

A Raymond Brasil Ltda.

Vinhedo/SP
Tel/Fax: 55 19 3836-6900/3836-6928
www.araymond.com.br

Products: Plastic and metal parts.

ABR Indústria e Comércio de Autopeças Ltda.

São Bernardo do Campo/SP
Tel/Fax: 55 11 4341.9555
www.abr.ind.br

Products: Seals, retainers, rings, rubber and metal parts.

Acesita S/A

São Paulo/SP
Tel/Fax: 55 11 3818-1958/6382
www.acesita.com.br

Products: Stainless steels, carbon steel alloys and silicon steels.

Açoservice Indústria e Comércio de Ferro e Aço Ltda.

Diadema/SP
Tel/Fax: 55 11 6884.5353

Products: Longitudinal, transversal, strip and blank cutting services. Trading of flat steels.

Açotécnica S.A. Indústria e Comércio

Jandira/SP
Tel/Fax: 55 11 4619-9555/4789-3319
www.acotecnica.com.br

Products: Rotors for compressors, parts for transmission boxes, parts for braking systems, shift lights, retainers, valve bodies, rocker arms and suspension support.

Actia do Brasil Indústria e Comércio Ltda.

Porto Alegre/RS
Tel/Fax: 55 51 3358-0200/3337-6081
www.actia.com.br

Products: Heating control, voltage converter, mechanical and electronic diagnosis, relay, audio systems, video systems, digital video recording system, multiplex systems and tachographs.

Acument Brasil Sistemas de Fixação S.A.

São Paulo/SP
Tel/Fax: 55 11 3837-4000/4123
www.acument.com

Products: Screws, special screws, extruded and cold molded parts, nuts and stud bolts.

Acumuladores Ajax Ltda.

Bauru/SP
Tel/Fax: 55 14 2106-3000
www.ajax.com.br

Products: Automobile and motorcycle batteries.

Acumuladores Moura S/A

Jaboatão dos Guararapes/Pernambuco
Tel/Fax: 55 81 2121-1600/1644
www.moura.com.br

Products: Automobile batteries, traction batteries, stationary batteries, nautical batteries, solar batteries.

Adere Indústria Serigráfica Ltda.

Caxias do Sul/RS
Tel/Fax: 55 54 3026-1055/9088

Products: Industrial stamps, decorative adhesives for vehicles, fleet decorations, promotional material such as banners and displays.

**Adesivos Lumar
Indústria e Comércio Ltda.**

Guarulhos/SP

Tel/Fax: 55 11 6431-9966

Products: Self-adhesive technical parts

Adler PTI Ltda.

Ibirité/MG

Tel/Fax: 55 31 2104-5400/3598-1744

www.adler.com.br

Products: Polyurethane bumpers, technical parts in polyurethane foam, sun visors.

**AESA – Automolas
Equipamentos Ltda.**

Cambé/PR

Tel/Fax: 55 43 2174-3000/3254-6014

Products: Semi-elliptical springs, clamps, pintles and lunette rings.

**Aethra Componentes
Automotivos Ltda.**

Betim/MG

Tel/Fax: 55 31 3045-4601/4607

www.aethra.com.br

Products: Engineering and simultaneous development services; CAD / CAE; prototypes; co-design; homologation tests; stamping mock-ups; large stamps; devices and welding and assembly lines; medium and large stamping; transfer stamping; complete cabs; bodywork sets and subsets; fuel tanks, rear axles, front suspension cross members, side protection bars, steel bumpers, aluminum roof racks, catalytic converter and exhaust heat deflectors, panel fixers and air bags.

Affinia Automotiva Ltda.

Osasco/SP

Tel/Fax: 55 11 3604-4455/3686-7055

www.affinia.com.br

Products: Radiator additives, shock absorbers and suspension, piston rings, trays, steering bars, water pumps, fuel pumps, oil pumps, electrical fuel pumps, rod bearings, bushings, steering boxes, cylinder liners, carburetors, universal joints, clutch cylinders, brake cylinders, master cylinders, steering columns, ring gears, rubber pads, differential spiders, wheel hubs, brake disks, axles, axle differentials, spring sets, water filters, air filters, fuel filters, oil filters, brake fluid, header joints, homocinetic sets, engine joints, brake pads, bearings, hoses, micro protective oil, gas springs, helicoidal springs, disk brake pads, pinions, suspension pivots, retainers, brake shoes, engine lining sealant, brake servos, brake drums, steering end plates, and suspension pull rods.

AFL do Brasil Ltda.

Itajubá/MG

Tel/Fax: 55 35 3629-2000/3623-7676

www.alcoa.com.br

Products: Electrical distribution systems for automobiles vehicles

Agrostahl S.A. Indústria e Comércio

Mairinque/SP

Tel/Fax: 55 11 4718-8080/8089

www.stahl.com.br

Products: Differential spiders and steering and transmission joints, universal joints, flanges, sleeves and forged and machined parts.

**Aisin do Brasil
Comércio e Indústria Ltda.**

Barueri/SP

Tel/Fax: 55 11 3201-5800/5824

Products: Hinges, latches for automobiles and door checks.

Aksys do Brasil Ltda.

São José dos Pinhais/PR

Tel/Fax: 55 41 2106-2300/2310

www.aksys.com.br

Products: Module assembly support.

Alcoa Alumínio S/A

Santo André/SP

Tel/Fax: 0800 159888/5511 3741-8300

www.alcoa.com.br

Products: Extruded aluminum profiles.

Allevard Molas do Brasil Ltda.

Mogi Mirim/SP

Tel/Fax: 55 19 3805-7950/3806-9316

www.alleward.rejna.com

Products: Stabilizing bars and helicoidal springs.

Alliedsignal Automotive Ltda.

Sorocaba/SP

Tel/Fax: 55 15 3235-5000/5082

www.garret.com.br

Products: Brake plates, brake pads.

Divisão Honeywell (Garret):

Guarulhos/SP

Tel/fax: 55 11 2167-3000/3042

Products: Turbo feeders

Alpha Galvano

Química Brasileira Ltda.

Caxias do Sul/RS

Tel/Fax: 55 5 3224-3033

www.alphagalvano.com.br

Products: Aluminum and zamac alloys, non-ferrous anodes, galvanic processes, picklers, thermoplastics, resales of chemical products.

Alpino Indústria Metalúrgica Ltda.

Jundiaí/SP

Tel/Fax: 55 11 4815-9100/4582-3043

www.alpino.com.br

Products: Automotive tubes exhaust tubes and oil tubing.

Alujet Industrial e Comercial Ltda.

Vinhedo/SP

Tel/Fax: 55 19 3846-7710/7756

www.binno.com.br

Products: Alloy wheels.

**Alusur do Brasil
Fundição em Alumínio Ltda.**

São José dos Pinhais/PR

Tel/Fax: 55 41 3381-2500/2517

www.alusur.com.br

Products: Engine supports, water and oil pumps, filter bodies, bearings, headers.

Amemiya Indústria Mecânica Ltda.

São Paulo/SP

Tel/Fax: 55 11 6962-0033/6919-4719

Products: Rocker arms, connections, forks, gear selectors and machined parts.

Ampri Indústria e Comércio Ltda.

Guarulhos/SP

Tel/Fax: 55 19 6422-4899/4899

www.ampri.com.br

Products: Steering boxes and columns.

Anroi Indústria e Comércio Ltda.

São Paulo/SP

55 11 6291-5000/4306

www.anroi.com.br

Products: Oil pumps, steering wheel fixing screws, chain tensors and relief valves.

Antocon Galvanoplastia Ltda.

Taboão da Serra/SP

Tel/Fax: 55 11 4701-1106/1358

Products: Hood rods, door latch rods, glass guide rail, antenna supports, starting pedals, axle bearing brackets, shoes, parts for Petrobras, locksmith parts, screws, nuts, parts for lamps, musical instruments, etc.

**Aplic Comércio e Indústria de
Autopeças Ltda.**

Barueri/SP

Tel/Fax: 55 11 4161-8866

www.aplicresolit.com.br

Products: Axles, valve commands, gears, distribution fiber gears, oil strainers and chain tensors.

**Arca Indústria e Comércio
de Retentores Ltda.**

Jaboticabal/SP

Tel/Fax: 55 16 3203-3859

www.arcaretentores.com.br

Products: Gaskets and retainers.

Arcelor Auto Brasil

São Paulo/SP

Tel/Fax: 55 11 3638-6800

www.arcelormittal.com

Products: Hot laminates, cold laminates and galvanized parts.

Armco do Brasil S.A.

São Paulo/SP

Tel/ Fax: 55 11 6343-2600/2838

www.armco.com.br

Products: Low carbon and high resistance steels, medium, high carbon and steel alloys, high carbon tempered, flat wire, stainless steels, fast steel, pre-coated steels, fine cold coils and fine hot coils, rolls, sheets and blanks.

**Arnaldo Pollone
Indústria e Comércio Ltda.**

São Bernardo do Campo/SP

Tel/Fax: 55 11 6842-2500/2526

www.arnaldopollone.com.br

Products: Screws and latches for vehicles.



It is said that a brand transcends its own meaning and becomes a style of life when it is transposed to the consumer's imagination. The public's imagination is heaven for any brand or product.

Bosch in the world today means much more than automotive parts and systems. The company is recognized globally for its inventive DNA, being the largest patent holder in the segment. A leader in new automotive technologies, the Bosch Groups invests about 7% of its annual worldwide turnover in research and development. This means that in 2006 \square 3.3 billion was invested and 3,058 patent requests were made. Worldwide, over 23,000 professionals (scientists, engineers, and technicians) are working in search of new technologies.

The company invests heavily not just in R&D, but also in the concrete application of new concepts, systems and products. The objective is always to make available technologies for consumers that provide greater security and comfort for vehicle passengers, as well as improving economy and performance, reducing emissions, and contributing to conservation of the environment. This being the case, all the products and systems offered by Bosch follow a worldwide 3-S program 3-S – "sicher" (safe), "sauber" (non-polluting) and "sparsam" (economical).

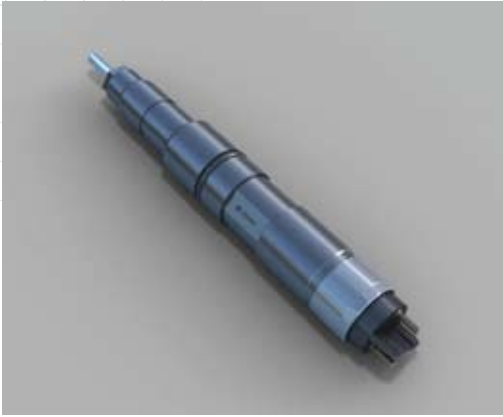
The Bosch Group is today the largest auto parts company in the world, having registered a turnover in 2006 of \square 27.2 billion in this segment alone. Bosch also operates in another two large business areas (consumer goods, and industrial construction and technology), registering a total turnover of \square 43.7 billion last year.

In Brazil, the main company of the group is Robert Bosch America Latina. It has four manufacturing units in the States of São Paulo, Paraná and Bahia; it employs about 11,500 people and has three Worldwide Competence Centers developing automotive products. The best known is the Worldwide Competence Center for the Development and Application of Conventional and Oxygenated Fuel Systems at the Gasoline Systems Division. Located in Campinas (SP), it is the cradle of pioneering technologies in the use of fuel ethanol, such as the ethanol injection system (in the 1980s) and the Flex Fuel system (1990s).

Capable of automatically adapting engine management to work with any proportion of ethanol resulting from the mixture of fuels the user puts in the tank, Flex Fuel technology is today a success in Brazil and has been gaining market overseas as well – the system has been exported to Sweden and France – one of its main advantages being reduced CO₂ emissions.

Engineers are currently working with the specialists at the Worldwide Competence Center for Small Engines (also in Campinas). The aim is to evolve Flex Fuel technology in a new concept: New Generation Flex.

New Generation Flex integrates the energy management system (starter motor, generator, Start Stop system, the High Efficiency Motor –HEM and the Global Blower Module) with the vehicle's electronic injection system. In addition, it adds the latest fuel supply technologies (XI@rate) and the innovative cold starting system (Flex Start). The optimized operation of all these resources allows a significant reduction in energy consumption, fuel use and pollutant emissions.



In Brazil this division is the Competence Center for Unit Pump development, as well the development of the injector of the Common Rail System 1st generation. Furthermore, it has a manufacturing unit in the city of Curitiba (PR) and produces injection systems that furnish more than 70% of the Diesel vehicles in Brazil. Additionally, part of the production is exported to Germany, the USA and Asia.

In recent years this unit has significantly invested in the production of components for the new electronic injection systems necessary to comply with both Brazilian gas emission laws and EPA 2007.

A highly competitive, qualified manufacturing base, the Curitiba unit produces over one million Common Rail System injectors for light vehicles per year -- most of these injectors are exported to Europe. This factory also produces the Common Rail System injector for commercial vehicles (CRI-N), as well the Unit Pump (UP), the traditional mechanical pumps (Distributor Pumps and In-line Pumps), nozzles, nozzle holder assemblies and components.

Energy and Body Systems

Previously united in a single business division, Energy and Body Systems was split into two new units: Starter Motors and Generators, and Electrical Drives.

The Starter Motors and Generators division has a global partnership with vehicle and motor manufacturers for the efficient generation of energy in an environmentally friendly form. A world leader in supplying energy for automobiles, it has a manufacturing unit in Campinas (SP), producing and supplying high quality products and systems to an international standard.

The Electrical Drives division develops and manufactures mechatronic components and systems for onboard applications. Focused on benefiting the client with competitively priced quality, it supplies the Starter System, Thermal System, and Windshield Wiping System markets.



Chassis Systems Brakes and Control

Being certified by various Brazilian and international bodies, the both units develop the most complete range of brake products for the domestic and international market, supplying the leading assemblers.

Recently, the Campinas (SP) plant had R\$ 25 million invested in it, for the installation of the first Antilock Braking System (ABS) production line in Latin America. The recently opened line supplies the demand from Mercosul assemblers, replacing imports of the product.

The engineers in the Brazilian units are part of a global network with laboratories in Europe, America and Asia and have developed specific applications for the local market, with the same worldwide Bosch quality in products and services.

Besides high technology, Chassis Systems Control has a Sale and Marketing team that is dedicated to promoting the ABS market amongst the country's assemblers. This team brings to Brazil the experience of a global Bosch Marketing team in the development of the vehicle safety market with systems such as ABS, TCS and ESP®.



BOSCH

Robert Bosch Ltda

Rodovia Anhanguera, Km 98 – Vila Boa Vista
13065-900 – Campinas –SP

Tel./Fax 55 (19) 2103.1954
www.bosch.com.br/contato

Aro Estamparia e Ferramentaria Mecânica Ltda.

São Paulo/SP

Tel/Fax: 55 11 3872-3288/3174

www.arostamping.com.br

Products: stamped parts, supports, locks, handles, buffers, camplates, welded sets, clamps and clamping pieces.**Arpol Tintas Tecnologia Ltda.**

Osasco/SP

Tel/Fax: 55 11 3602-7999/7964

www.arpol.com.br

Products: Enamel and polyurethane primer, acrylic lacquer, nitro cellulose lacquer, soft, enamel oven, primers, solvents, varnishes, powdered electrostatic paint.**Arteb Faróis e Lanternas S/A**

Gravataí/RS

Tel/Fax: 55 51 3430-1264/1417/1419

www.arteb.com.br

Products: Headlights, lamps, brake-lights, lamp covers, auto parts for heavy lines.**ArvinMeritor do Brasil Sistemas Automotivos Ltda.**

Divisão CVS

Osasco/SP

Tel/Fax: 55 11 3684-6611

www.arvinmeritor.com.br

Products: Complete front and rear axles for trucks (light, medium, and heavy), buses and minibuses; suspension systems for commercial vehicle cabs.

Divisão LVS

Limeira/SP

Tel/Fax: 55 19 3404-2100

www.arvinmeritor.com.br

Products: Steel wheels for light vehicles and systems for access and doors.

Divisão Aftermarket

Osasco/SP

Tel: 0800 555530 – Fax: 55 11 3684 6929

www.arvinmeritor.com.br

Products: Components for front and rear axles, differentials, wheels, differential spiders for universal joints, brake components, brake bands, bearings, bushing kit.**Asbrasil S/A**

São Bernardo do Campo/SP

Tel/Fax: 55 11 4366-3000/4367-1900

www.asbrasil.com.br

Products: Handbrake levers, light, doorstops, hinges, latches for hoods, latches, flanges, door checks, stamped parts, pedals, brake pad plates, brake shoes.**ASK do Brasil Ltda.**

Sete Lagoas/MG

Tel/Fax: 55 31 2106-3003/3009

www.askgroup.it

Products: Speakers, tweeters, box subwoofers, antenna amplifiers and antenna cables.**Aspol Indústria e Comércio Ltda.**

Itaquaquecetuba/SP

Tel/Fax: 55 11 4645-0550

Products: Nuts and cold stamping fixing elements.**Associated Spring do Brasil Ltda.**

Campinas/SP

Tel/Fax: 55 19 3725-1000/1001

www.asbg.com.br

Products: Technical springs, springs for engine valves, shaped technical springs and valves for compressors.**Atelier Mecânico Morcego Ltda.**

Guarulhos/SP

Tel/Fax: 55 11 6487-3255/3250

www.amm.com.br

Products: Ignition cylinders, latches for vehicles, ignition and starting switches, light switches, handles for vehicles, fuel tank caps and locks.**Atemis Sistema de Segurança Ltda.**

São Paulo/SP

Tel/Fax: 55 11 5545-6600

www.atemis.com.br

Products: Doorstops, cylinders with keys for vehicles, hinges, handles for vehicles, manual window lifters, fuel tank caps and scoop latches.**Atlas Copco Tools**

São Paulo/SP

Tel/Fax: 55 11 5564-9100/5563-5606

Products: Manual pneumatic tools, manual electrical tools, multiple tightening systems and devices, tools for removing material (sanders, grinders, wrenches), air accessories, engines, hoists and trolleys.**Aunde Brasil S.A.**

Poá/SP

Tel/Fax: 55 11 4634-7100/7213

www.aunde.com.br

Products: Seat covers, fabrics and fabrics covered in foam and polyurethane.**Autocam Do Brasil Usinagem Ltda.**

Campinas/SP

Tel/Fax: 55 19 2101-9700/9705

www.autocam.com.br

Products: Camplates, valve seats, diffusers, butterfly axles, axles, pistons, gears, machined parts, pinions, spring pins and valves.**Autoforjas Ltda.**

Sete Lagoas/MG

Tel/Fax: 55 31 2106-8600/8656

Products: Forged and machined parts, gears, axles, rotor hubs, cylindrical ring gears, supports, flanges, wheel hubs, axle points, bearing rings, gears, trailer hitches, steering link.**Autoliv do Brasil Ltda.**

Taubaté/SP

Tel/Fax: 55 11 3627-1070/1069

www.autoliv.com

Products: Steering wheels, airbags and seatbelts.**Autometal S/A**

Diadema/SP

Tel/Fax: 55 11 4070-8200/8222

www.autometal.com.br

Products: Gear levers, baggage racks, suspension arms, caps, catch plate, heat deflectors, emblems, wheel disks, forks for clutches, forks, gear selectors, front grilles, frames, frames for windshields, stamped parts, flatbed protectors and brake drums.**Autonet Klippan Brasil Ltda.**

Guarulhos/SP

Tel/Fax: 55 11 6421-5450/6425-1565

Products: Technical fabrics and nets for the automotive industry**Autotex****Indústria e Comércio Têxtil Ltda.**

Arujá/SP

Tel/Fax: 55 11 2187-7200/4655-4755

www.autotex.com.br

Products: Automotive fabrics**AVS Brasil Getoflex Ltda.**

Guarulhos/SP

Tel/Fax: 55 11 2147-5762/5893

www.trelleborg.com.br

Products: Rubber items, automotive hoses, antivibration torsion, rubber bushings, rubber mountings.**Bantec Recaro**

São Paulo/SP

Tel/Fax: 55 11 3079-7922/6102

www.bantec.com.br

Products: Leather seats, sports seats and special seats.**Barile Indústria e Comércio****de Artefatos de Metais Ltda.**

São Caetano do Sul/SP

Tel/Fax: 55 11 4228-1400/1330

Products: Stamped parts.**Basf S/A - Divisão Tintas e Vernizes**

São Bernardo do Campo/SP

Tel/Fax: 55 11 4347-1122/1155

www.basf.com.br

Products: Automobile paint (original), paint for plastic and metal auto parts, automotive repainting.**Basf Poliuretanos Ltda.**

Mauá/SP

Tel/Fax: 55 11 4542-7200

www.basf.com.br

Products: Micro-cellular polyurethane elastomers**Basso Componentes****Automotivos Ltda.**

Perus/SP

Tel/Fax: 55 11 3917-1266/3915-8300

www.bassocomp.com.br

Products: Intake elbows, axles, gears, flanges and machined parts.

Bastien Indústria Metalúrgica Ltda.

São Paulo/SP
Tel/Fax: 55 11 5515-4100/4124
www.bastien.com.br

Products: Pump casings.

Bayer S/A

São Paulo/SP
Tel/Fax: 55 11 5694-5166/5548-0482
www.bayer.com.br

Products: Polyurethanes.

Behr Brasil Ltda.

Arujá/SP
Tel/Fax: 55 11 4652-0300/4655-2380
www.behrgroup.com

Products: Air and water radiators, intercoolers, refrigeration blocks, cooling modules, compensation tanks, viscofans, condensators, air conditioning units, heaters and evaporators.

Benteler Automotive Mercosul

Campinas/SP
Tel/Fax: 55 19 2122-3254/3257
www.benteler.com.br

Products: Welded sets, exhaust parts, stamped parts, tubing for application in engines, welded axles, side impact bars, seat structures, instrument panel support, reinforcement for bumpers, conformation of tubes in a hydroforming system, control arms, assembly of front and rear modules, assembly of wheels and suspension corners, engine dressing.

Betenheuser Metal Técnica Ltda.

Colombo/PR
Tel/Fax: 55 41 3621-4224

Products: Precision machining and stamping.

Big Rodas Indústria e Comércio Ltda.

São Paulo/SP
Tel/Fax: 55 11 6525-8099/8091
www.bigrodas.com.br

Products: Wheels and alloy wheels.

Bins S/A – Indústria de Artefatos de Borracha

São Leopoldo/RS
Tel/Fax: 55 51 3511-5000/5050
www.bins.com.br

Products: Diaphragms for air brakes, sparkplug covers, ball-joint covers for suspension and steering terminals, exhaust caps, rubber mountings, bellows, bushings and seals.

Bleistahl Brasil Metalurgia S.A.

Cachoeirinha/RS
Tel/Fax: 55 51 3470-2455/3455
www.bleistahl.com.br

Products: Valve seat rings and valve guides.

Bodycote Brasimet Comércio e Indústria S/A

São Paulo/SP
Tel/Fax: 55 11 2168-6600/5525-6622
www.brasimet.com.br

Products: Thermal treatment services for metals, brazing, ktl painting, pvd coating, and chemical and metallographic analysis.

Bolhoff Service Center Ltda.

Jundiaí/SP
Tel/Fax: 55 11 4585-2568/2536
www.bolhoff.com.br

Products: Special inserts, nuts, washers, automotive fixing elements.

Bontaz Centre do Brasil Indústria e Comércio de Autopeças Ltda.

Pindamonhangaba/SP
Tel/Fax: 55 12 3643-2997/3104
Products: Oil injector valves (valves for piston refrigeration in engines).

Borealis Brasil S/A

Itatiba/SP
Tel/Fax: 55 11 4524-9100/9101
www.borealisgroup.com

Products: Polypropylene compounds

Borgwarner Brasil Ltda.

Campinas/SP
Tel/Fax: 55 19 3787-5700/5701
www.turbo driven.com

Products: Turbo feeders for diesel engines, ventilators and viscous clutches for cooling engines.

Borlem Alumínio S.A.

Santo André/SP
Tel/Fax: 55 11 4998-8000/8034
www.hayes-lemmerz.com

Products: Alloy wheels

Borlem S/A

Empreendimentos Industriais
Guarulhos/SP
Tel/Fax: 55 11 6421-1700/1759
www.hayes-lemmerz.com

Products: Steel wheels for automobiles, utility vehicles, trucks and buses and wheel rims.

Borrachas e Plásticos Artbor Indústria Comércio Ltda.

Joinville/SC
Tel/Fax: 55 47 3467-5675/7175

Products: Stamped and injected parts, conventional rubber and thermoplastic rubber profiles.

Borrachas Tipler Ltda.

São Leopoldo/RS
Tel/Fax: 55 51 3568.2222/2221
www.tipler.com.br

Products: Products for retreading, remolding of tires and compounds for third parties.

Bortali & Bortali Importação Exportação e Representação Ltda.

São Paulo/SP
Tel/Fax: 55 11 6591-2721/6161-6317

Products: Rubber sealing rings, silicon connections, rubber pads, rubber joints, sensors and rubber mats.

Bosal do Brasil Ltda.

São Paulo/SP
Tel/Fax: 55 11 5522-9955/5686-6369
www.bosal.com

Products: Mechanical jacks, wheel

wrenches, screwdrivers and Philips screwdrivers, manual tools, toolkits.

BMP Proar Ltda.

Campo Bom/RS
Tel/Fax: 55 51 3038 5151
www.proar.net

Products: Pneumatic and electrical systems for automation, doors, baggage racks, toilets and heating.

Brandl do Brasil Ltda.

Campina Grande do Sul/PR
Tel/Fax: 55 41 2106-2500/2525

Products: Manufacture of aggregates, welding and subframes, medium and light stamped parts, tools.

Branil Juntas Indústria e Comércio Ltda.

Itaquaquecetuba/SP
Tel/Fax: 55 11 4648-6800/6201
www.braniljuntas.com.br

Products: Engine joints and rubber parts.

Brascabos Componentes Elétricos e Eletrônicos Ltda.

Rio Claro/SP
Tel/Fax: 55 19 3522-5122

Products: Harnesses and electronic plates for cooling, for cleaning systems, for injection systems, for climate-control systems, for engines, window lifters, for fuel systems and for lighting systems.

Brasfreios Industrial de Minas Ltda.

Itaquaquecetuba/SP
Tel./Fax 55 11 4648-7999/7966
www.brasbrakes.com.br

Products: Brake pads, disk brake pads and clutch linings.

Brasimet Comércio e Indústria S/A

São Paulo/SP
Tel/Fax: 55 11 5525-6600/6622
www.brasimet.com.br

Products: Thermal metal treatment systems, brazing, ktl painting, pvd coating and chemical and metallographic analysis.

Brasmeck Juntas Automotivas Indústria e Comércio Ltda.

Diadema/SP
Tel./Fax: 55 11 4055-1111/5522
www.brasmeck.com.br

Products: Valve cap joints, rubber joints, case joints in rubber and engine joints.

Bras-Mol Indústria e Comércio de Molas Ltda.

Itaquaquecetuba/SP
Tel/Fax: 55 11 4648-2611/2485
www.brasmol.com.br

Products: Technical springs and stamped parts.

Brassinter S.A. Indústria e Comércio

São Paulo/SP
Tel/Fax: 55 11 5696-4800/4878
www.brassinter.com.br

Products: Sintered parts.

Plascar



Plascar operates in the automotive sector producing and trading systems, parts, and services for the internal and external finishing, and lighting systems for vehicles. The company uses state-of-the-art technology in developing and manufacturing its entire product line, from conventional plastic injection, gas assisted, multiple injections, extrusion of plates and sheets, thermoforming, vacuum forming, foaming, Woodstock, Sheet Molding Compound, and stamping.

A leading company in the sector, Plascar is a national and international reference point in its field. It serves customers in Mercosul and exports to Mexico, Canada, the USA, Australia and Europe.

Amongst its main products are bumpers, instrument panels, air outlets, cup holders, door panels, plastic parts painting, package trays, carpets, window lifters, lighting systems (tail lamps and headlamps).

Permali do Brasil Indústria e Comércio Ltda. – a wholly-owned subsidiary of International Automotive Components Group Brazil, LLC, based in Delaware, USA – is the majority stockholder in Plascar (PLAS 3), with 56.52% of the total capital.

Plascar has branches in Varginha/MG, Betim/MG, Botucatu/SP and Jundiá/SP, where its headquarters is also based. Its outstanding history of success began in 1963, with the establishment of the company Oscar S/A Indústria de Artefatos de Borracha which in 1973 would change its name to Oscar S/A Indústria e Comércio and would be dedicated to the automotive market. Today the company is ISO/TS 16949 and ISO 14001 certified at its manufacturing units.

In a pioneering initiative in Brazil in 1990 the company invested about US\$ 21 million in the large plastic parts painting and automobile steering wheels unit, thus consolidating its definitive position in the segment. In 1992 Plascar S.A. Indústria e Comércio was established.

One year later, the company opened its thermoformed unit, equipped with the latest generation technology. In 1994 Plascar achieved a very important certification named ISO 9001 and 9002, and in the following year launched the just in time concept in Brazil, manufacturing and assembling instrument panel systems at its branch in Betim/MG, set up to better serve Fiat.

In 1997 and 1998 the Jundiá and Varginha plants achieved the most demanding and complete certification in the automobile sector, QS 9000, followed by various other high sought-after certifications in the market. Also in 1998 the company name was changed to Plascar Indústria de Componentes Plásticos Ltda., which has remained until today.

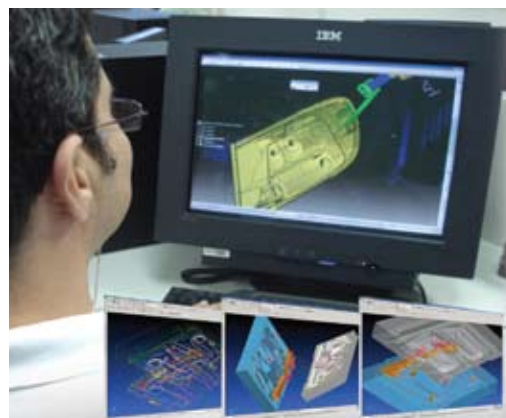
Since 2006 the company has been included in the guide, "The 150 Best Companies for You to Work For," published by the magazines Exame and Você S.A and, in 2007, was considered to be the 23rd Best Company to Work For in Brazil, according to the Great Place To Work Institute Brazil and the magazine Época. In addition, it was included in the ranking of the 500 Biggest and Best Company in the auto-parts sector, by Isto é Dinheiro Magazine, having the best financial management in the sector, and the best company in innovation and quality.



Plascar manufactures and trades internal and external automotive finishing parts and pieces. It uses Woodstock technology (wood flour and polypropylene) in the manufacture of door panels and package trays. Its main products are bumpers, instrument panels, air outlets, cup holders, door panels, painted plastic parts, sun visors, package trays, carpets, window lifters, column switches, lighting systems (lamps) and even painting of cellular telephone handsets. It is a market leader, serving customers in Mercosul and exporting to Mexico, Canada, the USA, Australia and Europe. It operates in the original parts market, also serving the spares market for lighting and indicating systems.

Clients and Methods

With a portfolio of clients that includes some of the most important names in the market, such as Volkswagen, General Motors do Brasil, Fiat, Ford, Toyota, Mercedes Benz do Brasil, Mitsubishi, PSA (Peugeot Citroën), Hyundai and Scania, Plascar leads the supply of internal and external finishing parts for the automotive industry. Plascar also stands out as being the only supplier of automotive parts with completely integrated operations to develop projects with its clients. Allying vast professional experience to a varied portfolio of products and processes, the company offers manufactured products fully accorded with the desires and needs of customers. All the development stages are carried out internally, since designing, product engineering, material engineering, tool engineering until the final product manufacture, by a team focused on optimizing solutions. In this way, besides satisfying the expectations of its customers, the company makes available innovative and intelligent solutions that make their methods more competitive and efficient.



Technology

Plascar benefits from the most modern technology in the development of raw materials, products and processes. To provide its clients with systems and products focused on socio-environmental sustainability the company has invested in technology and products that benefit the whole productive chain. One example is the use of natural fibers to replace petrochemical polymers, which reduces CO2 emissions. Plascar also uses renewable resources, such as recycled plastic fibers.

Plascar's laboratories are perfectly equipped to meet the diverse requirements of its clients. It's deep-seated commitment to quality, involving all the company's employees, is fully recognized in the market. One of the Plascar's differentials is its constant investment in researching, which allows it to offer significant innovations to the market. This practice is part of its pillars that sustain all the work done by Plascar: Continuous Improvement, Respect to People, and Intelligent Solutions.

Plascar

Intelligent solutions for the automotive industry

LAC Group

Plascar Indústria de Componentes Plásticos Ltda.

Avenida Amélia Latorre, nº 01 – Retiro
13211-000 – Jundiáí – SP – Brazil

Tel. 55 11 2152 5187 (Communications and Marketing Management) • Fax 55 11 2152 5137
www.plascargroup.com • informacoes@plascargroup.com

Brembo do Brasil Ltda.

Betim/MG
Tel/fax: 55 31 3539-8500/8511
www.brembo.it

Products: Brake disks and brake drums.

**Bremser Wayser
Indústria e Comércio Ltda.**

São Paulo/SP
Tel/Fax: 55 11 5841-4090
www.wayser.com.br

Products: Cylinders for clutches, brake cylinders, flanges, brake system repair, gear and servo gear repair.

**Bridgestone Firestone
do Brasil Ltda.**

Santo André/SP
Tel/Fax: 55 11 4433-1568/1074
www.firestone.com.br

Products: Tires for automobiles, vans, trucks and buses, agricultural and off-road equipment.

**Borflex Indústria e Comércio de
Artefatos de Borracha Ltda.**

Diadema/SP
Tel/Fax: 55 11 4061-6200/6209
www.borflex.ind.br

Products: Engine, gear and bushing mounting.

Bosal – Gerobrás Ltda.

São Paulo/SP
Tel/Fax: 55 11 5522-9955/5686-6369

Products: Systems for changing tires, mechanical jacks, wheel wrenches, screwdriver, manual tools, tools kits.

Brose Do Brasil Ltda.

São José dos Pinhais/PR
Tel/Fax: 55 41 3381-2000/2094
www.brose.de

Products: Window lifters and seat regulators

Budai Indústria e Comércio Ltda.

Jandira/SP
Tel/Fax: 55 11 4772-7400/4789-3267
www.budai.ind.br

Products: Stamped parts.

**Butuem Indústria
de Autopeças Ltda.**

São Paulo/SP
Tel/Fax: 55 11 6236-0770/0790

Products: Axles for rocker arms, bushing for suspension, piston pins and front axle pins

C.A.R. Indústria e Comércio Ltda.

São Paulo/SP
Tel/Fax: 55 11 5523-0699/5685-1402

Products: Camplates.

Cabel Industrial Ltda.

Santana do Parnaíba/SP
Tel/Fax: 55 11 2149-1645/1636
www.cabel.com.br

Products: Caps, trailer hitches, hoses, bumpers, roll bars

Cablettra do Brasil Ltda.

Matozinhos/MG
Tel/Fax: 55 31 3712-9900/9966
www.cablettra.com.br

Products: Electric harnesses.

Caribea Indústria Madeireira Ltda.

São Manuel/SP
Tel/Fax: 55 14 3841-3589/3388

Products: MDF sheets, technical parts in wood, padding.

**Caribor Tecnologia da Borracha
Ltda.**

Joinville/SC
Tel/Fax: 55 47 3431-5100/5199
www.caribor.com.br

Products: Brake line, steering, ignition connectors, cable conductors, joints, rings, bushings, trim, rod bearings, covers, buffers, fuse boxes, rubber mountings, rubber parts.

Casco do Brasil Ltda.

Indaiatuba/SP
Tel/Fax: 55 19 3885-6100/3935-8444
www.cascoglobal.com

Products: Cigarette lighters, injected plastic parts and plugs.

Case Indústria Metalúrgica Ltda.

São Paulo/SP
Tel/fax: 55 11 2273-3966/6915-8311
www.case.ind.br

Products: Stamped and injected parts.

Castrol Brasil Ltda.

Inhaúma/RJ
Tel/Fax: 55 21 2598-7222
www.castrol.com

Products: Transmission oils, engine oils, brake and automatic transmission fluid, industrial greases and lubricants.

Celplac Indústria e Comércio Ltda.

Guarapuava/PR
Tel/Fax: 55 42 3624-1236

Products: Naval plywood, floors for bodywork.

Centauro Indústria e Comércio Ltda.

Guarulhos/SP
Tel/Fax: 55 11 2147-2477/2400
www.centaurobrasil.com.br

Products: bumper cores, floors, hoods, rear sides, front and rear panels, bumpers, fenders, stamped parts and grille supports.

**Cerâmica e Velas de Ignição
NGK do Brasil Ltda.**

São Paulo/SP
Tel/Fax: 55 11 3053-9500/9542
www.ngkntk.com.br

Products: Spark plugs, ignition cables, oxygen sensors (lambda probe), detonation sensors and suppressive terminals.

**CGE – Sociedade Fabricadora
de Peças Plásticas Ltda.**

Mauá/SP
Tel/Fax 55 11 4512-6600/6609

Products: Engine covers, air intake case, linings, exhaust valves, door handles, accelerator pedals, compensation tanks, security straps, steering column covers, consoles, caps, wheel disks, body color sides/doors.

Chemetal do Brasil Ltda.

Diadema/SP
Tel/Fax: 55 11 4066-8800/1682

Products: Chemical products for treatment of metal surfaces.

**Chem-Trend Indústria e Comércio
de Produtos Químicos Ltda.**

Valinhos/SP
Tel/Fax: 55 19 3881-8220/8222

Products: Demolding agents and lubricants.

Chevron Brasil Ltda.

Rio de Janeiro/RJ
Tel/Fax: 55 21 2271-9411
www.texaco.com.br

Products: Lubricant oils, greases, fluids and fuels.

Chris Cintos de Segurança Ltda.

São Paulo/SP
Tel/Fax: 55 11 5683-4700/4711
www.chriscintos.com.br

Products: Seatbelts, belts for seatbelts, stamped parts, cast parts in aluminum, seat locks, devices to regulate seatbelt height.

**Ciamet Comércio e Indústria
de Artefatos de Metal Ltda.**

São Paulo/SP
Tel/Fax: 55 11 2296-9111/9278
www.ciamet.com.br

Products: Bushings in steel and bronze, special camplates and with backs in steel and bronze, butterflies for electronic injection, stamped parts.

**Cindumel Industrial de Metais
e Laminados Ltda.**

Guarulhos/SP
Tel/Fax: 55 11 6423-5055/5040/5050

Products: Semi-elliptical springs for light, semi-heavy and heavy vehicles, helicoidal springs for vehicles.

**Cinpal – Companhia Industrial
de Peças para Automóveis**

Taboão da Serra/SP
Tel/Fax: 55 11 4701-4111/6266

Products: Forged, cast, and machined parts, differential boxes, differential spiders, satellite boxes, planetary gear sets, gear and transmission components, brake axles, valve command axles, gears, axle sleeves, steering arms, steering wheels and engine racks.

**CIP – Companhia
Industrial de Peças**

Guarulhos/SP
Tel/Fax: 55 11 6464-3333/6440-8320
www.cip-gears.com.br

Products: Axles and gears.

Click Automotiva Industrial Ltda.

Valinhos/SP

Tel/Fax: 55 19 3881-8400/1875

www.clickautomotiva.com.br

Products: Fuel caps, oil caps, expansion tank caps, cold start tank caps, radiator caps, rollover valves, by-pass valves, quick connectors / adapters, fuel lines - nylon tubes and ribber hoses, accessories for fuel lines, grilles for plastic speakers, motorbike parts, flanges for sender units, filters, connections for fuel tubing, locks for motorbikes.

Cliptech Indústria e Comércio Ltda.

Itupeva/SP

Tel/Fax: 55 11 4591-0915/0953

Products: Electromechanical and electronic relays for all automotive applications, electronic modules, alarms, sirens, antennas, roof lights, automotive plugs and connectors.

Cofran Indústria de Autopeças Ltda.

São Caetano do Sul/SP

Tel/Fax: 55 11 4229-3211/3262

www.cofran.com.br

Products: Mirrors, indicators, rear lights, lenses and warning triangles.

Colauto Adesivos e Massas Ltda.

São Paulo/SP

Tel/Fax: 55 11 6946-4011/9049

Products: Sealing compounds, anti-noise sealing compounds, structural sealers, pre-formed rubber technical parts, caulking compounds, plastic coatings.

Comau do Brasil Indústria e Comércio Ltda.

Betim/MG

Tel/Fax: 55 31 2123-7220

Products: Industrial maintenance services, automated assembly lines, machining, refurbishing of machinery and equipment, industrial automation, projects and construction of devices and welding lines, robotics – robots from 3 to 800 kg.

Compact Indústria de Produtos Termodinâmicos Ltda.

Caxias do Sul/RS

Tel/Fax: 55 54 3025-3838/3222-6516

Products: 12/24 volt refrigerators and ovens, 24 volt microwaves.

Companhia Brasileira de Alumínio

São Paulo/SP

Tel/Fax: 55 11 3224-7000/3331-4162

www.cia-brasileira-aluminio.com.br

Products: Profiles, leaves, cast products, wires and cables, sheets.

Companhia Brasileira de Petróleo Ipiranga

Rio de Janeiro/RJ

Tel/Fax: 55 21 2574-5256/2569-4886

www.ipiranga.com.br

Products: Fuels and lubricants.

Companhia Siderúrgica Nacional

São Paulo/SP

Tel/Fax: 55 11 3049-7100/7223

Products: Steel products.**Companhia Siderúrgica Paulista – Cosipa**

São Paulo/SP

Tel/Fax: 55 11 5070-8800/8863

Products: Laminates, plates, thick blank sheets, cold laminate blanks.

Continental do Brasil Produtos Automotivos Ltda.

Tires Division:

São Paulo/SP

Tel/Fax: 55 11 4583-6161/6166

Products: Tires for automobiles, pick-ups (including off-road), vans, buses and trucks.

Brake System Division:

Várzea Paulista/SP

Tel/Fax: 55 11 4596 8000/8185

www.conti-online.com

Products: Front and rear diskbrakes, rear drum brakes, servo-brakes, braking valves, brakehoses, master cylinders, wheel cylinders, brake disks, brake fluid, disk brake pads.

Contitech Division:

São Paulo/SP

Tel/Fax: 55 11 5070-1100/1104

Products: Automotive chains, automotive rubber mountings, bushings, gaskets, sealing rings, plugs, camplates, diaphragms, circuit valves for power steering and air conditioning.

Cooper Standard**Automotive Brasil Sealing Ltda.**

Varginha/MG

Tel/Fax: 55 35 3219-4000/4038

www.coopertire.com

Products: Rubber and PVC trim for doors, windows, hoods, doors, bags and finishing, gutters and wheel flanges and disks.

Copam – Componentes de Papelão e Madeira Ltda.

Ribeirão Pires/SP

Tel/Fax: 55 11 6808-7383/7382

www.compam.com.br

Products: Deflectors, arm rests, molded and modeled foams, lever handles, parts in Duratex and cardboard, package shelves, sun visors, internal finishing, molded finishing, and flat finishing.

Coplac Do Brasil Ltda.

Itu/SP

Tel/Fax: 55 11 4024-0503/3137

Products: Thermal and acoustic isolation.

Copo Fehrer Brasil Indústria de Poliuretano Ltda.

Quatro Barras/PR

Tel/Fax: 55 41 2106-3117/3101

www.cfb.com.br

Products: Molded automotive foams.

Copo Thierry do Brasil Ltda.

São Bernardo do Campo/SP

Tel/Fax: 55 11 3163-2700/2749

Products: Fabrics.**Corneta Ltda.**

Osasco/SP

Tel/Fax: 55 11 3651-7900/7951

www.corneta.com.br

Products: Light raw or machined precision forged parts, professional manual tools, gear levers, levers, rocker arms, flanges, forks, gear selectors.

Coverttech Acessórios Ltda.

Joinville/SC

Tel/Fax: 55 47 3025-5656/3026-5347

Products: Covers for pick-ups.**Cross Hueller Indústria de Máquinas Ltda.**

Diadema/SP

Tel/Fax: 55 11 4075-7445/7452

www.crosshueller.com.br

Products: Machining, vertical turning, special machines, retrofitting and services.

CRW Indústria e Comércio de Plásticos Ltda.

Guarulhos/SP

55 11 2147-5500/6421-7440

www.crw.com.br

Products: Fuel gauges.**Cummins Brasil Ltda.**

Guarulhos/SP

Tel/Fax: 55 11 6465-0182/6412-0126

www.cummins.com.br

Products: Diesel engines for trucks, pick-ups, buses, stationary applications, construction machinery, agricultural equipment, machinery for mining and sea applications, cylinder blocks for diesel engines, engine blocks, cylinder heads for diesel engines, powertrains.

Dambroz S.A.**Indústria Mecânica Metal**

Caxias do Sul/RS

Tel/Fax: 55 54 3229-1777/3218-4300

Products: Semi-trailers for automobiles transportation, boards for trucks and chassis transportation, body for automobiles transportation, carry all and special projects, cast and machine parts for the automotive sector.

Dana Indústrias Ltda.

Units:

Gravatá/RS

Tel/Fax: 55 51 3489-3000/3624

Diadema/SP

Tel/Fax: 55 11 4075-5700/5875

Osasco/SP

Tel/Fax: 55 11 3604-4455/3868-3489

São Paulo/SP

Tel/Fax: 55 11 3611-1422

Sorocaba/SP

Tel/Fax: 55 15 3238-6000/6022

Campo Largo/PR

Tel/Fax: 55 41 104-8800

Joint Ventures:

ABC Systems Modulares
(Dana/TRW/Krupp)
São Paulo/ São Paulo
Tel/Fax: 55 11 6331-2122/6334-2122,
S.M. Systems Modulares
(Dana/TRW)
Taubaté/SP
Tel/Fax: 55 12 3609-9408
www.dana.com.br

Products: universal joints and components axles (light, heavy, agricultural and off-road), differentials and non-four wheel axles (light, heavy, agricultural and off-road), transference boxes, automatic transmissions for off-road machines, steering columns, backrest camplates, suspension joints, buffers, bushings, bearings, hoses, rubber mountings, heat and sound deflectors (TAPS, Thermal Acoustical Protective Shields), air ducts, engine joints (asbestos free, thermoplastic. MLS and metal-rubber), spars, chassis frames, modules suspension, structural modular systems, thermoplastic valves caps, steering bars, reaction bars, steering terminals, pull rods, shifting, water pumps piston rings, oil and fuel rod bearings.

Danval Indústria de Equipamentos Ltda.

São Paulo/SP
Tel/Fax: 55 11 6684-7000

Products: Equipment for buses, agricultural machines and trucks, acoustic and visual indicators.

Dayco do Brasil Indústria e Comércio Ltda.

Juatuba/MG
Tel/Fax: 55 31 3539-8824/8820
www.dayco.com.br

Products: Hydraulic steering and air conditioning tubing, multi ventilated belt, dumper, tensioner.

Dayco Power Transmission Ltda.

São Paulo/SP
Tel/Fax: 55 11 3146-4770/3262-4577
www.mark-iv.com

Products: Pulleys

Daytec Ltda.

Juatuba/MG
Tel/Fax: 55 31 3539-8800/8820
www.markivauto.com

Products: Nylon tubes for brake, fuel and gear systems, fuel and gear, fuel steam absorber, fuel module set, transmission belts, hoses for air-conditioning, pulleys, canister valves

Decar Autopeças Ltda.

São Paulo/SP
Tel/Fax: 55 11 2101-0300/0367
www.decar.com.br

Products: braces for exhausts, oil pumps, homocinetic joint duster, engine joints, rear lights and scoop.

Degussa Brasil Ltda.

São Paulo/SP
Tel/Fax: 55 11 3146-4150/4148
Products: Polyimide resin 12, polyimide resin 6, 12, elastomeric polyimide resin, polyimide resin 6.3 transparent, PBT resin, powdered polyimide resin 12, powdered copolyimide resin, polyetherketone, modified polyphenylene resin, acrylic resin, high impact modified acrylic resin, acrylic sheets and films, plasticizers for PVC, carbon black - silica and silicates, organosilanes, chemical agents and additives, adhesion promoters, coagents of reticulation, methacrylate resins - methacrylate monomers: saturated polyester resin: thermoplastic methacrylate resin: special adhesion-promoting resins: stereospecific polybutadiene oil: polyester polyurethane - polyurethanes systems, hardeners, accelerators, initiators, ipdi based diisocyanates (monomer, trimer and blocked): aliphatic diamines: organic peroxides - benzoin and tbbp peroxide, pigments- carbon black pigment: Prussian blue: titanium anatase dioxide, additives- hydrophilic or hydrophobic pyrogenic silicas: precipitated and pyrogenic silicas: acrylic polymers, polycarboxylic urethanes and acids: polysiloxane polyester copolymers: surfactants: homo and copolymer acrylics: organofunctional silane: polyethylene was, polypropylene modified EVAs and wax: pyrogenic aluminum oxide, solvents - isophorone: tetrahydronaphtalene: decahydronaphtalene: trimethylcyclohexanon.

Delga Indústria e Comércio Ltda.

Diadema/SP
Tel/Fax: 55 11 4053-4200/4218
www.delga.com.br

Products: small, medium and big sized stamped parts, cabs for Volkswagen trucks, fuel tanks pipe socket, oil carter, oil deflector, nuts for axle, supports, headers covers, radiator covers, fuel tanks, radiator blower.

Delphi Automotive Systems do Brasil Ltda.

São Caetano do Sul/SP
Tel/Fax: 55 11 4234-9500/9415
www.delphiauto.com

Units: Piracicaba/SP, Jambéiro/SP, Gravataí/RS, Cotia/SP, Espírito Santo do Pinhal/SP, Itabirito/MG, Jaguaruina/SP, São José dos Pinhais/PR, Jacutinga/MG, Paraisópolis /MG, Porto Alegre/RS, Buenos Aires/Argentina, Tierra del Fuego/Argentina

Technological Centers: São Caetano do Sul/SP, Piracicaba/SP

Technological Application Centers: Cotia/SP, Jambéiro/SP, Jaguaruina/SP, Porto Alegre/RS

Products: Ventilation modules, heat and air conditioning, full engine cooling systems, radiators, condensators, compressors, core heaters, evaporators,

accumulators, oil coolers, drying filters, instruments panels, modules airbags, steering wheels, finishing, doors components and accessories, audio systems (radios; cassettes; CD players and CD changers), immobilizers, alarms, navigation systems, anti-collision systems, security systems, entertainment systems for backseat passengers (roof/seat), electronic injection controlling modules (ECM), electronic injection systems, full engine management systems, MultiFuel® full engine management systems, fuel tunnels, fuel filters, oil filters, fuel injection valves, electric canister valves, electronic acceleration valves, engine speed sensors, air and water temperature, linear valves for gases recirculation (gas, alcohol and diesel), trolling valve, pressure sensors, detonation sensors, oil sensors, oxygen sensors, throttles plate sensors, hydraulic tappet, pressure regulators, oil coolers, bi-directional air sender unit, fuel pumps, ignition coils, electric steering systems, manual and hydraulic steering, steering, hydraulic pumps, steering columns, fixed and adjustable, intermediary axles, full semi-axles, homocinetic sets, steering bars, fuel air systems, ignition systems, boost/electrical vehicles advanced systems, exhaust gas treatment system, fuel and evaporative emission management systems, catalytic converter, sensors and solenoids, valve control systems, hydraulic brake systems (conventional and MTB), antiblocking brakes system, traction control modulator, master cylinders, servo brakes, wheels integrated bearings, joints, front-back suspension modules, control arms, energy and power and signal distribution systems, electric harnesses, ignition cables, pressure and temperature integrates sensors, switch sets, connection systems, electric and electronic stations, cockpit assembling, connectors, terminals, turn signal switches, switches, diesel injection pumps, diesel electronic unit injection (EUI).

Delphi Diesel Systems do Brasil Ltda.

Cotia/SP
Tel/Fax: 55 11 4615-8500/4616-9791
www.delphidiesel.com.br

Products: injection nozzle, injection pumps, oil filter elements, oil filters, full fuel and oil filters and injector.

Delphia Products Elétricos Ltda.

Diadema/SP
Tel/Fax: 55 11 4067-2100/3340
www.delphia.com.br

Product: Ignition cables, terminals for ignition cables.

Denso do Brasil Ltda.

Curitiba/PR
Tel/Fax: 55 41 2141-4300/4500
www.denso.com.br

Products: Air conditioning system, compressors, Air conditioning box, tubes, hoses, condensator, drying filter, heat and air circulation system for automobiles



Basso Componentes Automotivos is a 100% Brazilian-owned company, founded in 1961. ISO: TS 16949:2002 certified since 2004, its mission has been to supply machined cast or forged products, using innovative technology in processes and management, creating value for clients.

Thanks to its experience and strength accumulated in over four decades, Basso has achieved excellence in its operations, allowing it to serve highly demanding companies in terms of quality and technology. This success has been possible through investment in technology, the hiring of trained professionals, the quality of its products, the efficiency of its processes, and its focus on client service.

Focus – Thanks to the efficiency of its processes, product quality, continued improvement, and excellence in client service, Basso has become a reference in machining in the Brazilian automotive sector. It currently invests 85% of its profits in new technologies, making its processes and plant as modern as anything in the world. With new, state-of-the-art equipment, the company's products have a high degree of reliability and the company encourages and take part in the constant professional improvement of its staff.

Continuing the investment and growth plan begun in 2006, in 2008 Basso is to open an industrial plant dedicated to cold box iron casting

in order to provide the domestic and export market with complete and highly competitive solutions.

Basso is concerned about maintaining specialized, multifunctional teams able to identify client needs, propose creative solutions and satisfy their expectations as regards delivery dates and quality. This policy won the company two awards as the best machining supplier, in 2003 (DANA BRASIL) and 2005 (HONEYWELL TURBO TECHNOLOGIES BRASIL).

Clients – Quality, personalized service, production efficiency and speed of delivery are principles that guarantee the winning and maintenance of clients in Brazil and abroad, such as Honeywell (USA), Daimler Chrysler, Dana, GM, Honda, Honeywell (Brazil), Peugeot, ZF, Borg Warner, and others.

Products – Over the years, Basso has specialized in machining components for turbos, such as central casing and turbine casing. However, its product range is wide and not limited. It can be said that its know-how is focused on highly complex cast and machined non-symmetrical parts, such as admission manifolds, brake drums, hoses for water or oil pumps, shift levers, and components for the two-wheel industry.



Basso Componentes Automotivos Ltda.

Estrada do Jaraguá, 4111 – Via Anhanguera KM 25,5 – Perus
- São Paulo – SP – Brazil

Tel. 55 11 3915 8300 • Fax 55 11 3917 1266

www.bassocomp.com.br • maria.renata@bassocomp.com.br • faleconosco@bassocomp.com.br

and trucks, air conditioning systems for buses, condensators and evaporators.

Denso Máquinas Rotantes do Brasil Ltda.

Betim/MG
Tel/Fax: 55 31 2191-1400/1401
Products: Alternators, front and back wipers, electrical ventilators.

Denso Systems Térmicos do Brasil Ltda.

Betim/MG
Tel/Fax: 55 31 3527-7700/7800
www.globaldenso.com
Products: Air conditioning system components and air conditioning boxes, refrigeration modules, engines, radiators, condensators, evaporators, air intake case control panels, car panel front ends and assemblies.

Denso Industrial da Amazônia Ltda.

Manaus/Amazonas
Tel/Fax: 55 92 2121-4200/4201
Products: Air conditioning for buses, motorcycle generator set, voltage regulator for motorcycles, and ignition device for motorcycles.

Detroit Plásticos e Metais Ltda.

Diadema/SP
Tel/Fax: 55 11 4360-6700/4075-1717
www.detroit.ind.br

Products: Connections, carbon steel connections, stainless steel connections, brass connections, fast couplings, nylon automotive tubes, brass relief valves for air brake, retention valves for air brake. stainless steel and brass ball valves

DHB Components Automotivos S.A.

Porto Alegre/RS
Tel/Fax: 55 51 2121-1311/1334
www.dhb.com.br

Products: Hydraulic steering systems, manual steering systems, high-performance steering boxes for EPS system, electric hydraulic steering system, hydraulic steering boxes – nautical line, hydraulic steering pumps, tanks, axle joints, steering terminals, hoses and hydraulic valve.

D-Helix Indústria e Comércio Ltda.

São Paulo/SP
Tel/Fax: 55 11 3723-5555/3726-3968
www.imce.com.br

Products: synchronizing rings, selectors gear forks and sliding plate.

Dimetic Indústria Metalúrgica Ltda.

São Paulo/SP
Tel/Fax: 55 11 5563-5388/6386
www.dimetic.com.br

Products: Connections and machined parts.

Dini Têxtil Indústria e Comércio Ltda.

Ferraz de Vasconcelos/SP
Tel/Fax: 55 11 6856-5656/5655
Products: Automotive fabrics

DNP Indústria e Navegação Ltda.

Araras/SP
Tel/Fax: 55 19 3541-7111/7612
www.torquerc.com.br

Products: Welded sets and stamped parts.

Dormer Tools S/A

São Paulo/SP
Tel/Fax: 55 11 5660-3117/5667-5883
Products: cutting rotating tools for machining, drill, plug, router, reaming shells and underreamer.

Dow Corning do Brasil Ltda.

São Paulo/SP
Tel/Fax: 55 11 3759-4300/3758-5727
Products: Silicone

DPF Autopeças Ltda.

Cajamar/SP
Tel/Fax: 55 11 4446-4100/4110/4120
www.dpfautopecas.com.br
Products: Plastic, chrome plated, painted and steel core wire bumpers.

Drivewat Indústria Brasileira de Autopeças Ltda.

São Paulo/SP
Tel/Fax: 55 11 6331-1788/6546
www.driveway.com.br
Products: Steering bars, suspension pivots and steering terminals.

Dupont do Brasil S.A.

Guarulhos/SP
Tel/Fax: 55 11 6465-8133/6412-8219
www.dupont.com.br

Products: Water and solvent based original automotive paint, (topcoats, primers, electrophoresis), paint for plastic and metal auto parts, repainting and industry.

Dura Automotive Systems do Brasil Ltda.

Rio Grande da Serra/SP
Tel/Fax: 55 11 4827-2000/4820-1313
www.durauto.com.br

Products: Transmission control, pedals, mechanical jacks, wheels riser, control cables, brake cables, brake lever, gear lever, stamped parts assembly, impact rod, hinges, hood latches, sliding windows, door checks, window lifters.

Durametal S.A.

Maracanaú/CE
Tel/Fax: 55 85 4008-0400/3297-1212
www.durametal.com.br

Products: Wheel hubs, brake drums.

Duroline S.A.

Caxias do Sul/RS
Tel/Fax: 55 54 2101-5000/5009
www.duroline.com.br
Products: Brake pads.

Eaton Ltda.

Valinhos/SP
Tel/Fax: 55 19 3881-9588/9595
www.eaton.com.br

Fluid Power Division

Guarulhos/SP
Tel/Fax: 55 11 6465-8822/6480-1883
Products: Hydraulic pumps, hydrostatic transmissions, hydraulic engines, hydraulic valves, hydrostatic steering, hydraulic cylinders, power units, manifold blocks, engines and power steering components, hydraulic hoses, connections, fast coupling, adaptors, accessories and hoses for air conditioning and power steering.

Electrical Energy Control/ Distribution Component Division

Rio de Janeiro/RJ
Tel/Fax: 0800 2821305
Products: Command buttons and signals, stack lights, rotating switches, sirens and alarms, Low Tension (LT) and Medium Tension (MT) contractors, sensors, limit switches, man-machine interfaces, programmable logical controllers, magnetic keys, LT and MT circuit breakers, circuit breakers in molded boxes, relays for monitoring and control, distribution centers, LT and MT panels, engine control centers and electro centers.

Energy Protection Systems

São Paulo/SP
Tel/Fax: 55 11 3616-8500/8578
Products: No-brake s, direct current supplies, rectifiers, software for energy management, remote monitoring and services.

Intake and Outlet Valves

São José Dos Campos/SP
Tel/Fax: 55 12 3935-3397/3931-2478
Products: Intake and outlet valves for internal combustion engines for passenger cars, commercial vehicles, trucks, buses and stationary engines.

Transmission Division

Valinhos/SP
Tel/Fax: 55 19 3881-9444/9650
Products: Mechanical transmissions for pick-ups, minibuses, buses, light, medium, and heavy trucks and spare parts; electrical sockets, oil for gearboxes and chains for trucks and pick-ups and products for tires and services.

Clutch Division

Mogi Mirim/SP
Tel/Fax: 55 19 3805-8800/8823
Products: Clutches for medium and heavy trucks and buses.

Component and Kit Division

Mogi Mirim/SP
Tel/Fax: 55 19 3805-8800/8823
Products: Components for mechanical transmissions passenger vehicles and medium trucks.

Agricultural Transmissions and Components

Caxias do Sul/RS
Tel/Fax: 55 54 2108-6300/6509
Products: Transmissions and components for the agricultural market.

Echlin do Brasil Indústria e Comércio Ltda.

Diadema/SP
Tel/Fax: 55 11 4075-5700/5665
www.dana.com.br

Benteler Automotive



The Benteler Group has a 131-year history and global turnover of €5.6 billion (2006). It is one of the twenty-five largest worldwide suppliers to the automotive industry, employing 22,000 people in thirty-four countries on the five continents. It has 150 plants, offices and warehouses worldwide. It invests 3% to 4% of its revenue in research and development, recently increasing investment by 50%.

Divisions

- **Benteler Automotive** – chassis systems, structures, exhaust systems, engine applications, and engineering/development services
- **Benteler Steel/Tube** – automotive, industrial and energy sector tubes.
- **Benteler Distribution** – operates in logistics in the automotive, mechanical engineering, process engineering, steel and metal construction, furniture and leisure sectors.

Benteler Automotive's turnover in Mercosul in 2006 was R\$ 1 billion. It employs 1,800 people in four plants in Brazil and one in Argentina.

Plants

- **Benteler Estamparia Automotiva** (Campinas - São Paulo - Brazil). Beginning of operations: September 1996; Constructed area: 14,100 m²; **Equipment**: presses (from 630 to 1,600 tons), cutting presses, robotic transference systems, spot welding; **Main products**: stamped parts for vehicle structures and bodywork, welded assemblies.

- **Benteler Componentes Automotivos** (Campinas - São Paulo - Brazil). Beginning of operations: February 1997; Constructed area: 19,560 m²; **Equipment**: hydraulic presses, hydroforming press, manual and robotic welding lines (MIG, MAG and Magnetarc), robotic axle assembly line, KTL painting line, hot stamping line, tube bending machines, dynamic test benches, metrology room, CAD and CAM systems; **Main products**: bumper structures, dashboard support, side-impact protection bars, front and rear axles, axle and suspension module assembly, metal seat structures.
- **Benteler Componentes Automotivos** – Ford Assembly Plant (Camaçari - Bahia - Brazil). Beginning of operations: April 2002; Constructed area: 11,000 m²; Suppliers at the plant: 31 (26 local and 5 international); **Main products**: 5 assembly lines, namely engine dressing and pony-pack.
- **Benteler Sistemas Automotivos** – PSA Peugeot Citroën Assembly Plant (Porto Real - Rio de Janeiro - Brazil). Beginning of operations: February 2001; Constructed area: 6,087 m²; **Main products**: rear axle, suspension modules and wheel assembly line;
- **Benteler-RB** (Valentin Alsina – Buenos Aires – Argentina). Beginning of operations: April 1996; Constructed area: 6,500 m²; **Equipment**: hydraulic presses, manual and robotic welding lines (MIG, MAG), automated axle assembly line; **Main products**: front suspension structures, front and rear axle modules, metal seat structures, bumpers, control arms;

BENTELER



Automotive

Benteler Automotive Mercosul

Avenida Marginal Sul, 802 – Distrito Industrial
13054-750 – Campinas – SP – Brazil

Tel. 55 19 2122 3254 • Fax 55 19 2122 3257
www.benteler.com • Informe@benteler.com.br

Products: Water pumps, fuel pumps, oil pumps, carburetor butterflies, carburetors, butterfly bodies, fuel filters, brake hoses, power steering hoses, water pump repairs, electro-pneumatic valves.

Eco Indústria e Comércio de Autopeças Ltda.

Jundiaí/SP
Tel/Fax: 55 11 4581-7818/4582-8107
www.ecopads.com.br

Products: Disk brake pads, brake shoes.

ECS do Brasil Metalúrgica E Participações Ltda.

Cachoeirinha/RS
Tel/Fax: 55 51 2136-1233/1234
www.ecs-global.com.br

Products: Carbon brushes for electric motors, brush mountings.

Edag do Brasil Ltda.

São Bernardo do Campo/SP
Tel/Fax: 55 11 4173-9600/9608

Products: Development design and engineering of products, injection and stamping tools, models and prototypes, automated lines and cells for bodywork welding, industrial automation.

Edscha do Brasil Ltda.

Sorocaba/SP
Tel/Fax: 55 15 2101-8800/8877
www.edscha.com

Products: Door hinges, hood hinges, trunk hinges, door limiters, handbrake levers and pedals.

Efrari Indústria e Comércio Importação e Exportação de Autopeças Ltda.

São Bernardo do Campo/SP
Tel/Fax: 55 11 4178-1766/1194
www.efrari.com.br

Products: Cables for accelerators, chokes, hoods, gears, throttles, brakes, engines, seats, and speedometers.

Electrocast Indústria e Comércio Ltda.

Nova Odessa/SP
Tel/Fax: 55 19 3466-2771/2383
www.electrocast.com.br

Products: Exhaust catch plates, axle valve commands and engine supports.

Eletromecânica Dyna S/A

Guarulhos/SP
Tel/Fax: 55 11 6423-2100/6421-2689
www.dyna.com.br

Products: Blades, arms and windshield wiping mechanisms, rocker arms for windshield wiper motors.

Élice Indústria E Comércio Ltda.

Salto/SP
Tel/Fax: 55 11 4602-8400/8406
www.elice.com.br

Products: Electric pumps for windshield wipers, windshield wiper sets, door buffers, micromotors, tanks for power steering oil and electrical locks for doors.

Elismol Indústria Metalúrgica Ltda.

Diadema/SP
Tel/Fax: 55 11 4075-7566/7560
www.elismol.com.br

Products: Elastic rings, technical springs, pins and clamping pieces.

Elingklinger do Brasil Ltda.

Piracicaba/SP
Tel/Fax: 55 19 3124-9000/9001
www.elringklinger.com.br

Products: Header joints, special joints, heat deflector sheets.

Embrapla Empresa Brasileira de Plásticos S.A.

Araguari/SC
Tel/Fax: 55 47 3465-0055/0015
www.embrapla.com.br

Products: Plastic injected parts.

Encotec Eletrônica Indústria e Comercio Ltda.

São Paulo/SP
Tel/Fax: 55 11 5011-6855
Products: Onboard computers, digital odometers and speedometers.

Enerbrax Acumuladores Ltda.

Bauru/SP
Tel/Fax: 55 14 2107-4000
www.enerbrax.com.br

Products: Automobile batteries.

Enertec do Brasil Ltda.

Sorocaba/SP
Tel/Fax: 55 15 2102-2700/2737
www.enertec.com.br

Products: Automobile and motorcycle batteries.

Engelhard do Brasil Indústria e Comércio Ltda.

São Caetano do Sul/SP
Tel/Fax: 55 11 4227-2733/4528

Products: Automotive catalytic converters.

Engrecon S.A.

Santana do Parnaíba/SP
Tel/Fax: 55 11 4154-9000/9022
www.engrecon.com.br
Products: Satellite boxes, rings and pinions, differential spiders for universal joints, gears, transmissions gears, planetary gear sets, satellite gears, semi-axles.

Engretecnica Indústria e Comércio Ltda.

Carapicuíba/SP
Tel 55 11 4186-5444/1063
www.engretecnica.com.br
Products: Torsion bars, stabilizer bars, axles, gears, stabilizers for trucks and semi-axles.

EPD – Indústria e Comércio de Produtos de Engenharia Ltda.

Barueri/SP
Tel: 0800 0111572
www.goodyearrep.com.br

Products: Automotive chains and pneumatic springs.

Ergom do Brasil Ltda.

Itaúna/MG
Tel/Fax: 55 37 3243-4400/4200
www.ergom.com.br

Products: Fuel supply systems, fuel tanks, plastic blown fuel tanks, consoles, panels, injected parts, extruded and blown parts, multifunctional valves, unidirectional valves, flux valves, anti-reflux valves, air diffusers.

Estamparia e Spring Espanara Ltda.

Itupeva/SP
Tel/Fax: 55 11 4591-8300/1616
www.expandra.com.br

Products: Technical springs and stamped parts.

Fabaraço Indústria de Arames de Molas Ltda.

Igaratá/SP
Tel/Fax: 55 11 4658-8800/8801
www.fabaraco.com.br

Products: Clamps and technical springs.

Fabraço Indústria e Comércio Ltda.

Osasco/SP
Tel/Fax: 55 11 3686-4010/1728
www.fabraco.com.br

Products: Bimetal bushings, steering knuckle embushing, steering knuckle pins, piston pins and valves tappets.

Fábrica Boechat Ltda.

Itaperuna/RJ
Tel/Fax: 55 22 3826-9200/9213
www.boechat.com.br

Products: Air brakes, adjusting levers, brake shoes, regular and spring-brake brake boxes, expanding axles, mechanic riser.

Fábrica de Grampos Aço Ltda.

Guarulhos/SP
Tel/Fax: 55 11 6462-1813/1814
www.clampsaco.com.br

Products: Brackets, elastic rings, pressure camplates, flat, dented or curved camplates, clamp, fixation clamps, clamps forheadlamp frames, control panels forair conditioning, stamped parts, injected plastics parts, machined parts, nuts and clamping pieces.

Fábrica de Máquinas e Equipamentos Fameq Ltda.

São Paulo/SP
Tel/Fax: 55 11 3831-0299
www.fameq.com.br

Products: stamped and machined parts.

Facobras Indústria e Comércio Ltda.

Barueri/SP
Tel/Fax: 55 11 4161-4554/3287
www.facobras.com.br

Products: Ignition and starting switches, switches, brush holders and solenoids.

Fagor Ederlan Brasileira Ltda.

Extrema/MG
Tel/Fax: 55 35 3435-8200/8248



Brose do Brasil is the leading supplier of window regulators for the Brazilian automotive market. The company, which entered Brazil in 1997, bringing with it 100 years of family-run tradition, took leadership of the segment in 2005, thus demonstrating its perfect adaptation to the cultural diversity of Brazil.

With a presence on the main international markets, Brose makes intelligent systems for automotive doors and seats and is a pioneer in the introduction of Modular Door Systems and Electronic Seat Adjustment Systems. Through the excellence of its services, its name has become a worldwide reference point in the sector, constantly raising the production quality through use of the most advanced technology.

Brose's work is guided by long-term actions and based on the reliability and transparency that have always permeated its values of integrity and honesty. Within this philosophy, dignity and respect are essentials in relationships with commercial partners and collaborators. Amongst its clients are the major players on the market: GM, Volkswagen, Ford, Fiat, Toyota, Mercedes-Benz, Honda, PSA Peugeot Citroën, Lear Corporation, Faurecia, Keiper, and Johnson Controls.

Given its important industrial position in Brazil, Brose could not leave aside social responsibility. In partnership with the City Hall in São José dos Pinhais/PR, it has developed important projects to benefit the local population, alongside essential environmental conservation initiatives:

- The **Junior Guard Project** aids in the socio-educational development of the company's apprentices, taking in themes linked to citizenship and professional training.
- The **Cyro Pelizzari Human Promotion Centers I and II** run professional courses to give the best opportunities on the labor market to those taking part, and hold socio-cultural events along with the community.
- The **Corpo São Dance Company** seeks to respect the artistic expression of young talented people from disadvantaged communities, developing social, cultural and educational values that the experience of dance is capable of providing whilst they improve their physical, intellectual and moral facets.
- The **University Support Fund** gives chosen members of the Brose do Brasil Employees Association financial support to study at university for the first time. In this way they can develop their personal and organizational skills in accordance with the priorities and needs of personal education established by the company.
- In the environmental area, the **Brose Green project** was established to make the staff and their families aware of alternatives, changing paradigms and promoting changes that improve the quality of their lives. This is the company's policy, defending guided growth and sustainable development.

brose
Technik für Automobile

Brose do Brasil Ltda

Avenida Sul, 151 (BR 376 km628/629)
83183-000 – São José dos Pinhais – PR – Brazil

Tel. 55 41 3381 2000 • Fax 55 41 3381 2096
www.brose.com • curitiba@brose.com

www.fagorbrasileira.com.br
Products: Shell and machined axle sleeves, calipers, calipers supports, brakes supports, differential box, housing.

Fanavid – Fábrica Nacional de Vidros de Segurança Ltda.

Guarulhos/SP
 Tel/Fax: 55 11 2177-9800/9801
 www.fanavid.com.br

Products: Tempered glass, laminates and armored for all automotive segments, such as: autos, trucks, buses, trains and subways, yachts and speedboats, agricultural machines and machines for civil construction

Fania – Fábrica Nacional de Instrumentos Para Veículos Ltda.

São Paulo/SP
 Tel/Fax: 55 11 2131-6655/5851-9954
 www.fania.com.br

Products: Cables for accelerators, chokes, hot air, hoods, controls, clutches, throttles, brakes, engine shutdowns, transmissions, speedometers and tachometers.

Fanuc Robotics do Brasil Ltda.

São Paulo/SP
 Tel/Fax: 55 11 3619-0599/0577

Products: Industrial robots, parts, engineering and services.

Faparmas Torneados de Precisão Ltda.

Diadema/SP
 Tel/Fax: 55 11 4072-2077/1553
 www.faparmas.com.br

Products: Bushings, connections, axles, special screws, machined parts, pins and studs bolts.

Faróis Vinco Indústria e Comércio Ltda.

São Paulo/SP
 Tel/Fax: 55 11 6521-2585
 www.faroisvinco.com.br

Products: main and auxiliary headlights, panel and rear lights, and rotary indicators

Faurecia Automotive do Brasil Ltda.

São José dos Pinhais/PR Unit

Tel/Fax: 55 41 4009-8700/8769
 www.faurecia.com

Pindamonhangaba/SP Unit

Tel/Fax: 55 12 3644-4200/4201

São Bernardo do Campo/SP Unit

Tel/Fax: 55 11 2139-1222/4396-6276

Dias D'Ávila/BA Unit

Tel/Fax: 55 71 3625-7900/7730

Quatro Barras/PR Unit

Tel/Fax: 55 41 4009-8000
 55 41 4009-8011
 55 41 3672-1560

Products: doors panels, instruments panels, modules doors, front blocks, bumpers, injected plastic parts, package holder, full exhausts systems, steering column, wheel house, full seats, metallic structures, rails.

Federal-Mogul do Brasil Ltda.

Araras/SP
 Tel/Fax: 55 19 3543-5555/3541-4332
 www.federal-mogul.com.br

Products: Piston rings rod bearings, bushings, cylinder liners, heat deflectors, axlevalve commands, header joints, engine joints, synthesized parts, pistons for gas engines, retainers.

Federal-Mogul Electrical do Brasil Ltda.

Diadema/SP
 Tel/Fax: 55 11 4070-6100/6181
 www.federal-mogul.com.br

Products: Brake lights, rod bearings, heat deflectors, auxiliary headlights, main headlights, steering indicator lights, rear lights, wipers, disk brake pads, mechanical abrasion protection.

Feeder Industrial Ltda.

São Paulo/SP
 Tel: 55 11 6955-5477
 www.springsfeeder.com.br

Products: Technical springs.

Ferrosider Components Ltda.

Betim/MG
 Tel/Fax: 55 31 3597-7934/0322
 www.ferrosider.com.br

Products: Welded sets, stamped parts and automotive tubes.

Festo Automação Ltda.

São Paulo/SP
 Tel/Fax: 55 11 5013-1800/1868

Products: Cylinders, actuators, sliding blocks, valves, air treatment units, valves terminals, sensors, logical programming controllers, connections, coupling mouth, tubes, hoses, manipulation systems, servo-positioning, special elements, Products for process industry.

Fiamm Latin America Componentes Automobilísticos Ltda.

São Bernardo do Campo/SP
 Tel/Fax: 55 11 3737-6100/6116
 www.fiamm.com.br

Products: Horns.

Fibam Companhia Industrial

São Bernardo do Campo – SP
 Tel/Fax: 55 11 2139-5300/4343-4030
 www.fibam.com.br

Products: Screws, nuts and flat, dented and curved camplates.

Fibra-Tech Reciclagem Técnica Ltda.

Porto Feliz/SP
 Tel/Fax: 55 15 3261-7600/3262-6002

Products: Felt pad and natural fibers.

Ficosa do Brasil Ltda.

Barueri/SP
 Tel/Fax: 55 11 4619-8700/4619-8701
 www.ficosa.com

Products: Handbrake levers, hoods cables, brake cables and rearview mirrors

Filoauto Indústria e Comércio Ltda.

Indaiatuba/SP
 Tel/Fax: 55 19 3885-8800/8810
 www.filoauto.com.br

Products: Welded sets, door sides, bumpers and fenders.

Filparts Filtrose Peças Ltda.

Guarulhos/SP
 Tel/Fax: 55 11 2145-6900/6929
 www.filparts.com.br

Products: Air, fuel, oil and oil fuel filters.

FL Brasil Ltda.

Contagem/MG
 Tel/Fax: 55 31 3399-9000/9210
 www.flbrasil.com.br

Products: Automotive oils, industrial oils, radiator and brake fluids, machining greases and oils.

Fleetguard Nelson Brasil Ltda.

Guarulhos/SP
 Tel/Fax: 55 11 6462-8200/6480-2290
 www.fleetguard.com

Products: Air filters, oil filters, water/fuel separator filter, water filters, fuel filters, hydraulic filter, cooling system cleaning and additive fluids, intake and exhaust system for diesel engines.

Flexfab South America Ltda.

São Bernardo do Campo/SP
 Tel/Fax: 55 11 4393-0274/0290

Products: Silicone hoses and ducts for intercoolers, radiators, neoprene, fluorsilicone, fluorocarbon, prime elastomers.

Forjafrio Indústria de Peças Ltda.

Mauá/SP
 Tel/Fax: 55 11 4547-6700/6706
 www.forjafrio.com.br

Products: Bearing rings, piston pins, etc.

Forjas Brasileiras S/A Indústria Metalúrgica

Queimados/RJ
 Tel/Fax: 55 21 2139-0600/0601
 www.forjas.com.br

Products: Connection rods/forengines, tractor conveyors links, diesel pump body, homocinetic sets tailpipes, triple-joint parts, differential spiders, inner races, axlespinions, ring gears, tree axles, gears

Formcar do Brasil Systems Automotivos Ltda.

São Paulo/SP
 Tel/Fax: 55 11 2272-2994

Products: Acoustic heat insulating, polyurethane molded parts

Formtap Indústria e Comércio S/A

Diadema/SP
 Tel/Fax: 55 11 4070-7000/4071-3898
 www.formtap.com.br

Filial MG: Betim/MG

Tel.: 55 31 3591-1300/2079

Products: floor carpet, wheel housing, trunk carpet, insulating, molded roofs, foam insulating.

Fotogravura Zeyana Ltda.

Caxias do Sul/RS
Tel/Fax: 55 54 4001-3300/3301
www.zeyana.com.br

Products: Resin logos and emblems, automotive decoration, decorative banners, flexography prints and hot stamping, plastic injection and vacuum forming, industrial technical serigraphy, stickers, polycarbonate and aluminum panels.

Fras-Le S.A.

Caxias do Sul/RS
Tel/Fax: 55 54 3289-1000/1921
www.fras-le.com.br

Products: heavy and light lining and plates, lining for clutches, brake blocks, shoes (sliding shoes) and plates for motorcycles, plates for aircrafts, plates and shoes for trains and subways, molded and threaded lining and universal plates.

Freios Controil Ltda.

São Leopoldo/RS
Tel/Fax: 55 51 2111-9400/9494
www.cntroil.com.br

Products: Hydraulic brakes, master cylinders with and without tank, light and heavy wheel cylinders, light and heavy clutches cylinders, caliper repair, master cylinders and wheel repairs, brake servos, polymers products, injected air hoses, intake plates joints, valves cap joints, plastic rubber and metal sets, joints, rubber for hydraulic brakes, shock absorbers for refrigeration compressors, plugs and buffers for refrigeration, connectors and miscellaneous parts for refrigeration.

Freios Farj Indústria e Comércio Ltda.

Carapicuíba/SP
Tel/Fax: 55 11 3511-9666/9660
www.farj.com.br

Products: Brake system repairs and gear repairs.

Freudenberg-Nok Componentes Brasil Ltda.

Diadema/SP
Tel/Fax: 55 11 4072-8000/4079-2753
www.fncb.com.br

Products: Retainers e valve stem sealing, air conditioning filters, rubber mountings, kits for hydraulic steering repair, kits for hydraulic pump repair, wheels kits, gear kits, rubber sealing rings, homocinetic joint dusters, carter rubber joints, retainers, shock absorbers sealing and valve steam sealing.

FTE Indústria e Comércio Ltda.

São Bernardo do Campo/SP
Tel/Fax: 55 11 3343-3645/3641
www.fte.de

Products: Cylinders for clutches, oil tubing.

Fuchs Do Brasil S.A.

Jandira/SP
Tel/Fax: 55 11 4789-2311/2670/3072
Products: Industrial lubricants

Fundituba Indústria Metalúrgica Ltda.

Indaiatuba/SP
Tel/Fax: 55 19 2107-2000/3875-6181

Products: Blocks, headers, steering wheels, transmission boxes, clutches plates and casings for clutches.

Fupresa S.A.

Indaiatuba/SP
Tel/Fax: 55 19 3885-9608/9601
www.fupresa.com.br

Products: Clutch levers, gear levers, levers, rocker arms, external gear commands, welding for bodywork, chassis and engine, tooled and assembled parts, hinges, hood hinges, forks for clutches, cast parts, micro cast parts, scoop latches.

Garma Indústria e Comércio de Autopeças Ltda.

São Paulo/SP
Tel/Fax: 55 11 6946-5043/1948
www.garma.com.br

Products: torsion bars, differential spiders, spring sets, homocinetic, semi-axle and differential spiders.

Gate do Brasil Ltda.

Guarulhos/SP
Tel/Fax: 55 11 6431-5600/6432-5466
Products: Radiator fans.

Gates do Brasil Indústria e Comércio Ltda.

São Paulo/SP
Tel/Fax: 55 11 3848-8122/8170
www.gatesbrasil.com.br

Products: transmission chains, timing chains, pulleys, automatic tensioners and hoses.

Gauss Indústria e Comércio de Autopeças Ltda.

Curitiba/PR
Tel/Fax: 55 41 3021-2300
Products: Voltage regulators, rectifiers, ignition modules, diodes, injection pumps.

GE Plastics

São Paulo/SP
Tel/Fax: 55 11 3708-0500/0505
Products: Engineering and special plastics.

Gerdau Aços Especiais Piratini

Charqueadas/RS
Tel/Fax: 55 51 3323-2000/5705
www.gerdau.com.br

Products: Steels for mechanical construction, tools, stainless steels, laminates, castings and finishing.

Gestamp Paraná S.A.

São José dos Pinhais/PR
Tel/Fax: 55 41 2169-5100/5140
www.gestamp.com

Products: Stamped parts.

GF Autopeças Indústria e Comércio Ltda.

Limeira/SP

Tel/Fax: 55 19 3404-1800
www.gflamps.com.br

Products: headlights and lenses

GGB Brasil Indústria de Mancais e Componentes Ltda.

Barueri/SP
Tel/Fax: 55 11 4789-9070/4433
www.ggbearings.com

Products: Bearings, bushings, self-lubricating and sliding rings.

GKN do Brasil Ltda.

Porto Alegre/RS
Tel/Fax: 55 51 3349-9500/9333
www.gknplc.com

Products: Homocinetic joints and homocinetic semi-axles.

GKN Sinter Metals Ltda.

Hortolândia/SP
Tel/Fax: 55 19 2118-9400/9401
www.gknsintermetals.com

Products: Transmission cubes and pulleys.

Godks Indústria de Plásticos Ltda.

Diadema/SP
Tel/Fax: 55 11 4057-5000/5021
www.godks.com.br

Products: Front grilles, rear lights, lenses, license plate lights and warning triangles.

Gonvarri Brasil Produtos Siderúrgicos S/A

Araucária/PR
Tel/Fax: 55 41 3641-3900/3643-1126
www.gonvarri.com

Products: Hot and cold laminates, stripped and coated steels, and cutting of blanks, longitudinal and transversal cutting and pickling.

Goodyear do Brasil Produtos de Borracha Ltda.

Tires Division:
São Paulo/SP
Tel/Fax: 55 11 3281-4422/4432
www.goodyear.com.br

Products: Tires for automobiles, pick-ups, trucks, buses, ground leveling agricultural tractors, vans, airplanes, transportation and agricultural belt, packing films, hoses, Products for recapping and automotive pneumatic springs.

Grammer do Brasil Ltda.

Atibaia/SP
Tel/Fax: 55 11 2119-6200/6300
www.grammer.com.br

Products: mechanic and pneumatic suspension seat for trucks, buses, tractors and construction machines, static passenger and/or driver's seat for trucks, buses, tractors and construction machines, passenger seats buses, head rest, arm rest and metallic structures, components for automobiles seats, seat adjusters and rails.

Granero Limpadores de Pára-Brisas Ltda.

São Paulo/SP
Tel/Fax: 55 11 6918-2011
www.lpgranero.com.br

Products: wiper arms, wiper gears, wiper rubber, wiper pivots.

Grua Indústria e Comércio Ltda.

São Paulo/SP
Tel/Fax: 55 11 3931-0891/5744
www.grua.com.br

Products: Control cables for motorcycles e tractors, parts for motorcycles.

Grupo Ferrabraz Becker

São Leopoldo/RS
Tel/Fax: 55 51 3568-2277/7365

Products: Carbon steel and steel alloy forged and machined parts, gray and nodular iron cast and machined parts, aluminum gravity and aluminum pressure (injected) cast parts and plastic.

GT do Brasil S.A. Indústria e Comércio

Mauá/SP
Tel/Fax: 55 11 4544-1000/1550
www.gtdobrasil.com.br

Products: Hinges, stamped parts and nuts.

Haldex do Brasil Indústria e Comércio Ltda.

São Paulo/SP
Tel/Fax: 55 11 2135-5000/5034-9515
www.haldex.com.br

Products: brake automatic adjusters, Products for air treatment, servo gear, valves for trailers and semi-trailers, and valves for pneumatic suspension.

Hanna Indústria Mecânica Ltda.

Limeira/SP
Tel/Fax: 55 19 2114-4811/3442-4640

Products: Precision machining.

Harbin Plásticos Indústria e Comércio Ltda.

Diadema/SP
Tel/Fax: 55 11 4091-6555
www.hbharbin.com.br

Products: Caps

Hengst Indústria de Filtros Ltda.

Joinville/SC
Tel/Fax: 55 47 3027-9070/3424-6106
www.hengst.com.br

Products: Filters and lubricant oil filtering systems, fuel, air and oil separator for light and heavy engines, filters for automotive aftermarket, precision machining.

Holset Brasil

Guarulhos/SP
Tel/Fax: 55 11 6465-9791/0181

Products: Turbo compressor

Homerplast Indústria e Comércio de Plásticos Ltda.

São Paulo/SP
Tel/Fax: 55 11 2106-1200/1288

Products: engineering plastic technical injection parts.

Honda Componentes da Amazônia Ltda.

Manaus/Amazonas
Tel/Fax: 55 92 3616-5000/3615-4050

Products: Exhausts for motorcycles, handlebar and alloy wheels for motorcycles.

HT Componentes Automotivos Ltda.

São Paulo/SP
Tel/Fax: 55 11 6969-8344
www.htcomponentes.com.br

Products: Lamps.

Hübner Indústria Mecânica Ltda.

Araucária/PR
Tel/Fax: 55 41 2108 5000/5001
www.hubner.com.br

Products: Metallic components and machining services

Huf do Brasil Ltda.

Atibaia/SP
Tel/Fax: 55 11 4416-6056/4500
www.huf-group.com

Products: Latch and lock system for vehicles, door handles, steering column lock, cylinders with keys for vehicles, trunk locks.

Huziteka Estamparia de Metais Ltda.

Itu/SP
Tel/Fax: 55 11 4025-8400/4023-0088
www.huzi.com.br

Products: Seatbelts, stamped parts and fine cutting stamped parts.

Hidro Aluminum Acro S.A.

Itu/SP
Tel/Fax: 55 11 4025-6700/6755
www.hidroacro.com.br

Products: Aluminum tubes.

Hyva do Brasil Hidráulica Ltda.

Caxias do Sul/RS
Tel/Fax: 55 54 3209-3400/3401
www.hyva.com.br

Products: Hydraulic cylinders, hydraulic kits, movable floor platforms, roller tracks.

IBCA Indústria Metalúrgica Ltda.

Osasco/SP
Tel/Fax: 55 11 3604-8855/8850
www.cabobel.com.br

Products: Control flexible cables, cables for manual accelerators, clutches, brakes, chokes, hood knobs, speedometers, throttles, tachometers, engine shut-offs, oil wands, shift control systems.

IBCE Indústria Brasileira de Componentes Elétricos Ltda.

Caxias Do Sul/RS
Tel/Fax: 55 54 3212 8088

Products: Electric controls, electric harnesses, onboard electronics, speed restrictors and vehicles controllers.

Ibratec Indústria Brasileira de Artefatos Técnicos Ltda.

Curitiba/PR
Tel/Fax: 55 41 3316-2300/3347-9698
www.ibratecbrasil.com.br

Products: valves wands, rocking lever axle, screws for rocker arms regulators, brake engine axle, steering column axle, master pins, spring pins (shackle), shoe anchoring pins, grooved nuts, castings and machined parts, small sets assembly.

Icape Indústria Campineira de Peças Ltda.

Campinas/SP
Tel/Fax: 55 19 3231-7266/7943
www.icapec.com.br

Products: Machined parts for steering boxes, for transmission boxes, for combustion engines, for brake systems, for front and rear axle systems.

Ideal Standard Wabco Trane Indústria e Comércio Ltda.

Sumaré/SP
Tel/Fax: 55 19 2117-4600/2117-4700
www.wabco-auto.com

Products: Brake systems for commercial vehicles, vacuum pumps for brakes, brake cylinders, air compressors for brakes, exhaust brake, diskbrakes, ABS systems, solenoids and brake valves.

Igasa S.A. Indústria e Comércio de Autopeças

São José dos Pinhais/PR
Tel/Fax: 55 41 3382-1012/1291
www.iagasa.com.br

Products: Oil casings, casings and fuel tanks.

Igpecograph Indústria Metalúrgica Ltda.

Diadema/SP
Tel/Fax: 55 11 4070-8000/4075-3285
www.igpbr.com

Products: Hoods, front and rear panels, fenders and stamped parts.

Ikro Componentes Automotivos Ltda.

Canoas/RS
Tel/Fax: 55 51 3462-3333/3342
www.ikro.com.br

Products: Impellers, switches, ignition modules, voltage controllers, rectifiers, solenoids.

IKS Indústria de Cabos Ltda.

Salto/SP
Tel/Fax: 55 11 4028-0522-2480
www.iks.com.br

Products: Control cables

Ilpea do Brasil Ltda.

Jundiaí/SP
Tel/fax: 55 11 2136-1400/1415
www.ilpea.com

Products: Plastic injection parts.



On the market since 1950, when it began its activities making forged semi-axles, over the years it has become a supplier to practically all the assemblers of heavy vehicles, such as trucks, tractors, agricultural equipment and that for the specialized mining industry.

Today employing over 2,000 people in installations covering 300,000m² of land and 100,000m² of built area, it has three factories in Brazil and one in Argentina, producing forged steel up to 60Kg and cast steel up to 80Kg, which are supplied raw or finished from its modern machining and heat treatment installations.

Products: Prominent on the production line are components for transmission systems, engines, suspension and steering, front and rear axles.

Cinpal can make by design or sample any kind of forged, cast wrought or machined parts, axle shafts, propeller shafts, differential cases, pinion cross, pinion gears, side gears, gear box and transmission components, brake camshafts, engine gears, engine camshafts, spindles, steering knuckles, engine fly wheels, fly wheel ring gears, cylinder heads, and so on.

Spares: Although it serves predominantly vehicle assemblers, CINPAL also has a full line of REX brand products, which serves the top of the line spares market.

Technology: Intense training and technological interchange have enabled Cinpal to develop its own technology.

Quality: The quality guarantee system has been certified by ISO/TS 16949:2002 and NBR ISO 9001:2000 and its modern laboratories are equipped for physical, chemical and metallographic control of materials.

Clients: Agco, Agritech, Allevar, Amsted Maxion, ArvinMeritor, Caterpillar, CNH, Cummins, General Motors, Knorr-Bremse, Mercedes-Benz, MWM International Motores, Scania, Valtra, Voith, Volvo, ZF.

Commercial Director: Harry Eugen Josef Kahn



CINPAL Cia. Industrial de Peças para Automóveis

Av. Paulo Ayres, 240 – Vila Iase
06767-220 – Taboão da Serra – SP – Brazil

Tel. 55 11 2186 3700 • Fax 55 11 2186 3735
www.cinpal.com.br • dir.comercial@cinpal.com.br

IMCE Ind. Mecânica Com. Exp. Ltda.
São Paulo/SP
Tel/Fax: 55 11 3723-5555/3726-3968
Products: Synchronized rings, forks and plates.

Indab Indústria Metalúrgica Ltda.
São Paulo/SP
Tel/Fax: 55 11 6525-8888/8883
www.indab.com.br
Products: stamped and machined parts.

Indaru Indústria e Comércio Ltda.
Itu/SP
Tel/Fax: 55 11 4813-8488/4024-3137
Products: Anti-noise systems, acoustic insulation, headliner.

Indebrás Indústria Eletromecânica Brasileira Ltda.
São Paulo/SP
Tel/Fax: 55 11 3622-2500/3621-8299
www.indebras.com.br

Products: Fuel pumps with level sensors, electrical fuel pumps, steering indicator switch, switches, brake lights switches, reverse light switches, door switches, fuel level gauge, sensors, temperature sensors, fuel level sensors and trunk electric locks.

Indisa Equipamentos Industriais Ltda.

Campinas/SP
Tel/Fax: 55 19 3765-6000/6021
www.indisa.com.br

Products: Water pumps, machined parts, water pump repairs, tappets and relief valves.

Indústria Auto Metalúrgica S.A.

São Paulo/SP
Tel/Fax: 55 11 6333-8199/8188
www.iam.com.br

Products: Headlights, lamps, rearview mirrors.

Indústria de Artefatos de Borracha Paranoá Ltda.

Diadema/SP
Tel/Fax: 55 11 4066-1533
www.paranoarubber.com.br

Products: Rubber mats.

Indústria de Borrachas NSO Ltda.

Joinville/SC
Tel/Fax: 55 47 3439-0076/0194
www.nso.com.br

Products: Automotive hoses, sealing rings, stators, compacting bands.

Indústria de Peças para Automóveis Steola Ltda.

Guarulhos/SP
Tel/Fax: 55 11 6475-6680/6440-5877
www.steola.com.br

Products: Upper arm, stabilizers for tractors, front headlights, headlights for trucks and buses, rear lights for tractors, axle sleeves for tractors, exhaust mufflers for tractors.

Indústria de Radiadores Eliman Ltda.
Pelotas/RS
Tel/Fax: 55 53 3223-2311/1148
www.eliman.com.br

Products: Honeycombs, condensators, evaporators for air conditioning, intercoolers, radiators, heat radiators and oil radiators.

Indústria de Radiadores Nobre Ltda.

São João do Meriti/RJ
Tel/Fax: 55 21 2662-7480/2651-1478
www.radiadoresnobre.com.br

Products: Kits for radiators, and radiators.

Indústria e Comércio de Autopeças Rei Ltda.

Cajuru/SP
Tel/Fax: 55 16 3667-9400/3257
www.suporterei.com.br

Products: rubber buffers, buffers for spring bundles, rubber for shock absorbers, rubber for suspensions, bushings, components for axle and universal joints, rubber pads, pulleys, supports, supports for axle and universal joints, and gear box caps.

Indústria e Comércio de Autopeças Drucklager Ltda.

Campo Limpo Paulista/SP
Tel/Fax: 55 11 4039-3129/4038-2006
www.drucklager.com.br

Products: Bearings for clutches.

Indústria e Comércio de Juntas Universal Ltda.

Ibiporã/PR
Tel/Fax: 55 43 3158-1000
www.juntasuniversal.com.br

Products: Homocinetic joints and engine joints.

Indústria Eletrônica Bergson Ltda.

Osasco/SP
Tel/Fax: 55 11 3687-5044/3686-9191
www.bergson.com.br

Products: Horns, diodes, switches, rectifier plates, brush holders, voltage controllers, auxiliary and electronic relays and relays for headlights.

Indústria Marília de Autopeças S.A.

Guarulhos/SP
Tel/Fax: 55 11 6468-8477/6440-2474
www.marilia-as.com.br

Products: Cigarette lighters, ignition cables, fuse boxes, directional switches, change over switches, ignition switches, start switches, general switches, switches, oil pressure switches, light switches, brake light switches, auxiliary and electronic relays and brass terminals.

Indústria Mecânica Brasileira de Estampos Imbe Ltda.

São Paulo/SP
Tel/Fax: 55 11 3785-8800/0165
www.sodecia.com

Products: impact rods, welded sets, hinges, rear axles, door checks,

supports for the instrument panels, front suspension, fuel tank caps, fuel tanks, oil tubing and oil wands.

Indústria Mecânica Samot Ltda.

São Paulo/SP
Tel/Fax: 55 11 6353-4411/6946-5165:
Products: Precision machining for third parties.

Indústria Mecânica Néia Ltda.

Guarulhos/SP
Tel/Fax: 55 11 6432-3909/3679
Products: Brackets and steel rings.

Indústria Metalplástica Irbas Ltda.

São Bernardo do Campo/SP
Tel/Fax: 55 11 6875-2300/4178-3693
www.irbas.com.br

Products: Welded sets for bodywork, chassis and engine, clamps, stamped parts, machined parts and clamping pieces.

Indústria Metalúrgica Alli Ltda.

São Paulo/SP
Tel/Fax: 55 11 6783-9899/5392
www.ima.ind.br

Products: torsion bars, stabilizing rods, steering pitman arms, steering columns, wheel hubs, flanges, forks for clutches, shaft ends, nuts and differential spiders.

Indústria Metalúrgica Baptistucci Ltda.

Bragança Paulista/SP
Tel/Fax: 55 11 4035-8400/3812
www.baptistucci.com.br

Products: Caps, welded sets, hoses, stamped parts, pedals for clutches and brake pedals.

Indústria Metalúrgica Fontamac Ltda.

São Paulo/SP
Tel/Fax: 55 11 5687-3860
www.fontamac.com.br

Products: Body for doors springs, wiper bearings, bearings for starting engines, bearings for electric windows, aluminum and zamak cast parts, alternator covers, caps for gear boxes and radiator blowers.

Indústria Metalúrgica Frum Ltda.

Extrema/MG
Tel/Fax: 55 35 3435-1444/1467
www.frum.com.br

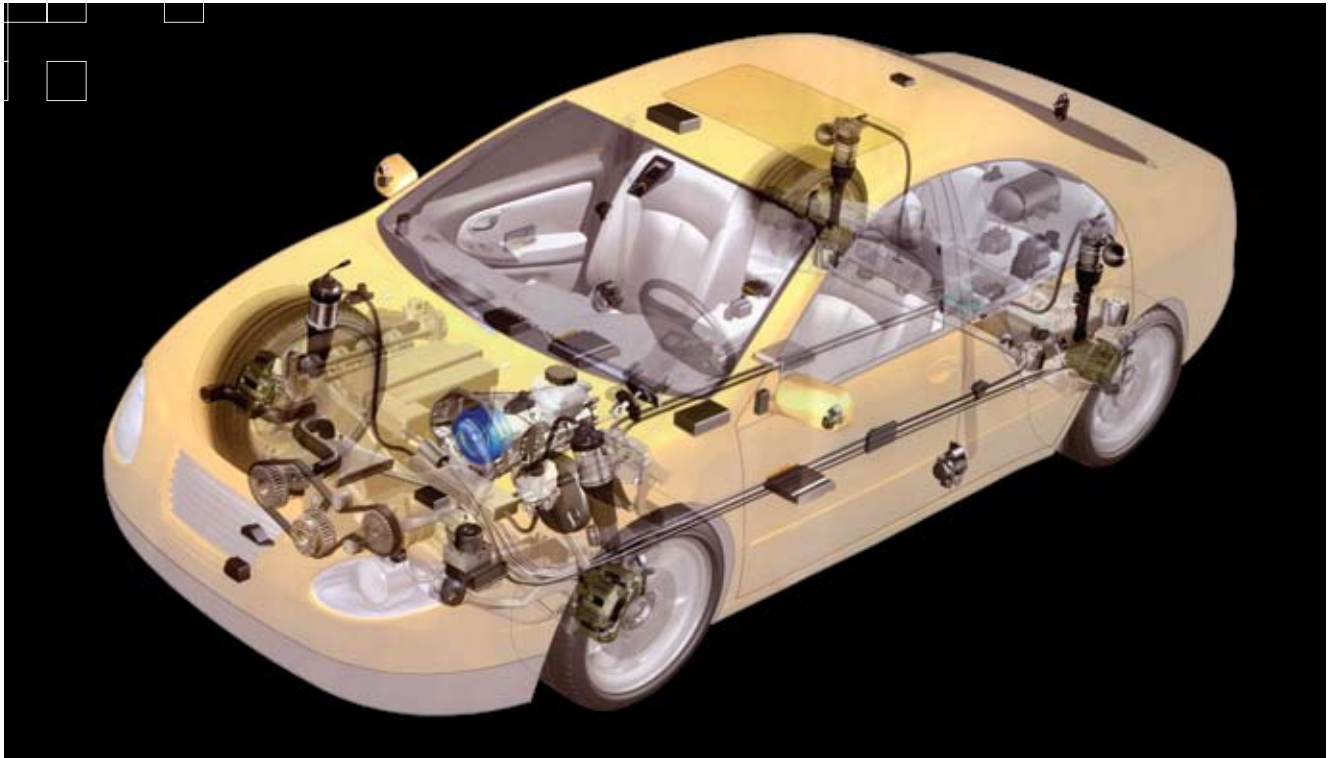
Products: Wheel hubs, supports, shackles, suspension arms, disks and brake drums and gray and nodular cast iron parts.

Indústria Metalúrgica Lipos Ltda.

Mauá/SP
Tel/Fax: 55 11 4516-5000/5006
Products: Screws and mounting pieces.

Indústria Metalúrgica MM Ltda.

São Paulo/SP
Tel/Fax: 55 11 6331-2599/8642
Products: Light and medium stamping up to 1600 tons, welded sets, spinning



With annual sales of more than \square 25 billion (based on 2006 figures), the Continental Corporation is one of the top five automotive suppliers worldwide. As a supplier of brake systems, systems and components for the powertrain and chassis, instrumentation, infotainment solutions, vehicle electronics, tires and technical elastomers, the corporation contributes towards enhanced driving safety and protection of the global climate. Continental is also a competent partner in networked automobile communication. The corporation currently employs approximately 150,000 at nearly 200 locations in 36 countries. The Corporation is organized into six divisions:

Chassis & Safety – \square 5 billion in sales, over 27,000 employees in 65 locations worldwide, the new division is positioned strategically as worldwide market and technology leader for brake and chassis systems, the networking of active and passive safety systems, and sensors.

Powertrain – \square 5 billion in sales and over 27,000 employees at 70 locations worldwide, this new division offers products and system solutions for powertrain, engine management, injection technology, sensors, actuators and hybrid technology. It lays claim to worldwide market and technology leadership in the area of economical and eco-friendly driving.

Interior – \square 6 billion in sales, the Interior division positions itself as worldwide market and technology leader for information management with systems that provide a link between the vehicle and the driver and passengers, between different vehicles, and between the vehicle and the infrastructure in which it operates. With more than 33,000 employees and 70 locations worldwide.

Passenger and Light Truck Tires – 25,000 employees and annual sales of close to \square 4.7 billion (2006). Following conclusion of the joint venture with Matador, Continental is now number 1 in passenger car tires in Europe and #4 worldwide. Since 2003 Continental has also been the leading supplier of original equipment passenger car tires in the European market and the leading manufacturer of winter and tuning tires.

Commercial Vehicle Tires – 8,000 employees and annual sales of close to \square 1.5 billion (2006), the division offers bus, truck and industrial tires for the most diverse service areas and application requirements. The products are all successful in the original equipment and replacement trade.

Contitech – ContiTech division is the world's major manufacturer in the field of non-tire rubber and plastics technology. As a development partner and OEM, the company develops and produces functional parts, components and systems for the automotive industry, machine and apparatus manufacturing, rail vehicles, printing, the building trade, the chemical and petrochemical industries, maritime navigation and aviation, which realized sales of close to \square 2.9 billion in 2006 and employs nearly 22,000.

Activities in Brazil:

- Barueri/SP
- Gravatá/RJ
- Ponta Grossa/PR
- São Bernardo do Campo/SP
- Camaçari/BA
- Guarulhos/SP
- Resende/RJ
- Campinas/SP
- Manaus/AM
- Salto/SP
- Várzea Paulista/SP



Continental do Brasil Produtos Automotivos Ltda.
Chassis & Safety Division

Av. Duque de Caxias, 2422 – Jardim Santa Lúcia – P.O. Box 54
13224-970 – Várzea Paulista – SP – Brazil
Tel. 55 11 4596-8000 • Fax 55 11 4596-8181

www.contiautomotive.com • carlos.fernandes@br.contiautomotive.com

expertise (hydraulic presses) and mechanical tube shaping.

Indústria Metalúrgica Puriar S.A.

Indaiatuba/SP
Tel/Fax: 55 19 3875-6868/5526
www.puriar.com.br

Products: Automotive catalysts, air filtering elements and air filters.

Indústrias Del Recambio do Brasil Ltda.

Iperó/SP
Tel/Fax: 55 15 3266-3045
www.irbrasil.com

Products: Trays.

Indústrias Mangotex Ltda.

Itu/SP
Tel/Fax: 55 11 2118-0000/9893
www.mangotex.com.br

Products: Hoses, fuel hoses and rubber mats.

Inergy Automotive Systems do Brasil Ltda.

Piraquara/PR
Tel/Fax: 55 41 2106-7200/7220
www.inergyautomotive.com

Products: Fuel systems, water tanks, cold start tanks and air ducts.

Injeplastic Injeção e Comércio de Plásticos Ltda.

São Joaquim das Bicas/MG
Tel/Fax: 55 31 3534-9855/8977

Products: Nylon injection parts.

Inpacom Indústria Paulista de Componentes Ltda.

São Paulo/SP
Tel/Fax: 55 11 2111-8687/6918-3878
www.inpacom.com.br

Products: Engine seals.

Instaladora São Marcos Ltda.

São Marcos/RS
Tel/Fax: 55 54 3291-8200/1213

Products: plastic tanks and galvanized parts, bumpers, caps, drip moldings for doors, air conditioning, rear ladders, hoses, horns, grids, casing, mirrors, water bottles, water tanks, exhausts, front protector, bumpers, roll bar, bed covers, injection accessories for automobiles.

Interni S/A Interiores para Veículos

Betim/MG
Tel/Fax: 55 31 3591-1300/1633

Products: Door sides, azonite door sides, polyurethane injection parts.

Intier Automotive Closures do Brasil Ltda.

Vinhedo/SP
Tel/Fax: 55 19 3826-7300/3090

Products: Electric-manual latches, buffers, actuators for latches, manual/electric window lifters, internal/external door, operating cables, rails for window lifters.

Intuição Comércio de Artefatos em Metal Ltda.

São Paulo/SP
Tel/Fax: 55 11 6918-1083

Products: Pressure camplates, brass flat washer, special laminates.

Invicta Vigorelli Metalúrgica Ltda.

Limeira/SP
Tel/Fax: 55 11 3404-6800/6802
www.vigorelli.com.br

Products: Trays, brake cylinders, wheel hubs, brake disks, hinges, supports, brake drums and flywheels.

Iochpe-Maxion S.A.

São Paulo/SP
Tel/Fax: 55 11 5508-3800/5506-7353
www.iochpe-maxion.com.br

Products: Handbrake levers, wheels rims, water pumps, oil pumps, chassis, hinges, latches for vehicles, lock for tracks dump bodies, locks for hoods, locks for trunks, door checks, wipers, spar, mechanical jacks, main handles and cylinders, stamped parts. pedals, wheels and transverse pieces.

Iperfor Industrial Ltda.

São Paulo/SP
Tel/Fax: 55 11 5543-0353
www.iperfor.com.br

Products: levers, rocker arms, ring gears, racks, differential spiders, wheel hubs, axles, gears, flanges, bearings, axle sleeves, axle ends and nuts.

Iramec Autopeças S.A.

Caçapava/SP
Tel/Fax: 55 12 3654-4100/3653-4311
www.grupoantolin.com

Products: window operation mechanism, electric window systems, electric locks for doors and electric locks for trunks.

Irmãos Amalcaburio Ltda.

Caxias do Sul/RS
Tel/Fax: 55 54 2101-9111/9031

Products: trucks bodies, exhausts, fenders plastics for trucks, hydraulic platforms and armored trucks for transportation of money.

Irmãos Parasma S.A. Indústria Mecânica

Diadema/SP
Tel/Fax: 55 11 4082-7600/7601
www.parasma.com.br

Products: Nuts, screws, studs bolts, washers, pins.

Isel Usinagem e Mecânica em Geral Ltda.

Betim/MG
Tel/Fax: 55 31 3597-1313
www.isel.com.br

Products: stamped and machined parts.

Isringhausen Industrial Ltda.

Diadema/SP
Tel/Fax: 55 11 4093-9300/9327
www.isri.com.br

Products: Seats with suspension for buses and trucks, springs for engine valves, technical springs.

Itaesbra Indústria Mecânica Ltda.

Diadema/SP
Tel/Fax: 55 11 4061-8899/8896
www.itaesbra.com.br

Products: Hood legs, stamped parts, reinforcement for doors, brake retaining and supports for instrument panel.

Italo Lanfredi S/A Indústrias Mecânicas

Monte Alto/SP
Tel/Fax: 55 16 3244-2100/3242-3393

Products: Brake drums, brake disks, wheel cylinder, master cylinders, calipers, brake supports, dumpers, pulleys, spar supports, rings, pressure plates for gears, transmission forks, flywheels, racks, axle control valves, clutches hubs, bearings supports, differential casing, mountings, mountings caps, gear selector drum.

Italspeed Automotive Ltda.

São Paulo/SP
Tel/fax: 55 11 5631-0200/0203

Products: Aluminum wheels.

ITW Delfast do Brasil Ltda.

São Paulo/SP
Tel/Fax: 55 11 5515-5800/5899
www.itw.com.br

Products: plastic injection components, door handles, security handles, engine cooling systems, repair technical parts, battery hydrometers.

Jardim Sistemas Automotivos e Industriais S/A

Mauá/SP
Tel/Fax: 55 11 4546-8600/4543-6531
www.metalurgicajardim.com.br

Products: steel fuel tanks, oil casing, suspension tray, gear shifts, brake levers, spare tire latches, supports, side members, stamped parts, assembled sets, buffers and fuel filler necks.

Joalmi Indústria e Comércio Ltda.

Guarulhos/SP
Tel/Fax: 55 11 2142-2412/2430
www.joalmi.com.br

Products: stamped and machined parts.

Jofund S.A.

Joinville/SC
Tel/Fax: 55 47 3461-6600/6608
www.fremax.com.br

Products: Brake disks, clutch plates, brake drums.

Johnson Controls Automotive Ltda.

São Bernardo do Campo/SP
Tel/Fax: 55 11 2104-3700/3702
www.italspeed.com.br

Products: Seats, instrument panels, consoles, door sides, roofs.



Ibratec – Indústria Brasileira de Artefatos Técnicos Ltda – is a 100% Brazilian company. Currently with 260 direct employees, its business is linked to various industrial segments. Its main mission is to supply metal structure and component solutions with the quality, delivery times, costs and in lots that meet the needs of its clients (automotive industry assemblers and systems operators).

In addition to creating jobs and generating income, Ibratec seeks to improve the quality of life of its employees and their families, as well as the well being of the community it is part of.

Background: Ibratec was founded in São Paulo on July 8th 1968 to work in the “field of furniture hinges, leather goods, and valves for cold-storage house compressors.” In the 1970s the government began a program to encourage the development of local industry, to develop technology, and replace imports. The automotive sector was one of the beneficiaries. Ibratec took this new opportunity and went on to become a supplier of automotive parts.

Main activities: Precision Series Machining from steel bars, forged steel and cast iron; Structure assembly, with machined parts and other materials; Hot Forming.

Equipment: Ibratec’s clients – multinational and Brazilian – have international-standard technical requirements. Hence, Ibratec has accompanied advances in technology and knowledge through continuous investment in training, management improvements and upgrading of production and control equipment.

Main production equipment: Single Spindle Screw Machine and Multiple Spindle Screw Machine; CNC lathes; Machining centers; Milling

machines; Conventional Centerless and CNC Grinder; Flat grinders; Inductive Heating Machines for forging; Presses; Induction Heat Treatment Machines.

Equipment used in our Quality Control: Chemical and Metallographic Laboratory; Salt-Spray Chamber; Kesternich Chamber; Microdurometer; Magnatest; Leica Particle Counting and Dimensioning System; Metallographic Microscope; Magnetic Field Gauge; Control equipment; Mitutoyo BRT-M507 Three-dimensional machine; Roundness Gauge; Mitutoyo PJ 300 Profile Meter; STARRET Profile Projectors, with microprocessor; Magnaflux; Coating thickness Gauge; Electro-deposited Layer Gauge.

Quality System Certification: ISO 9001:2000; ISO TS 16949:2002.

Environmental System Certification: ISO 14001:2004

Integrated Quality and Environmental Management Policy:

Ibratec, as a supplier of machined and assembled components to the automotive and agricultural industries, amongst others, is committed to the total satisfaction of its clients and other interested parties, adopting the following principles to achieve its objectives and targets: To supply quality-assured products, at a cost appropriate to the needs of its clients and delivered within the period requested; To properly dispose of its residues, applying pollution-prevention practices; To comply with environmental legislation, norms and regulations pertinent to the company’s activities, products and services; To constantly strive for improvement.

Social Commitment: Ibratec, being aware of its role in society, in addition to creating jobs and generating income, has sought to participate in the lives of its employees and their families through subsidized benefits (medical, food and drug assistance, etc.).

IBRATEC®

IBRATEC - Indústria Brasileira de Artefatos Técnicos Ltda.

BR 116, n. 20886 – CIC
81690-400 – Curitiba - PR - Brazil

Tel. 55 41 3316 2300 • Fax 55 41 3347 9698
www.ibratecbrasil.com.br • comercial@ibratecbrasil.com.br

**Jost Brasil
Sistemas Automotivos Ltda.**

Caxias do Sul/RS
Tel/Fax: 55 54 3209-2800/2811

Products: Fifth wheels, jacks, automatic hitches, container hitches, spare doors, pneumatic suspension, semi – hitch racks, mountings, hubodometers, rockshafts, tailpipes, and spare parts.

JTEKT Automotiva Brasil Ltda.

Piraquara/PR
Tel/Fax: 55 41 3673-8100/2659
www.jtekt.com.br

Products: Steering systems.

Juntoro Estamparia Ltda.

Diadema/SP
Tel/Fax: 55 11 4071-1188/1624

Products: Stamped parts.

**Jurubatech
Tecnologia Automotiva Ltda.**

São Paulo/SP
Tel/Fax: 55 11 5611-4177/2793
www.jurubatech.com.br

Products: Computerized aligners, computerized engine analyzers, suspension analyzers, brakes and alignments, digital gas analyzers, electrical system analyzers, tire balancers, vacuum pumps, graduated cylinders for refrigerated automotive gas, electromechanical parts for cars, trucks and buses, diagnostic equipment for electronic injection, automatic automotive air systems, special tools, hydraulic jacks, diesel smoke detectors, tire changers.

**Kae Componentes Plásticos
do Brasil Ltda.**

Caxias do Sul/RS
Tel/Fax: 55 54 3227-3211/4015

Products: Automotive electrical controls, fuse boxes, resales of fuses, tool boxes, special assemblies, thermoplastic injection and precision metal stamping.

Karmann-Ghia do Brasil Ltda.

São Bernardo do Campo/SP
Tel/Fax: 55 11 4344-5800/4352-1764
www.karmannghia.com.br

Products: Tooling, stamped parts, assembly of vehicles, prototypes, subsets, forking devices, body shells, body shells for pick-ups and doors.

Kautex Textron do Brasil Ltda.

Guararema/SP
Tel/Fax: 55 11 2175-8300/4693-3537

Products: Fuel tanks, filling tubes, air ducts and various plastic tanks.

Keiper do Brasil Ltda.

São Paulo/SP
Tel/Fax: 55 11 2113-4000/4023
www.keiper.com.br

Products: Front and rear metallic structures, automotive seats, rails, reclining mechanisms.

Keko Acessórios Ltda.

Caxias do Sul/RS
Tel/Fax: 55 54 2101-0600/0606
www.keko.com.br

Products: Tubular and plastic accessories for pick-ups and vehicles, roll bars, front and rear protectors, baggage racks, hoses, trailer hitches, boat covers, tow bars. Headlights, real window grills, front grilles, bumpers, spare doors, light protectors, light supports, roll bars.

Kenametal do Brasil Ltda.

Indaiatuba/SP
Tel/Fax: 55 19 3936 6094/4431
www.kenametal.com.br

Products: Turning tools turning, milling, drilling, broaching and fixing systems.

Kidde Brasil Ltda.

Extrema/MG
Tel/Fax: 55 35 3435-1777/1501
www.kidde.com.br

Products: Fire extinguishers.

Kikuchi do Brasil Ltda.

Cabreúva/SP
Tel: fax: 55 11 4529-1100/1111

Products: Stamped parts.

KJ Indústrias Reunidas Ltda.

Carapicuíba/SP
Tel/Fax: 55 11 4187-3733/3726
www.kjautopecas.com.br

Products: Headlight frames, caps, wheel disks, front grilles, clamps, handles, bumpers, plastic tanks.

**Klüber Lubrication
Lubrificantes Especiais Ltda.**

Barueri/SP
Tel./Fax: 55 11 4166-9000/9089

Products: Special lubricants for various automotive applications.

Kostal Eletromecânica Ltda.

São Bernardo do Campo/SP
Tel/Fax: 55 11 2139-6100/6307
www.kostal.com

Products: Electrical seat adjustments with memory, fuse boxes, switches, electric window controls, windshields wiper switches, switches, pressure switches, key switches, mirror switches, swivel switches, power meters, auxiliary and electronic relays, sensors and central electric systems.

Koyo Steering Brasil Ltda.

Piraquara/PR
Tel/Fax: 55 41 3673-8100/2659
www.koyo.com.br

Products: Manual, power, electric-power and electric steering systems.

Kromberg & Schubert do Brasil Ltda.

Itatiba/SP
Tel/Fax: 55 11 4524-9000/5662
www.kroschu.com

Products: Electric automotive harnesses.

**Krupp Módulos Automotivos
do Brasil Ltda.**

São José dos Pinhais/PR
Tel/Fax: 55 41 2106-4898/4825

www.tka-as.thyssenkrupp.com
Products: Suspension modules.

KS Bronzinas Ltda.

Nova Odessa/SP
Tel/Fax: 55 19 3466-9700/9833
www.grupoks.com.br

Products: Bearings and inserts.

KS Pistões Ltda.

Nova Odessa/SP
Tel/Fax: 55 19 3466-9700/9787
www.ksp.com.br

Products: Pistons for gasoline or diesel engines and aluminum cylinders

**KSR Automotiva
Indústria do Brasil Ltda.**

São Paulo/SP
Tel/Fax: 55 11 5501-1977
www.ksrint.com

Products: Accelerators with electronic and pedal controls.

**Labortex Indústria e Comércio
de Produtos de Borracha Ltda.**

Santo André/SP
Tel/Fax: 55 11 4428-6001/4991-4600
www.labortex.com.br

Products: Rubber buffers, bushings, rubber mountings, dusters, sealing trim in rubber and solid rubber profiles.

LAD Indústria e Comércio Ltda.

Lages/SC
Tel/Fax: 55 49 3226-0444/0222
www.lampauto.com.br

Products: Clutch plates and disks.

Lang Mekra do Brasil Ltda.

Sorocaba/SP
Tel/Fax: 55 15 3325-3320/3966

Products: Mirrors for commercial vehicles, rearview cameras.

**Lear do Brasil Indústria e Comércio
de Interiores Automotivos Ltda.**

São Paulo/SP
Tel/Fax: 55 11 2131-8100/8194
www.lear.com

Products: Seats for automobiles, buses and trucks, consoles, door panels, injected parts, sunvisors, internal upholstery, and molded roofs.

Leoni Automotiva do Brasil Ltda.

Itu/SP
Tel/Fax: 55 11 4022-9200:3390
www.leoni.com

Products: Electric harnesses.

Lepe Indústria e Comércio Ltda.

Guarulhos/SP
Tel/fax: 55 11 6475-7071/6440-6198

Products: Supports catch plates, casings, pulleys, turbines, flanges, crankshaft gears.

Liko Indústria e Comércio de Prod. Químicos Ltda.

Novo Hamburgo/RS
Tel/Fax: 55 51 2108-4100/4101

Products: Water-based industrial paints, solvents, enamels and synthetic primers, URV paints and varnishes, powdered paints.

Litens Automotive do Brasil Ltda.

Atibaia/SP
Tel/Fax: 55 11 4414-5901/5919
www.litens.com

Products: Pulleys, automatic tensioners.

Loptosa Indústria e Comércio de Torneados Ltda.

São Paulo/SP
Tel/Fax: 55 11 2273-5111/2274-3440
www.lopsa.com.br

Products: Clamps, screws, machined parts, pins, screwed pins and nuts.

Lubrizol do Brasil Aditivos Ltda.

Rio de Janeiro/RJ
Tel/Fax: 55 21 2276.7000/7021

Products: Additives for fuels and lubricants

Mafflow do Brasil Ltda.

Curitiba/PR
Tel/Fax: 55 41 2106-0600/0601

Products: Hoses for refrigeration fluid for air conditioning systems, hoses for fluid for power steering systems, drying filters for air conditioning systems.

Magal Ind. e Com. Ltda.

Monte Mor/SP
Tel/Fax: 55 19 3889-9300/9393

Products: High pressure casting aluminum parts - crankcases, transmission casings, bearings, supports, caps and engine blocs.

Magius Metalúrgica Ind. S/A

São José dos Pinhais/PR
Tel/Fax: 55 41 2169-9400/3282-1870
www.magius.com.br

Products: Structural stamped parts for trucks, buses, tractors and harvesters, various supports, plates, girders, hoses, profiles.

Magal Indústria e Comércio Ltda.

Monte Mor/SP
Tel/Fax: 55 19 3889-9319/9393
www.magal.ind.br

Products: Transmission casings, crankcases, high pressure aluminum cast parts, and engine caps.

Magna Closures do Brasil Produtos e Serviços Automotivos Ltda.

Vinhedo/SP
Tel/Fax: 55 19 3826-7300/3090
www.magnaclosures.com

Products: Manual and electrical latches, buffers, actuators, manual and electrical window lifters, internal and external door handles, rails for window lifters and cables.

Magneti Marelli Sistemas Automotivos Powertrain Division

Hortolândia - SP
Tel/Fax: 55 19 2118-6189/6160
www.magnetimarelli.com.br

Products: electronic injection systems, electronic controls, injector nozzles, throttle housing and drive by wire, fuel pipes, catch plate intakes, pressure regulators and gear management systems.

Electronic Systems Division

Hortolândia/SP
Tel/Fax: 55 19 2118-6534/2500

Products: instrument panels, telematics, body computers, electronic plates and modules, immobilizers.

Exhaust Division

Hortolândia/SP
Tel/Fax: 55 19 3808-7242/7207

Products: exhaust systems, silencers, catalytic converters, primary pipes, and tubular catch plates.

Illumination Division

Contagem/MG
Tel/Fax: 55 31 2129-5206/3396-2882

Products: headlights and automotive lights.

Magneti Marelli Cofap Cia Fabricadora Departs

Mauá/SP
Tel/Fax: 55 11 2144-1000/1012
www.grupofiat.com.br

Products: Shock absorbers, suspension components, suspension system assembly, gas springs, sinterized parts, cylinder liners, cast parts.

Magno Peças Indústria Comércio Importação e Exportação Ltda.

São Bernardo do Campo/SP
Tel/Fax: 55 11 6842-1000/1001
www.magnopecas.com.br

Products: Gear levers, levers and chassis.

Mahle Metal Leve S.A.

Mogi Guaçu/SP
Tel/Fax: 55 19 3861-9100/9166
www.mahle.com.br

Products: Pistons and connecting rods.

Industrial units:

São Bernardo do Campo/SP
Tel/Fax: 55 11 4173-0711/0758

Products: Rod bearings and camplates.

Limeira/SP

Tel/Fax: 55 19 3404-7700/7770

Products: Spare parts.

São Paulo/SP
Tel/Fax: 55 11 5545-0711/0604

Products: Pistons.

Itajubá/MG
Tel/Fax: 55 35 3629-4000

Products: Rings and bushings.

Mahle Metal Leve

Miba Sinterizados Ltda.

Indaiatuba/SP
Tel/Fax: 55 19 3834-9900/9911
www.mahle.com.br

Products: Command pulleys and

engine distribution gears, oil pump rotors and gears, synchronized cubes, sensor rings, gear forks, rod guides, valve bodies, connecting rods, valve plates, locking eyes, shock absorber components and hermetic compressor components.

Mangels Indústria e Comércio Ltda.

Três Corações/MG
Tel/Fax: 55 35 3239-2277/2247
www.mangels.com.br

Products: Aluminum, steel and alloy wheels, compressed air tanks, fuel tanks.

MANN+HUMMEL Brasil Ltda.

Indaiatuba/SP
Tel/Fax: 55 19 3894-9801/9467
www.mann-hummel.com

Products: Intake elbows, air filters, fuel filters, oil filters, fuel pipes, resonators, valve caps, air intakes, and regulatory valves.

Mastra Indústria e Comércio Ltda.

Limeira/SP
Tel/Fax: 55 19 3446-4300/4327
www.mastra.com.br

Products: Automotive catalytic converters, exhausts, machined parts and automotive tubes.

Manuli Auto do Brasil Ltda.

Curitiba/PR
Tel/Fax: 55 41 2106-0600/0601

Products: Hoses for air conditioning, hoses for power steering systems, drying filter for air conditioning systems.

Maringá Soldas S.A.

Curitiba/PR
Tel/Fax: 55 41 3346-2928/3245-0613
www.maringasoldas.com.br

Products: Headers for diesel engines.

Master Sistemas Automotivos Ltda.

Caxias do Sul/RS
Tel/Fax: 55 54 3209-2900/2922

Products: Air brakes and spare parts.

Maxiforja S.A. Forjaria e Metalurgia

Canoas/RS
Tel/Fax: 55 51 2121-8900/8955
www.maxiforja.com.br

Products: Couplings, steering arms, connections, ring gears, wheel hubs, axle valve commands, "s" axles for brake systems, gears, and forks for clutches, sleeves, axle sleeves, cast parts, pinions, semi-axles and crankshaft gears.

MB Metalbages do Brasil Ltda.

Taubaté/SP
Tel/Fax: 55 12 3627-6400/3686-1719
www.gestamp.com

Products: Axles, bumpers, stamped parts, auxiliary parts, instrument panel parts, supports.

Mecânica Industrial Centro Ltda.

Mauá/SP

Tel/Fax: 55 11 4536-8100/8104
www.mic.ind.br**Products:** Braces, levers, steel rings, camplates, steering bars, bushings, stoppers, buffers, suspension bearing brackets, deflectors, axles, pistons, gears, flanges, forksfor clutches, hood rods, sleeves, springs, screws, pins, pulleys, nuts, brake regulators, wheel cylinder repairs, bearings, supports, locks, valves.**Mecânica Industrial Colar Ltda.**

Caixas do Sul/RS

Tel/Fax: 55 54 3213-1188/1064
www.colar.com.br**Products:** Screws, cold stamped parts, stud bolts and washers.**Mecano Fabril Ltda.**

Osasco/SP

Tel/Fax: 55 11 3652-5966/5999
www.mecano.com.br**Products:** machined and cold formed parts, stoppers, connections, axles, valve guides, special screws, bleeder valves, machined parts, pins, brake pistons, oil pump pistons valve plates, tappets, diesel fuel tubes.**Mecaplast do Brasil****Indústria Comércio****Importação e Exportação Ltda.**

São Paulo/SP

Tel/Fax: 55 11 3901-8560/3904-8653
www.mecaplast.com**Products:** Consoles, steering column covers, ashtrays, side wheel disks, doors-sleeves, sills, intake elbows, fuel pipes, valve command caps, chain covers, battery boxes, oil pans, engine casing and internal finishing.**Mesgastamp Industrial Ltda.**

Mauá/SP

Tel/Fax: 55 11 4546-3030
www.mesgastamp.com.br**Products:** Stamped parts.**Melco Automotivos do Brasil Ltda.**

Barueri/SP

Tel/Fax: 55 11 4688-1886/1887

Products: Starter motors.**Messastamp****Indústria Metalúrgica Ltda.**

Guarulhos/SP

Tel/Fax: 55 11 2117-8550/6412-2093
www.messastamp.com.br**Products:** Window gutters, latches, hood and glove box latches, window lifters, stamped parts, pedals, crankcases.**Metagal Indústria e Comércio Ltda.**

Diadema/SP

Tel/Fax: 55 11 4070-7759/7666
www.metagal.com.br**Products:** Electrical and manual external mirrors systems, prismatic internal mirrors, electrochromic materials.**Metal Leve S.A. - Filtros**

Mogi Guaçu/SP

Tel/Fax: 55 19 3861-9572/1159
www.mahle.com.br**Products:** Air filters, filter elements, oil separators, filtration systems, fuel filters, oil filters and filtration modules.**Metal Técnica Bovenau Ltda.**

Rio do Sul/SC

Tel/Fax: 55 47 3531-1950/1970
www.bovenau.com.br**Products:** Hydraulic jacks.**Metalac SPS****Indústria e Comércio Ltda.**

Sorocaba/SP

Tel/Fax: 55 15 3334-3500/3552
www.metalac.com.br**Products:** Special screws, screws, hexagonal bolts, components, digital torque meters.**Metalcoop - Cooperativa de
Produção Ind. de Trabalhadores
em Conformação de Metais**

Salto/SP

Tel/ Fax: 55 11 40211800/1840

Products: Cold forged, extruded parts, axles, pinions, bushings for chains, tube shaping.**Metale Produtos Metalúrgicos Ltda.**

Taboão da Serra/SP

Tel/Fax: 55 11 2124-9800-9810
www.metale.com.br**Products:** Gauges for carburetors, flanges.**Metalkraft S/A Injeção e Usinagem**

Pinhais/PR

Tel/Fax: 55 41 2106-5400/5450
www.metalkraft.com.br**Products:** Injected aluminum parts and machined parts.**Metalpó Indústria e Comércio Ltda.**

São Paulo/SP

Tel/Fax: 55 11 3906-3000/3904-7680
www.metalpo.com.br**Products:** Sinterized parts, bronze sinterized bushings and iron sinterized bushings.**Metalúrgica Ática Ltda.**

Diadema/SP

Tel/Fax: 55 11 4061-8200/8225.

Products: Automotive stamped parts.**Metalúrgica Atra Ltda.**

São José dos Pinhais/PR

Tel/Fax: 55 41 2102-2300/2301
www.atra.com.br**Products:** Stamped parts and welded components, tubular structures and wiring sets.**Metalúrgica Cartec Ltda.**

São Paulo/SP

Tel/Fax: 55 11 2272-9244/2274-8310
www.metalurgiacartec.com.br**Products:** Injector tubes for engines.**Metalúrgica Confor Ltda.**

Itapira/SP

Tel/Fax: 55 19 3843-9999/9996
www.scapex.com.br**Products:** Automotive catalytic converters, exhausts and exhaust pipes.**Metalúrgica de Tubos
de Precisão Ltda.**

Guarulhos/SP

Tel/Fax: 55 11 2146-4111/4150

Products: Precision welded or drawn tubes in carbon steel and welded/curved tubular parts and sets.**Metalúrgica Della Rosa Ltda.**

Santa Bárbara D'Oeste/SP

Tel/Fax: 55 19 3464-9666/3455-1661
www.dellarosa.com.br**Products:** Double-mounted joints, steering bars, steering terminals, terminal bars and central terminals.**Metalúrgica Denk Ltda.**

São Bento do Sul/SC

Tel/Fax: 55 47 3635-1725/0087

Products: Technical parts in ferrous and non-ferrous metals, forging, machining and assembly of sub-sets.**Metalúrgica DS Ltda.**

Nova Veneza/SC

Tel/Fax: 55 48 3461-2700/3476-0220
www.mds.ind.br**Products:** Wheel hubs, brake disks, bearings and brake drums.**Metalúrgica Iguacu Ltda.**

São Caetano do Sul/SP

Tel/Fax: 55 11 4224-6384/4228-3207
www.iguacu.ind.br**Products:** Parts for carburetors and temperature sensors.**Metalúrgica Knif Ltda.**

Diadema/SP

Tel/Fax: 55 11 4053-4422/4044-9669
www.knif.com.br**Products:** Braces, camplates, buffers, plate springs, stamped parts, clamping pieces and caps.**Metalúrgica Mardel Ltda.**

Ribeirão Pres/SP

Tel/Fax: 55 11 4828-8900/8907
www.mardel.com.br**Products:** Braces, buffers, fuel tank nozzles, welding for bodywork, chassis and engines, deflectors, supports, caps, radiator tubes.**Metalúrgica Mauses****Indústria e Comércio Ltda.**

São Paulo/SP

Tel/Fax: 55 11 3909-0900/3904-8913
www.mauser.com.br**Products:** Fuse boxes, ashtrays, connectors, air diffusers, light switches, roof lights stamped parts, plastic injected parts, machined parts and sockets.



2007 was a great year for Iveco in Brazil. In the year it celebrated 10 years in the country, the Italian brand increased its sales by over 90%, far in excess of the local market average growth rate of 30%.

The company has great hopes for 2008, as it has just launched two new products on the Brazilian market, identical to the recently launched products on the European market.

One is the Daily light truck, which competes on the 3.5 to 7 ton segment. Equipped with the new Iveco F1C engine, which is the most powerful in the category, the Daily has technical features that separate it from the competition, being capable of carrying more cargo, either in volume or weight terms. The other model is the Stralis heavy truck, already known as the most economical heavy truck in its category in Brazil and now with a sophisticated cab, which is the same as the one currently used in Europe.

The plant in Sete Lagoas, Minas Gerais State, has been boosting its production and in 2007 will produce over 12,000 units (growth of 50%), including light, medium and heavy trucks and microbuses (as well as diesel engines). The unit is on an area of 2.35 million m², of which it occupies 600,000 m², with 100,000 m² being built on. The unit employs 2,300 people.

Another reason for optimism for the brand in Brazil is expansion of

the dealership network, which in 2007 grew by 20%, with the opening of 12 new dealerships, making 64 around the country. In 2008 about 30 new assistance centers will enter operation in Brazil.

Iveco will invest R\$ 375 million in the period 2008 to 2010, raising the company's competitive potential in Brazil. Amongst the plans is the launch of two new families of products a year on the local market, which will be developed at the new Development Center to be opened at the same Industrial Complex in Sete Lagoas in 2008. The new center will work in conjunction with the rest of the Iveco research centers worldwide.

The chance of using the extensive technological know-how that Iveco has worldwide is one of the great advantages the Brazilian operation has. Iveco has the most complete range of commercial vehicles on the world market and is one of the largest manufacturers in the world of trucks, buses, and engines. It has 43 plants in 18 countries, employing 25,000 people and selling 270,000 vehicles a year in over 100 nations. Its diesel engine production alone exceeds 500,000 units a year.

Iveco Brasil operates in an integrated manner all over South America. The Sete Lagoas plant is part of a productive structure that includes the factory in Córdoba (Argentina) and La Victoria (Venezuela). In this way the company is ready to serve the markets' varied demands.

IVECO

COM VOCÊ, TRANSPORTANDO O NOVO BRASIL.

Iveco Latin America

Rua Senador Milton Campos, 175
34000-000 – Nova Lima – MG – Brazil

Tel. 55 31 2123 4999 • Customer service 0800-7023443
www.iveco.com.br

Metalúrgica MM-SP Ltda.

São Paulo/SP

Tel/Fax: 55 11 3405-4600/4606

Products: Welded sets, hinges, stamped parts and tubular parts.**Metalúrgica Nakayone Ltda.**

Cabreúva/SP

Tel/Fax: 55 11 4529-1600/1608

www.metalnk.com.br

Products: Doors, hoods, fenders, bumpers, seat structures, and chassis side members.**Metalúrgica Oniz****Indústria e Comércio****Exportação Importação Ltda.**

Cotia/SP

Tel/Fax: 55 11 4612-8044/4617-4311

www.onixmetal.com.br

Products: Levers, camplates, gears and nuts.**Metalúrgica Paschoal Ltda.**

São Bernardo do Campo /SP

Tel/Fax: 55 11 4178-4088/4326

www.paschoal.com.br

Products: Braces, welding for bodywork, chassis and engines, stamped parts and supports.**Metalúrgica Quasar Ltda.**

Santo André/SP

Tel/Fax: 55 11 4428-5030/4991-1044

Products: Oil regulators, heat deflectors, pedals, stamped part.**Metalúrgica Rigitec Ltda.**

Capivari/SP

Tel/Fax: 55 19 3492-9100/9101

www.rigitec.com.br

Products: Nylon tubes for fuel systems, injector tubes for engines and fuel tubes.**Metalúrgica Riosulense S.A.**

Rio do Sul/SC

Tel/Fax: 55 47 3531-4000/4070

www.riosulense.com.br

Products: Valve guides, tappets, cylinder liners, valve guide liners, valve springs, injector nozzle sleeves, valve seat rings, catch plates, connections and cast parts.**Metalúrgica Saraiva
Indústria e Comércio Ltda.**

Biguaçu/SC

Tel/Fax: 55 48 3285-5080

www.saraivaretrovisores.com.br

Products: Mirrors, motorcycle storage boxes.**Metalúrgica Schadek Ltda.**

Porto Feliz/SP

Tel/Fax: 55 15 3262-3112/4359

www.schadek.com.br

Products: Oil pumps, water pumps, water pump repairs, distribution chains, gears, stevedore chain kits, and relief valves.**Metalúrgica Schwarz S/A**

Pinhais/PR

Tel/Fax: 55 41 2106-8700/8706

Products: Forged and machined parts in aluminum and its alloys.**Metalúrgica Suprens Ltda.**

Campo Limpo Paulista/SP

Tel/Fax: 55 11 4812-9900/9911

www.suprens.com.br

Products: Steel braces.**Metalúrgica THF
Indústria e Comércio Ltda.**

Cachoeirinha/RS

Tel/Fax: 55 51 3470-2444/6140

www.mthf.com.br

Products: Stamped parts.**Metalúrgica Tuba Ltda.**

Barueri/SP

Tel/Fax: 55 11 4161-2119/1210

www.cables.tuba.com.br

Products: Clutch and brake cables.**Metalúrgica Tuzzi Ltda.**

São Joaquim da Barra/SP

Tel/Fax: 55 16 3810-7000/7070

www.metusa.com.br

Products: Traction bars, upper arms, stabilizers, spring sets, hydraulic shifts and levelers.**Metalzul Indústria Metalúrgica
e Comércio Ltda.**

São Paulo/SP

Tel/Fax: 55 11 5511-5725/5512-6952

www.metalzul.com.br

Products: Stamped parts, profiled parts and welded sets.**Methal Company Industrial Ltda.**

Curitiba/PR

Tel/Fax: 55 41 3028-1534/1544

Products: Steering columns, latches, supports and roofs.**Metisa – Metalúrgica
Timboense S.A.**

Timbó/SC

Tel/Fax: 55 47 3281-2222/2223

www.metisa.com.br

Products: Ripper arms, laminated and hot formed comers, adaptor teeth for loaders and back hoes, disks for ploughs grills, grapples to recover shoes, blades for levelers, tractor blades, parts for agricultural implements and shoes for crawler tractors.**MGI Coutier Brasil Ltda.**

Jundiá/SP

Tel/Fax: 55 11 4815-9500/9519

www.mgicoutier.fr

Products: Door checks and fuel tubes.**Michelin – Sociedade Michelin
de Participações Indústria
e Comércio Ltda.**

Rio de Janeiro/RJ

Tel/Fax: 55 21 2429-4711/4902

www.michelin.com.br

Products: Tires, inner tubes, protectors, steel cables for tires and curb ribs used in retreading.**Miroal Indústria e Comércio Ltda.**

São Bernardo do Campo/SP

Tel/Fax: 55 11 4178-5055/8002

www.miroal.com.br

Products: Stamped filter components, hood hinges, latch links, stamped parts and seat regulators.**Minas Plastic – Indústria Comércio
Importação e Exportação
de Plásticos Ltda.**

Mateus Leme/MG

Tel/Fax: 55 31 3535-4950/4951

www.minasplastic.ind.br

Products: Spare wheel box lining, linings, consoles, armrests, engine covers, package shelves, spaeer wheel supports, steering column covers, grab handles, clamping pieces and buttons.**Molex Brasil Ltda.**

São Paulo/SP

Tel/Fax: 55 11 3871-8330/3611-1891

www.molex.com

Products: Electric harnesses, connectors and wire terminals.**Montepino Ltda.**

São Paulo/SP

Tel/Fax: 55 11 6748-0100/5926

www.montepino.com.br

Products: Hinges, protective bar profiles, profiles for gears, profiles for hinges and profiles for clutches.**Moto Peças Transmissões S/A**

Sorocaba/SP

Tel/Fax: 55 15 3228-3222/3494

Products: - Components forgears, and differentials for trucks and buses.**MTA Brasil Indústria e Comércio de
Componentes Automotivos Ltda.**

Arujá/SP

Tel/Fax: 55 11 3405-4959-4991

www.mta.it

Products: Fuse boxes, fuses, radiator caps, battery terminals.**MTE – Thomson Indústria e
Comércio Ltda.**

São Bernardo do Campo/SP

Tel/Fax: 55 11 4393-4343/4361

www.mte-thomson.com.br

Products: Heat switches, oxygen sensors, throttle sensors, pressure sensors, temperature sensors, electronic injection sensors, thermistors and thermostats.**Mubea do Brasil Ltda.**

Taubaté/SP

55 12 3627-5000/5007

www.mubea.com

Products: Suspension and engine valve springs.**Mueller S.A. Indústria e Comércio
Industrial units:**

São Paulo/SP

Tel/Fax: 55 11 2105-3400/2105-3499

Contagem/MG

Tel/Fax: 55 31 2105-3400/3499

Matozinhos/MG

Tel/Fax: 55 31 3712-1015/1512

www.mueller.com.br



Microinox is specialized in the manufacture and commercialization of parts and components such as assembled and sub-assembled. The industrial process follows international standards of quality. The modern industrial installations are located in Caxias do Sul - (RS/Brasil), where 150 kinds of metallic alloys are produced. The components produced by Microinox are developed in partnership with the customers, mainly of the automotive chain, and all necessary care of specific requirements involving new parts or substitution of other existing ones. In addition the automotive chain, Microinox also cares of industrial equipment markets for food, mechanical, and agricultural sector. Microinox is the biggest industrial unit of investment casting in South America in volume of production. The company possesses constructed area of 7.400 m², with current productive capacity of 1.700 tons/year.

Microinox is a global and socially responsible company. It invests in diverse projects in the areas of education, environment, professional qualification, culture and volunteer, among others. Invest in the local community and co-workers shows the position of responsibility of the company, ethics and quality. Thus, the company brings positive benefits and results for all.

Our Products – Through investment casting process Microinox develops parts of complex geometry. The sizes vary of 10 mm to 400 mm, while the weight vary from 1g approximately to 20 kg. With investment casting process it is possible to reduce machining operations minimizing the costs of the final product. Microinox also possess know how to execute machining roughness surface and finishings, releasing ready parts for assembly. Another differential is its detached ability in the management of assembly of systems for customers, where Micro-

inox controls outsourcing of diverse parts that will be used in the assembly of final product, reducing costs with time loss, in logistic and the administrative controls. Moreover, Microinox guarantees the quality of the parts using equipments and services such as x-rays, magnaflux, and metallography inspections. Also it count with detention of cracks, penetrating inspection, hydro test, mechanical assays and dimensional inspections, own heat treatments, allowing to reach the specifications techniques demanded for the customers, with relation to the hardness and structure of the parts. We produce several types of alloys. Steel-carbon, stainless steel, austenitic and maraging steel, nickel alloys and cobalt are some examples. The company is opened to evaluate all and any specific demand of client request.

Quality, Our Great Differential – Microinox possess certification ISO 9000:2000, Certification TS 16949 and Conformity with European standard 97/23/EC (PED). In the management of the processes, modern and efficient systems of quality are used that result of serious and engaged work with the excellence of the products.

New technologies – Aiming to keep the competitiveness in the market where Microinox acts, it is always innovating and searching new technologies to add value to its process, initiating by manufacturer expansion of area and the creation of a machining park with 5.000 m², robot ceramic coating system and continues calcination ovens. Besides we are bringing innovations for the area of finishing of parts automating operations. Through these investments we aim in keeping it in a dynamic market that cousin for the cost and quality.



Lupatech S.A. / Unidade Microinox

Rua Dalton Lahm dos Reis, 201 – Distrito Industrial
95112-090 – Caxias do Sul – RS – Brazil

Tel. 55 54 3227-7000 • Fax 55 54 3227 7021
www.lupatech.com.br • luciana.adamatti@microinox.com.br

Products: thermo-injected plastic parts and assembly of sub-sets for the automotive and electronic and electrical industries, instrument panels, bumpers, compensation tanks, consoles, ventilation boxes, wheel box protectors, trunks and fuse box components, radiator and ventilation grilles, air filter casings, battery box sets, security handles, steering column covers, column and sill finishing, rear covers, radiator deflectors, wheel disks and emblems, oil separators, components and sub-sets for printers, flexible command cables for accelerators, gears, handbrakes, hoods openers, fuel cap openers, and oil gauges.

Multiforja S/A Indústria e Comércio

Taboão da Serra/SP

Tel/Fax: 55 11 4788-9200/9222

Products: Steering arms and components, steering sectors, suspension terminals, axles, fifth wheel elements, electrical hardware, gears, equipment, flanges and connections and terminals and suspension pins.

Muri Engenharia Ind. Ltda.

Porto Alegre/RS

Tel/Fax: 55 51 2121-9700/9810

Products: Assembly lines, testing machinery, electrical testing machinery, watertight testing machinery, supervisory equipment, presses.

Musashi do Brasil Ltda.

Igarassu/Pernambuco

Tel/Fax: 55 81 3543-6000/6195

www.musashi.com.br

Products: Motorcycle gear sets, disk brakes, axles and gears.

MWM International Indústria de Motores da América do Sul Ltda. Industrial Units

São Paulo/SP

Tel/Fax: 55 11 3882 3200/3577

Canoas/RS

Tel/Fax: 55 51 3477-8800

www.mwm-international.com.br

Products: Diesel engines from 2.5 to 9.3 liters and 50 to 375 horse power, generators and parts for diesel engines

Nachi Brasil Ltda.

São Paulo/SP

Tel/Fax: 55 11 3284-9844/1751

www.nachi.com.br

Products: Ball bearings.

Nekarth Indústria e Comércio de Peças e Máquinas Ltda.

Osasco/SP

Tel/Fax: 55 11 3601-5388

www.nekarth.com.br

Products: Synchronized rings, forks for clutches, pins.

Nemak Aluminum do Brasil Ltda.

Betim/MG

Tel/Fax: 55 31 2123-8684/8688

www.nemak.com

Products: Headers, transmission boxes, oil casings, intake elbows, header covers.

Neumayer Tekfor Automotive Brasil Ltda.

Jundiaí/SP

Tel/Fax: 55 11 2152-4912/4802

www.neumayer-tekfor.com.br

Products: Fixing and assembly elements, machined parts and forged parts.

Niken Indústria Comércio e Metalúrgica Ltda.

Suzano/SP

Tel/Fax: 55 11 4744-8090/4748-7988

www.niken.com.br

Products: seat levers, levers, hinges, locks, stamped pieces, pedals and supports.

Nino Faróis Industrial e Exportadora de Autopeças Ltda.

Arujá/SP

Tel/Fax: 55 11 4652-1500

www.ninofaróis.com.br

Products: auxiliary headlights and main headlights.

Norfol Indústria de Transformação de Termoplásticos Ltda.

Diadema/SP

Tel/Fax: 55 11 4091-9977/7396

www.norfol.com.br

Products: rain gutters, caps, covers for accelerator, rear lights, bumpers, reflective, third brake lights.

Normatic

Tratamentos Térmicos Ltda.

São José dos Pinhais/PR

Tel/Fax: 55 41 3283-4556/3282-1047

Products: Heat treatments.

Nova Friburgo Comércio e Indústria Ltda.

Nova Friburgo/RJ

Tel/Fax: 55 22 2102-6310/2522-6022

www.drivesol.com

Products: steering columns sets.

Novainjet Indústria e Comércio de Autopeças Ltda.

São Paulo/SP

Tel/Fax: 55 11 6909-4936/6553

www.novainjet.com.br

Products: Latches for hoods, latches, locks for trunks and window lifters.

NSK Brasil Ltda.

São Paulo/SP

Tel/Fax: 55 11 3269-4724/4720

www.nsk.ltd.com.br

Products: Ball bearings, ball spindles and linear sliding blocks.

Obenaus Indústria e Comércio de Molas Ltda.

Pomerode/SC

Tel/Fax: 55 47 3387-8000/8001

www.molasobenaus.com.br

Products: Semi-elliptical springs.

Oetiker do Brasil Ind. e Com. de Elementos Mecânicos Ltda.

Campinas/SP

Tel/Fax: 55 19 3294-3556/3255-3296

Products: Brackets.

Olimpic Indústria de Autopeças Ltda.

São Paulo/SP

Tel/Fax: 55 11 6120-6400/6965-2191

www.olimpic.com.br

Products: Ignition coil, ignition cables, condensators, switches, distribution rotor and distribution cover.

Olimpus Industrial e Comercial Ltda.

São Paulo/SP

Tel/Fax: 55 11 6165-9200/6160-0961

www.olimpus.com.br

Products: Automotive antennas, relays, cables and alarms.

Olsa Brasil

Indústria e Comércio Ltda.

Diadema/SP

Tel: 55 11 4070-7807/4075-4555

www.olsa.com.br

Products: Lights for brakes, license plates, glove boxes, trunks, roofs and side indicator

OMR Componentes

Automotivos Ltda.

Sete Lagoas/MG

Tel/Fax: 55 31 2107-8600/8656

www.sada.com.br

Products: Engine blocks, suspension arms and supports.

Omron Bitron

Componentes Automotivos Ltda.

Itapevi/SP

Tel/Fax: 55 11 4789-8250/8255

www.omronauto.com

Products: Door switches, air conditioning controls, relays, lights controls, electric mirror controls, light rheostat, electric switches.

Orgus Indústria e Comércio Ltda.

Vargem Grande Paulista/SP

Tel/Fax: 55 11 4158-1440/2414

www.orgus.com.br

Products: Headlamp frames, auxiliary headlights, main headlights, lenses and sockets.

Orion S/A

São José dos Campos/SP

Tel/Fax: 55 12 2139-1000/3905-1827

Products: "O" rings, retainers, sheets, rubber mats, miscellaneous insulation and sealants.

Osram do Brasil

Lâmpadas Elétricas Ltda.

Osasco/SP

Tel/Fax: 55 11 3683-7875/3684-7421

www.osram.com.br

Products: brakelight lamps, halogen lamps for headlights, glow lamps for headlights, torpedo lamps, lamps for rear lights, for lights, license plates and



Hortolândia - Powertrain and Electronic Systems



Mauá - Shock Absorbers, Suspension Systems and Cylinder Liners



Amparo - Exhaust Systems



Contagem - Automotive Lighting

Magneti Marelli has been in South America since 1978, when it started manufacturing carburetors in Brazil. It now stands out among the continent's most important auto parts companies due to its highly innovative performance. Its five business divisions are:

- **Powertrain**, responsible for developing and producing electronic monofuel as well as multifuel injection systems, besides gear management systems
- **Shock Absorbers and Suspension Systems** (Cofap), with suspension systems and dampers, cylinder lines and sintered parts
- **Exhaust Systems**
- **Automotive Lighting** (headlights and rear lamps)
- **Electronic Systems**, which develops and produces instrument panels, telematics, body computers and several electronic modules

The group has approximately 6,600 employees, 10 manufacturing facilities (nine in Brazil, one in Argentina), and 5 R&D Centers; making it possible for the development of high technology systems and components for the major automotive companies in the area. It makes the biggest impact on the original equipment manufacturer – which it sends 70% of its products. It also is a leading supplier in the segments of dampers, electronic injections systems (gas and multifuel), suspensions and cylinder lines segments. Its turnover in 2007 was US\$ 1 billion and is set for growth in 2008.

The group is expanding locally due in part to the country's economic growth, but especially because of its aggressive innovation strategies and latest technological advances. All of the units are QS 9000, TS 16949 and ISO 14001 certified by the most important registered centers, as well as having specific certification by major automotive companies that enhances the quality of our products.

Furthermore, it is a pioneer in finding solutions that reduce the environmental impact caused by cars and has been acknowledged by the South American market. The technology SFS® – Software Flexfuel Sensor, launched by Magneti Marelli in the Brazilian market in 2003, is an example: 90% of the 2 million vehicles manufactured in Brazil are equipped with this technology. It allows the car to be filled with the bio-fuel ethanol, made from sugarcane and capable of reducing CO2 emissions by 5%. Several countries in Europe, China and the United States are already studying the potential development of similar technologies.

The South American automotive market, which is characterized by compact and low cylinder vehicles (1.0 to 1.4 L), represents a challenge in terms of development. Not only does it demand comfort and security, but it also cost effectiveness of the final product. Magneti Marelli has managed to see this need and strives to meet it, offering technologies available all around the world in a customized way, and using creativity so as to achieve the lowest possible cost.

MAGNETI MARELLI

Shock Absorbers, Suspension Systems and Cylinder Liners: Magneti Marelli Cofap • Av. Manoel da Nóbrega, 350 – Capuava – 09380-120 – Mauá – SP – Brazil • Tel. 55 11 2144 1131

Exhaust Systems: Magneti Marelli Sistemas Automotivos • Rodovia SP 95 Km 47 Galpão 1 – 13901-908 – Amparo – SP – Brazil • Tel. 55 19 3808 7240

Powertrain: Magneti Marelli Sistemas Automotivos • Av. da Emancipação, 801 – Jd. Sta Rita de Cássia - 13184-906 - Hortolândia - SP - Brazil • Tel. 55 19 2118 6214

Automotive Lighting: Magneti Marelli Sistemas Automotivos • Av. João César de Oliveira, 6261 – Vila Beatriz – 32040-000 – Contagem – MG – Brazil • Tel. 55 31 2129 5161

Electronic Systems: Magneti Marelli Sistemas Automotivos • Av. da Emancipação, 801, Galpão 4 – Jd. Sta. Rita de Cássia – 13183-000 – Hortolândia – SP – Brazil • Tel. 55 19 2118 6424

www.magnetimarelli.com

internal illumination, for reverse light, for panels, for plastic and led panels.

Ouro Fino Indústria e Comércio de Autopeças Ltda.

Ribeirão Pires/SP
Tel/Fax: 55 11 2179-6161/6189
www.ourofino.com.br

Products: Welded sets, stamped parts, injected plastic parts and heat-molded parts.

Paranoá Indústria de Borracha S.A.

Diadema/SP
Tel/Fax: 55 11 4061-6533/4066-6350
www.paranoa.com.br

Products: fuel hoses, radiator hoses, hoses for air conditioning, hoses for hydraulic steering.

Parker Hannifin Indústria e Comércio Ltda.

São Paulo/SP
Tel/Fax: 55 11 3915-8572/8603
www.parker.com.br

Automation Division:

Jacareí/SP
Tel/Fax: 55 12 3954-5144/5262

Products: Single and double action pneumatic cylinders, operating valves, directional valves, auxiliary valves, solenoids valves, manual and pneumatic controls, filters, control and lubricators for pneumatic systems, connections, tubes and hoses.

Filters Division:

São José dos Campos/SP
Tel/Fax: 55 12 4009-3500/3519

Products: Filters for air, oil and lubricant fuels, water separating fuel filters, hydraulic and cooling fluid filters, filters for processes industry and micro-filtering, filters for compressed air and gases purification.

Seals Division:

São Paulo/SP
Tel/Fax: 55 11 3915-8500/8516

Products: "O" rings and molded parts, seals and gaskets for hydraulic and pneumatic systems, machined and extruded precision seals, metal/rubber seals, Teflon seals, electromagnetic armoring (emi) and materials for heat control.

Peguform do Brasil Ltda.

São José dos Pinhais/PR
Tel/Fax: 55 41 2104-4916/4937
www.peguform.com.br

Products: Interior and exterior injection parts, front modules, panels for doors, fenders, bumpers, painted or unpainted mirror casing, assembly services, sequencing, prototyping, product engineering and laboratory.

Pematec Triangel do Brasil Ltda.

São Bernardo do Campo/SP
Tel/Fax: 55 11 4353-7500/7557
www.pematec.com.br

Products: Rings for leather covers for steering wheel, leather covers for seats,

covers for trunks, heat deflectors, water sealing film for doors, door sides, molded cardboard parts, Duratex and cardboard parts, glass wool pre-molded parts, gear lever and sun visors.

Petrac Indústria e Comércio S.A.

São Paulo/SP
Tel/Fax: 55 11 3209-1044
www.petrac.com.br

Products: Disks for sinterized clutches, brake disks and sinterized parts.

Petrobras S/A

Rio de Janeiro/RJ
Tel/Fax: 0800 789001 (SAC)
www.petrobras.com.br

Products: Automotive gas, aviation fuel, diesel, finished lubricant oils and greases, basic lubricant oils, fuel oils, liquid petroleum gas, natural gas.

PG Products Indústria e Comércio de Vidros Ltda.

Barueri/SP
Tel/Fax: 55 11 4617-9322/4702-3472
www.pgproducts.com.br

Products: armored glass.

Philips Eletrônica do Nordeste S.A.

São Paulo/SP
Tel/Fax: 55 11 2125-0635/0580
www.luz.philips.com

Products: conventional lamps, brake light lamps, halogen lamps headlights, lamps for rear lights, for reverse lights and lamps for panels.

Pierburg do Brasil Indústria e Comércio Ltda.

Nova Odessa/SP
Tel/Fax: 55 19 3466-9338/9836
www.grupoks.com.br

Products: water pumps, oil pumps, electric actuator, secondary air pumps, vacuum pumps, throttle housing and solenoid valves.

Pilkington Brasil Ltda.

Caçapava/SP
Tel/Fax: 55 12 3654-2100/2240
www.pilkington.com.br

Products: automotive laminated security glass, tempered, encapsulated, extruded glass, sliding windows, reflective, acoustic, hydrophobic glass, laminates sides, rain sensor, AM/FM antenna, GPS, TV and mobile phone integrated systems.

Pingüim Indústria e Comércio de Radiadores Ltda.

São Paulo/SP
Tel/Fax: 55 11 3856-6461/6473
www.radiadorespinguim.com.br

Products: Honeycombs and radiators.

Pirelli Pneus S.A.

Santo André/SP
Tel/Fax: 55 11 4998-5660/5300
www.pirelli.com.br

Products: Tires for trucks and buses, cars, pick ups, vans, utility vehicles,

motorcycles, bicycles, agricultural and off-road, as well inner tube and protectors.

Plascar Indústria de Componentes Plásticos Ltda.

Jundiaí/SP
Tel/Fax: 55 11 2152-5128/5129
www.plascar.com.br

Industrial Units:

Jundiaí/SP
Tel: 55 11 2152-5300
Varginha/MG
Tel: 55 35 3219-3500
Betim/MG
Tel: 55 31 3539-6300

Products: direction switches, wiper sets, consoles, arm rests, head rests, front grilles, switches, steering wheel column switches, indicating lights, rear lights, license plate lights, window operating mechanisms, instrument panels, side door panels, bumpers, plastic tanks, electric locks for doors, steering wheel.

Plastic Omnium do Brasil Ltda.

São Paulo/SP
Tel/Fax: 55 11 5083-0889/4961

Products: Exterior plastic parts.

Plásticos Silvatrim do Brasil Ltda.

São Bernardo do Campo/SP
Tel/Fax: 55 11 4174-7800/7234
www.silvatrim.com.br

Products: Wheel disks and frames.

Plasticoville Indústria e Comércio de Produtos Plásticos Ltda.

Joinville/SC
Tel/Fax: 55 47 3425-2963
www.plasticoville.com.br

Products: Air ducts, tanks and fuel tanks.

Policon Produtos Elétricos Ltda.

São Paulo/SP
Tel/Fax: 55 11 5685-4410
www.policonchicotes.com.br

Products: battery cables and electric harnesses.

Polimec Indústria e Comércio Ltda.

Hortolândia/SP
Tel/Fax: 55 19 3809-9500/3887-2700

Products: cold forging, machining and tooling.

Polimetri Indústria Metalúrgica Ltda.

Mauá/SP
Tel/Fax: 55 11 4512-6900/6939
www.polimetri.com.br

Products: impact rods, welding for bodywork, chassis and engine, heat deflectors, stamped parts, pedals for clutches, pedals for brakes, casing protectors and supports.

Pradolux Indústria e Comércio Ltda.

Poços de Caldas/MG
Tel/Fax: 55 35 3714-1711/2708
www.pradolux.com.br

Products: main headlights, rear lights, lenses and warning triangles.

Prensas Mahnke Ltda.

São Paulo/SP
Tel/Fax: 55 11 6201-1566/6951-0129

Products: mechanic, hydraulic presses and systems for tool changing.

Prensas Schuler S.A.

Diadema/SP
Tel/Fax: 55 11 4075-8444/4079-2766
www.schuler.com.br

Products: Mechanic and hydraulic presses over 400 tons for metal cutting and shaping.

Pressac do Brasil Ltda.

Barueri/SP
Tel/Fax: 55 11 4196-1998/4191-4728
www.pressac.com

Products: electro mechanic and electronic relays, electronic modules, power distribution modules, latches, locks for hoods and trunks.

Presstécnica

Indústria e Comércio Ltda.

São Bernardo do Campo/SP
Tel/Fax: 55 11 3488-9200/4330-2559
www.presstecnica.com.br

Products: Axles, screws and nuts for wheels, special screws and nuts, forged and machined parts, pins, stud bolts.

Prevent Thierry Brasil Ltda.

Cambui/MG
Tel/Fax: 55 35 3431-9506-9505
www.prevent.si

Products: Seat covers.

Produflex

Indústria de Borrachas Ltda.

Diadema/SP
Tel/Fax: 55 11 4057-9500/4048-2963
www.produflex.com.br

Products: Rubber technical items, rubber mountings, grommets, joints, injection hoses, buffers, mono and bi elastomers profiles with metallic and flocked inserts.

Products Eletrônicos Metaltex Ltda.

São Paulo/SP
Tel/Fax: 55 11 5683-5700/5524-2324

Products: Relays, connectors, programmed controls, switches, sensors, contactors, push button, encoders and invertors.

Proema Automotiva S.A.

São Bernardo do Campo/SP
Tel/Fax: 55 11 4343-1700/8038
www.proema.com.br

Products: Steering columns, cabled steering wheel control, middle axle, pedals.

Progeral Indústria de Artefatos Plásticos Ltda.

Iperó/SP
Tel/Fax: 55 15 3269-8983/3266-1419
www.progeral.com.br

Products: worm screw metallic brackets, for exhausts, for homocinetic and spring type joint.

Protektor Company

Campo Limpo Paulista/SP
Tel/Fax 55 11 4039-8000

Products: Laminated glass and armored glass

PST Indústria Eletrônica da Amazônia Ltda.

Campinas/SP
Tel/Fax: 55 19 3787-6200/6211
www.pst.com.br

Products: Automotive alarms, alarms for motorcycles, alarms for trucks, instrument panels, electric locks, electric windows, satellite vehicle locator, locking mechanisms, electronic antennas, electric window modules, accessories.

Quaker Chemical

Indústria e Comércio Ltda.
Rio de Janeiro/RJ
Tel/Fax: 55 21 3305-1800/1801
www.quakerchem.com

Products: cutting/machining fluids, protection oils, stamping fluid, degreasers, hydraulic oils, oils for heat treatment, demolding fluids, heat and cold laminating oils, fire resistant hydraulic fluids, biodegradable hydraulic fluids, pre-lubes, incremental fluids, pickling inhibitors.

Quinelato Indústria e Comércio Ltda.

Monte Alto/SP
55 16 3244-1095
www.quinelatofreios.com.br

Products: regulators for brake pressure, brake systems repairs, servo gear and fast disk harge valves.

R. Castro & Companhia Ltda.

Diadema/SP
Tel/Fax: 55 11 4066-9660/4067-1130
www.rcastro.com.br

Products: pressure camplates, flat, dented and curved camplates, stamped hardware.

Raco do Brasil Ltda.

São Carlos/SP
Tel/Fax: 55 16 3377-9050/9055
Products: Aluminum tubes.

Radiadores Visconde Ltda.

Guarulhos/SP
Tel/Fax: 55 11 6487-1800
www.visconde.com.br

Products: Radiators, air and oil radiators, heat exchangers, air and oil coolers, condensators, expansion vessel.

Ramberger & Ramberger Ltda.

São Paulo/SP
Tel/Fax: 55 11 6958-5533/0743

Products: Mechanic components and chassis.

Ranalle Componentes Automotivos Ltda.

São Paulo/SP
Tel/Fax: 55 11 6128-9555
www.ranalle.com.br

Products: Pulleys, tensioners.

Rassini-NHK Autopeças Ltda.

São Bernardo do Campo/SP
Tel/Fax: 55 11 4366-9300/4368-0253
www.rassini-nkh.com.br

Products: Helicoidal springs and spring sets for suspension systems

Rayton Ind. S/A

São Paulo/SP
Tel/Fax: 55 11 3868-5555/3871-0905
www.rayton.com.br

Products: Gears, axles, sleeves, bushings, synchronizers, satellite boxes, planetary gear sets, differential spiders, ring gears and pinions.

RCD Comércio e Indústria Ltda.

Porto Feliz/SP
Tel/Fax: 55 15 4009-3277/3232
www.rcd.com.br

Products: Headlamp frames, main headlights, front grilles and lenses.

RCN Indústrias Metalúrgicas S.A.

São Paulo/SP
Tel/Fax: 55 11 6195-9222/9224
www.rcn.com.br

Products: Synchronizer rings and forks, fork gear selectors, aluminum forged parts, brass forged parts.

Redecar Redecorações de Autos Ltda.

São Paulo/SP
Tel/Fax: 55 11 6915-7422/7379
www.redecarrd.com.br

Products: Vacuum seats for buses, exhaust caps, consoles, Vacuum panels for trucks, fenders, vacuum plastic parts.

Refal Indústria e Comércio de Rebites e Rebitadeiras Ltda.

São Paulo/SP
Tel/Fax: 55 11 3871-6460/3611-3505

Products: Washers and clincher, welding pins, clips and equipment for tucker welder.

Rehau Indústria Ltda.

Cotia/SP
Tel/Fax: 55 11 4613-3900/3923

Products: Injection and extrusion plastic parts

Reis Comércio e Indústria Metalúrgica Ltda.

Guarulhos/SP
Tel/Fax: 55 11 6421-4911
www.reismetalurgica.com.br

Products: Fuel pumps, electronic injection, parts for fuel gauges, parts for speedometers.

Remy Automotive Brasil Ltda.

Brusque/SC

Tel/Fax: 55 47 3255-3500/3503
www.remyinc.com.br**Products:** Stars engines, alternator, slingers, bearings for start engines, pinions, brush holders.**Reser Plastic****Indústria de Autopeças Ltda.**

Joinville/SC

Tel/Fax: 55 47 3434-1525
www.reserplastic.com.br**Products:** plastic tanks, expansion tanks.**Resil Indústria e Comércio Ltda.**

Diadema/SP

Tel/Fax: 55 11 2178-8054/8097
www.resil.com.br**Products:** Fire extinguishers, supports for fire extinguishers, tanks for brake air, engine refrigeration ducts.**Resil Minas****Indústria e Comércio Ltda.**

São Joaquim de Bicas/MG

Tel/Fax: 55 31 2105-5200/5303
www.resil.com.br**Products:** Metallic structures for seats, upholstered seats for automobiles, stamped parts.**Retin Indústria e Comércio Ltda.**

São José dos Campos/SP

Tel/Fax: 55 12 3905-5100/5086
www.ricvalvulas.com.br**Products:** Intake valves, outlet valves.**Rhenen do Brasil****Indústria de Springs Ltda.**

Nova Iguaçu/RJ

Tel/Fax: 55 21 2667-4110

Products: spring bundles for bus and truck suspensions**Rhodia Poliamida e Especialidades Ltda.**

São Paulo/SP

Tel/Fax: 55 11 3741-7505/5548-1808
www.rhodia.com.br**Products:** Natural and reinforced, aditivated and colored polyamide 6.6 and 6, pbt, polycetal, polyamide/abs, silicone elastomers, multifilament and high toughness polyamide 6.6 screens**Rieter Automotive do Brasil Artefatos de Fibras Têxteis Ltda.**

São Bernardo do Campo/SP

Tel/Fax: 55 11 2139-1800/4343-5167
www.rieter.com**Products:** Carpets, felt, kest, tar sheets, non-wovens.**Robert Bosch Ltda.****Gas/Power Systems and On-board Electronics/Car Multimedia and Aftermarket Unit**

Campinas/SP

Tel/Fax: 55 19 2103-1954/2600
www.bosch.com.br**Gas Systems Products**

– Full fuel injection systems, pressure and temperature sensors, throttle housing, pressure regulators, canister outlet valves, engine temperature sensors, injection valves, detonation sensors, phase sensors, rotation sensors, electronic control units, fuel tunnels, oxygen sensors, fuel supply modules, fuel pumps, acceleration pedal modules, ignition plastic coils, spark plugs and intake modules.

Power Systems and On-board**Electronics Products** - start engines, alternator, wiper systems, cooling and air conditioning systems, engines for electric windows and rain sensors and lights.**Aftermarket Products** – Full solutions for parts, equipments and services for automotive aftermarket in Latin America including: supply of injection products and components, and electronic and electric ignition, diesel systems, brakes, filters, spark plugs, wipers, comfort electrics, lights and batteries, testing equipment, software and hardware for workshops diagnosis, registered Bosch Service workshops and technical assistance for the Bosch Equipment Service (BTS) testing equipment.**Car Multimedia Products** – Full line of CD Players, speakers, amplifiers and accessories for cars, buses, trucks and also original equipment.**Chassis Brakes Systems/Chassis Control Systems Unit**

Campinas/SP

Tel/Fax: 55 19 3772-5100

Chassis Brakes Systems – Full brake systems, front and rear diskbrakes, drum brakes, boosters and isovacs, master cylinders, brake disks, brake drums, load sensitive valves.**Chassis Control Systems** – Modulation Systems such as Antilock Braking Systems (ABS), Traction Control Systems (TCS), Electronic Stability Program (ESP) and components for brakes systems.**Diesel Systems Unit**

Curitiba/PR

Tel/Fax: 55 41 3341-2525

Products: DG Flex System. injection systems for diesel engines: Common Rail System (CRS), Unit Pump System (UPS), Unit Injector System (UIS), line injection pumps, distributing pumps, nozzle holder sets and components for diesel injection systems.**Gas Systems Unit**

Aratu/Bahia

Tel/Fax: 55 71 2107-4000

Products: spark plugs, tar coils and ignition system components.**Rodagás do Brasil****Sistemas a Gás Ltda.**

São Paulo/SP

Tel/Fax: 55 11 6823-0250/0255
www.rodagas.com.br**Products:** LPG carburizing kit, methane carburizing kit.**Rol Mar Metalúrgica Ltda.**

São Leopoldo/RS

Tel/Fax: 55 51 3589-7000/3592-1298
www.mar-rolamentos.com.br**Products:** Ball bearings, cone roll bearings.**Rosa Maria Cioca – EPP**

São Paulo/SP

Tel/Fax: 55 11 6919-0299
www.retrovex.com.br**Products:** Rearview mirrors, lamps.**Rudolph Usinados de Precisão Ltda.**

Timbó/SC

Tel/Fax: 55 47 3281-2800/2839
www.rudolph.com.br**Products:** Fixation elements, precision machined parts.**Saargumi do Brasil**

São Bernardo do Campo/SP

Tel/Fax: 55 11 4126-9500/9518
www.saargumi.com**Products:** rubber gutters, rubber trim for doors, windows and rubber sealing.**Sabó Indústria e Comércio de Autopeças Ltda.**

São Paulo/SP

Tel/Fax: 55 11 2174-5000/5101
www.sabo.com.br**Products:** Joints, Retainers, hoses and seals**Sada Forjas Ltda.**

Sete Lagoas/MG

Tel/Fax: 55 31 3779-8600/8656

Products: Forged and machined parts, gears, axles, rotor hubs, cylindrical ring gears, supports, flanges, wheel hubs, axle points, bearing rings, gears, trailer hitches, steering link.**Saint-Gobain Abrasivos Ltda.**

Guarulhos/SP

Tel/Fax: 55 11 2138-5347/5355

Products: sandpaper, grinding wheels, cutting and edging disks, super abrasives.**Saint-Gobain Glass S.A. - Divisão Sekurit**

Mauá/SP

Tel/Fax: 55 11 2196-9800/4514-1646
www.saint-gobain-sekurit.com.br**Products:** Automotive glass, windshield laminates, glass for doors, side and rear windows, encapsulated glass, extruded glass, pre-assembled windows, tempered glass**Sambel Indústria e Comércio de Eixos Ltda.**

Barueri/SP

Tel/Fax: 55 11 4198-3085
www.sambel.com.br**Products:** Axle valve commands**Sambercamp****Indústria de Metal e Plástico S.A.**

São Bernardo do Campo/SP

Tel/Fax: 55 11 4178-1111
www.sambercamp.com.br



Maxion Sistemas Automotivos makes part of lochpe-Maxion Group. Source of the leading truck, bus, car and tractor manufacturers. Exports a significant part of the production to over 40 countries world wide. Plant built on an area of 90,000m² in a total area of 380,000m². Focused operations on two automotive segments:

1) **Steel wheels for tube and tubeless tires for trucks and buses, and steel wheels for tractors and off-road vehicles.** The company is one of the largest manufacturers of wheels and demountable rims in Latin America. Cold jerking and rolling processes are used in manufacturing, as well as the most advanced E-COAT/KTL electrophoretic coating system and Powder coating using lead free paint. Light, strength and perfectly balanced wheels meet international specifications drawn up by the Brazilian Association of Technical Norms (ABNT), the Latin American Tire and Rim Association (ALAPA), the Tire and Rim Association (TRA) and the European Tire and Rim Technical Organization (ETRTO).

2) **Side members, crossmembers, stamped components and chassis for commercial vehicles, trucks, buses and passenger cars with 0.8 to 12 mm thickness and length of up to 12 meters.** One of the largest stamping capacities in South America, with over 70 stamping machines from 15 to 5,200 tons. To manufacture assembled components Maxion uses robot or manual MIG/MAG welding, submerged arc welding, projection and spot welding. In painted components E-COAT/KTL, Top-coat and Powder coating guarantee high anti-corrosive protection. Maxion uses CAD 3D modeling and CAE, with modern stampability and machining simulation software and CAM, and CNC three axle machining.

Quality management meeting the most rigorous international norms, certified by ISO 9001, ISO TS 16949 and OHSAS 18001 Bureau Veritas Quality International (BVQI).

Environment conservation is a priority, with policies aiming waste and industrial residues reduction during the production process, besides quantity of raw material, water and energy being used. The company is ISO 14000 certified.

Products: U Clamps U, spring clamps, suspension pull rods, injected plastic parts.

Sampel Indústria e Comércio de Peças Automotivas Ltda.

Itaquaquecetuba/SP
Tel/Fax: 55 11 4646-8100/4645-1404
www.sampel.com.br

Products: Buffers, bushings, rubber pads, supports, supports for exhaust mufflers.

SAS Automotivo do Brasil Ltda.

São José dos Pinhais/PR
Tel/Fax: 55 21 2106-4856/4877
www.sas-automotive.com

Products: side panels.

SBU – Sociedade Brasileira de Usinagens Ltda.

São Paulo/SP
Tel/Fax: 55 11 5588-4499
www.sbu.com.br

Products: Brass connections.

Schaeffler Brasil Ltda.

Sorocaba/SP
Tel/Fax: 55 15 3335-1500 /1960
www.schaeffler.com.br

Products: Hydraulic tappet, floating rocker arms, hydraulic chain tensioners, pulleys, variable valve control systems, valve operating control systems, clutches, bi-mass steering wheels, operating systems, components for CVT transmission, coupling internal systems, universal joints, rose joints, bearings (balls, needles, cone rolls, wheels, suspension, ratchet, waterpump) etc., as well as components for heavy industry, railway, consumer goods and aerospace segment.

Scherdel do Brasil Ltda.

Sorocaba/SP
Tel/Fax: 55 15 3235-6700/6715
www.scherdel.com.br

Products: metallic frames for seats.

Schrader Bridgeport Brasil Ltda.

Jacareí/SP
Tel/Fax: 55 12 3954-6500/3951-4653
www.schrader.com.br

Products: Gauges, valve extensions, hydraulic jacks, valve core, valves for air conditioning, valves for air tubes, valves for electronic injection, valves for tires, valves for tanks.

Schulz S.A.

Joinville/SC
Tel/Fax: 55 47 3451-6210/6052
www.schulz.com.br

Products: Machined, painted and assembled gray and nodular cast iron parts, general supports, casings for axles, transmissions and differentials, caps and supports for engines, brake components, wheel hubs.

Schunk do Brasil Sinterizados e Eletrografites Ltda.

Cotia/SP
Tel/Fax: 4613-3200/4702-3253
www.schunk.com.br

Products: Bronze and sinterized bushings, carbon brushes for alternators, start engines and electric engines, sinterized iron sliding blocks for shock absorbers spindles, sinterized parts.

Schwanzler Tecnologia em Plástico Reforçado Ltda.

Mafrá/SC
Tel/Fax: 55 47 3642-3020/3522

Products: Bumpers, spoilers, aerofoil, side skirts, special parts

Scórprios Indústria Metalúrgica Ltda.

São Caetano do Sul/SP
Tel/Fax: 55 11 4224-9600/9602
www.scorprios.com.br

Products: Welded sets for bodywork, chassis and engines, hardware for stamping, stamped parts, parts for motorcycles, machined parts.

Scórprios Usinagem Ltda.

Diadema/SP
Tel/Fax: 55 11 4091-9947/8590
www.scorprios.com.br

Products: Cooling system, sets, sub-sets and machined parts for the automotive industry.

Scórprios da Amazônia Ltda.

Manaus/AM
Tel/Fax: 55 92 3615-4900/4700
www.scorprios.com.br

Products: Stamping processes, welding, machining, superficial finishing and assembly.

Scorro Indústria e Comércio Ltda.

Mairinque/SP
Tel/Fax: 55 11 4718-2088/1033
www.scorro.com.br

Products: Alloy wheels.

Seeber Fastplas Ltda.

Diadema/SP
Tel/Fax: 55 11 4092-8400/4091-7466
www.fastplas.com.br

Products: Intake elbows, distributors, air ducts, spoilers and aerofoil, hoses, door sides, polyurethane bumpers, thermoplastic bumpers, fenders, internal lining.

Selco Vedações Dinâmicas Ltda.

São Bernardo do Campo /SP
Tel/Fax: 55 11 4176-4000/4178-4492
www.selcoved.com.br

Products: Roller bodies.

Senior do Brasil Ltda.

Araçariçuama/SP
Tel/Fax: 55 11 4136-6400/1001
www.flexonics.com

Products: Expansion joints, stainless steel flexible tubes.

Sensata Technologies Sensores e Controles do Brasil Ltda.

Campinas/SP
Tel/Fax: 55 19 3754-1122/3251-8144
www.sensata.com

Products: Thermal protector for refrigeration compressors, starting relays, pressure sensors, pressostates for air conditioners and for hydraulic steering, thermostats, pressure transducer.

Seva Engenharia Eletrônica S.A.

Contagem/MG
Tel/Fax: 55 31 3211-1000/1010
www.seva.com.br

Products: Diverter switch for Natural Gas Vehicle, flow controller, digital electronic chronotachograph, emulators, satellite vehicle locator, advance variator.

Shell Brasil S/A

Rio de Janeiro/RJ
Tel: 55 21 0800 78-1616 (SAC)
www.shell.com.br

Products: Automotive, industrial, aviation and fuel lubricants.

Siemens VDO Automotive Ltda.

Guarulhos/SP
Tel/Fax: 55 11 6423-3523/6421-3736
www.siemensvdo.com.br

Products: Cockpits, instruments panels, air controls, tachographs, tire gauges, audio and multimedia systems, fuel supply systems, air intake modules, engine actuators, emission managers, sensors, immobilization systems, vehicle security systems, electric controls, electric engines, fleet managers and satellite vehicle locators.

Sifco S.A.

Jundiaí/SP
Tel/Fax: 55 11 4588-1582/4526-1153
www.sifco.com.br

Products: Assembled front axles, axle beams, axle sleeves, connection arms, levers, connection rods, covers for connection rods, ring gears, pinions, semi-axles, gears, rings, transmission axles, crankshafts, axle control valve, front axles, gears, forged parts, axle end, semi-axles, connection rods, supports, wheel hubs, flanges, bearings and connections for conveyer belts.

Sila do Brasil Ltda.

Contagem/MG
Tel/Fax: 55 31 2191-3400/3401
www.silabrasil.com

Products: Cables for hoods, controls, clutches, brakes, cable gear control.

Silbor Indústria e Comércio Ltda.

São Bernardo do Campo/SP
Tel/Fax: 55 11 2174.6900/4392-2585
www.silbor.com.br

Products: Pressed, injection and extruded rubber technical instruments, rubber sealing ring, rubber bushings, air ducts, hoses, rubber buffers, insulating bushing,



PROEMA AUTOMOTIVA S.A., an automotive technology company now offering its products, engineering and development services in the world's leading producer countries.

PROEMA AUTOMOTIVA is installed in a total area of 264,000m², 67,000m² of which are built on, with eleven business units and Technical and Commercial Development offices in Italy and Argentina.

PROEMA AUTOMOTIVA, either directly or through associated or controlled companies operates in various productive sectors, such as: Stamping, Plastic Injection, Aluminum and Zamac Casting, Machining, Push-Pull cables, Assembly of sets and systems, and it also has Physics, Chemical Metallographic, Metrological and Rig Testing Laboratories.

Products

- External Gear Command Systems
- Steering Column Systems and Intermediary Columns
- Machined Pieces and Sets for engines, gears, and suspensions
- Pedals and various sets for motorcycles

Main clients

- | | | |
|---------|-----------|----------|
| • FIAT | • GM | • VW |
| • HONDA | • DAIMLER | • TOYOTA |
| • IVECO | • FORD | |

Quality

- ISO TS 16949
- ISO 14001



Proema Automotiva S.A.

Av. Humberto de Alencar Castello Branco, 860 - Vila Rosa
09850-300 – São Bernardo do Campo – SP – Brazil

Tel.(5511) 4343-1701 • Fax.(5511) 4343-8188
www.proema.com • export@proema.com

headlights and lights insulator, and round trims for bumpers, rubber parts, rubber-metal parts, solid rubber profiles.

Simoldes Plásticos Indústria Ltda.
Caçapava/SP
Tel/Fax: 55 12 3654-1566/1567
www.simoldesplasticos.com.br
Products: Plastic injection parts

Systems de Comandos Mecânicos – S.C.M. Indústria e Comércio Ltda.
Sete Lagoas/MG
Tel/Fax: 55 31 2107-4100/4168
www.imamdo brasil.com.br
Products: Handbrake levers, battery boxes, pedal sets, hoses, metallic structure for instrument panels, pulleys, supports for electronic command units, trays for instrument panels.

SKF do Brasil Ltda.
Barueri/SP
Tel/Fax: 55 11 0800 141152
4619-9100/9199
www.skf.com.br
Products: Angular contact double ball bearings for clutches, balls, cone rolls.

SM Systems Modulares Ltda.
Taubaté/SP
Tel/Fax: 55 12 3609-9400/3681-1525
Products: front axles, rear axles.

SMB Automotive Ltda.
Guarulhos/SP
Tel/Fax: 55 11 6405-4848:6402-1874
www.smbauto.com.br
Products: Exhaust elbows, axle sleeves, supports for air conditioning and hydraulic steering

SNR Rolamentos do Brasil
Fazenda Iguaçú/PR
Tel/Fax: 55 41 3627-8000/8080
Products: Double ball wheel bearings, double cone rolls wheel bearings, McPherson front suspension bearings.

Sodecia América do Sul Participações Ltda.
São Paulo/SP
Tel/Fax: 55 11 3785-8800/3782-0165
Products: structural parts for bodywork, welded sets, side protection rods, supports for instrument panels, components for suspensions.

Sofape S.A.
Guarulhos/SP
Tel/Fax: 55 11 2145-5700
www.tecfil.com.br
Products: Air, fuel, oil filters.

Sogefi Filtration do Brasil Ltda.
São Bernardo do Campo/SP
Tel/Fax: 55 11 4341-2411/2500
www.sogefi.com.br
Products: Air filters, fuel filters, oil filters, activated carbon filter and parts for filters.

Soplast Plásticos Soprados Ltda.
São Bernardo do Campo/SP
Tel/Fax: 55 11 4341-3300/6273
www.soplast.ind.br

Products: Tubes, plastic fuel tanks sets, air circulation ducts, wiper tanks, suspension exhaust caps, blown plastic air circulation boxes, air ducts, spoilers and aerofoil

Spheros Webasto Bus Products
Caxias do Sul/RS
Tel/Fax: 55 54 2101-5700/5747
Products: Air conditioning for buses, vans, micro and mini buses

Stabilus Ltda.
Itajubá/MG
Tel/Fax: 55 35 3629-5000/5005
www.stabilus.com.br
Products: Gas springs

Stamptec Indústria e Comércio de Peças Estampadas Ltda.
São Paulo/SP
Tel/Fax: 55 11 6703-8911/8930
www.stamptec.com.br
Products: Brackets, camplates, flanges, supports.

Stymer + Bienz do Brasil Ltda.
São José dos Pinhas/PR
Tel/Fax: 55 41 3381-5473/3381-5489
www.stymer-bienz.ch
Products: stamped parts.

Stola do Brasil Ltda.
Belo Horizonte/MG
Tel/Fax: 55 31 3439-7000/7005
www.stola.it
Products: Product engineering, stamping, manufacture of bodies and welded sets.

Sueme Metalúrgica Ltda.
São Bernardo do Campo/SP
Tel/Fax: 55 11 4353-2244/2250
www.sueme.com.br
Products: light and medium stamped parts, components for door joints, stamped, welded and assembled sets, levers for hand brakes, synchronizing ring switch, hinges, door checks, pedals for gears

Sulbras Moldes e Plásticos Ltda.
Caxias do Sul/RS
Tel/Fax: 55 54 2101-1800/1830
Products: Air deflectors, turbines and ventilators, items for fuel pumps, metal injected parts, thermoplastic rubber injected parts, plastic components for buses and trucks air circulation, components for air conditioners, air circulation flaps, air distribution boxes.

Sulcarbon Indústria e Comércio de Peças Sinterizadas Ltda.
Porto Alegre/RS
Tel/Fax: 55 51 3374-5000
www.sulcarbon.com.br
Products: Bushings, carbon brushes for alternators and start engines.

Sulplast Fibra de Vidro e Termoplástico Ltda.
Rio Claro/SP
Tel/Fax: 55 19 3535-6550/3527-0910
Products: Bumpers, grilles, fenders, sun visor, spoiler, acoustic insulators, instrument panels, radiator deflector, and caps for batteries, linings and external parts, hoods for agricultural machines.

Sultécnica Indústria Mecânica Ltda.
Cachoeirinha/RS
Tel/Fax: 55 51 3439-1905/1906
www.sultecnica.com.br
Products: Machined parts, flow regulator for hydraulic pumps, caps for hydraulic steering.

Sumidenso do Brasil Indústrias Elétricas Ltda.
São Paulo/SP
Tel/Fax: 55 11 5584-2300/2339
Products: Harnesses.

Suzano Petroquímica S/A
São Paulo/SP
Tel/Fax: 55 11 3345-5900
Products: polypropylene resins

Suspensys Sistemas Automotivos Ltda.
Caxias do Sul/RS
Tel/Fax: 55 54 3209-3000/3102
Products: Suspension systems for commercial vehicles, axles and axle beams, hubs, drums and aftermarket parts.

Takata-Petri S.A.
Jundiaí/SP
Tel/Fax: 55 11 4585-3700/3757
www.takata-petri.com
Products: Horns, consoles, arm rests, gear shift levers, door sides, steering wheels, airbags, seatbelts, plastic injected parts.

Tankauto do Brasil Indústria e Comércio de Auto Parts Ltda.
Itaquaquecetuba/SP
Tel/Fax: 55 11 4645-1588
www.tankauto.hpg.com.br
Products: Fuel tanks.

Tapetes São Carlos Ltda.
São Carlos/SP
Tel/Fax: 55 16 3362-4000/3372-1922
Products: Felt for thermal and acoustic isolation, internal carpets and external automotive parts, natural fiber and synthetic pads for structural application, flat plates and heat-formed parts.

Taranto Comercial Imdoors Dora e Exdoors Dora Ltda.
São Paulo/SP
Tel/Fax: 55 11 3901-9094/3903-6888
www.taranto.com.br
Products: Joints for engine and retainers.



Founded in 1958, SIFCO is a manufacturer of forged components serving several segments of the Brazilian and international automotive industry. Its participation on the export market represents a significant portion of the company's business.

SIFCO is a member of Grupo Brasil with two plants in Brazil and an affiliated company in the USA, complying with the most comprehensive requirements for product quality and environmental conservation.

SIFCO's largest plant, located in Jundiaí, in the State of São Paulo, Brazil, covers a built on area of 59,432 m², on a total area of 136,984 m², housing the medium and light forging lines. It is equipped with hammers from 5,000 lbs to 16,000 lbs, 5", 6" and 7 1/2" up-setters and presses from 600 tons to 4,000 tons, as well as the die shop, machining and assembly line, the chemical, metallographic and dynamic labs, the engineering departments and head offices.

SIFCO's heavy forging plant is located in Campinas, Brazil, covering a built on area of 10,902 m², on a total area of 91,808 m². It is equipped with Digep 32 TM and Beché 40 TM hammers and presses from 4,000 tons to 6,300 ton.

The affiliated company, Westport Axle Corporation, located in Louisville, KY, USA, has a built on area of 12,202 m². Westport Axle is responsible for all steering axle module assembly, warehousing and

distribution of all products supplied to the North American market, including the Just-In-Time supply and sequential delivery of components for the automotive industry.

In order to exceed all quality, value, safety, delivery and service expectations, SIFCO has been developing a continuous program off investment in technology and has obtained ISO 9001:2000, ISO/TS16949:2002 and ISO 14001 certifications.

Main products: fully dressed axle (with hub, drum, brakes and tie rod with toe-in adjustment), I Beams, knuckles, steering, link and pitman arms, crankshafts, camshafts, connecting rods, gears, transmission axles, hubs, rings, crowns and pinions, axle shafts, segments, rollers and links.

Applications: passenger cars, light commercial vehicles, trucks, buses, tractors and motorcycles.

Markets: North and South America, Europe and Asia.

Main Customers: DaimlerChrysler, Volkswagens, Ford, Volvo, Scania, Iveco, DAF, General Motors, Eaton, Valtra, Caterpillar, Dana, ArvinMeritor, ZF, Albion, Axle Alliance, Workhorse.



Sifco S/A

Avenida São Paulo, 361
13202-610 – Jundiaí – SP – Brazil

Tel. 55 11 4588 1582 • Fax 55 11 4526 1152
www.sifco.com.br • sifcvp@sifco.com.br



TCA – Tecnologia em Componentes Automotivos S.A.

São Paulo/SP
Tel/Fax: 55 11 5041-9992/5042-2068
www.tcasite.com

Products: Electric harnesses.

**Tec Mecanic
Mecânica de Precisão Ltda.**

São Paulo/SP
Tel/Fax: 55 11 5524-3474/3042
www.tecmecanic.com.br

Products: Fuel pumps, ignition cables, steering boxes, switches, homocinetic sets, ignition modules, machined parts, sensors.

Técnica Industrial TIPH S.A.

Bragança Paulista/SP
Tel/Fax: 55 11 4035-7400/7410
www.tiph.com.br

Products: Steering arms, satellite boxes, differential spiders, wheel hubs, gears, planetary gear sets, satellite gears, forged parts, cast parts, semi-axles.

Tecnocurva Indústria de Peças Automobilísticas Ltda.

Mogi das Cruzes/SP
Tel/Fax: 55 11 4723-5000/5001
www.tecnocurva.com.br

Products: Curved, welded, stamped and machined tubing.

Tecnofibras S.A.

Joinville/SC
Tel/Fax: 55 47 3441-0700/0792
www.tecnofibras.com.br

Products: Hoods, bumpers, hoses, grilles, sun visors and mud flaps for trucks, hoods, sides mud flaps for tractors, hoods, sides and mud flaps for harvesters.

Tecnotubo Indústria de Peças Tubulares Ltda.

São Paulo/SP
Tel/Fax: 55 11 6523-9100/6521-6162

Products: Tubular parts and sets.

**Tecnofluor
Indústria e Comércio Ltda.**

Cotia/SP
Tel/Fax: 55 11 4243-2201/4148-5429
www.tecnofluor.com.br

Products: Sealing rings, rings for shock absorbers.

Tecnoperfil Taurus Ltda.

São Bernardo do Campo/SP
Tel/Fax: 55 11 2199-5300/4341-5429

Products: Rings for radiator blowers, window gutters, wheel disks, stamped parts, supports for fuel tanks.

**Tecnoplast
Indústria e Comércio Ltda.**

São Paulo/SP
Tel/Fax: 55 11 6694-9888/6693-6812
www.tecnoplast.com.br

Products: Plastic injected and molded parts.

Tecnotubo Indústria de Peças Tubulares Ltda.

São Paulo/SP
Tel/Fax: 55 11 6523-9104/6521-6162
www.tecnotubo.com.br

Products: Welded tubular parts.

Teksid do Brasil Ltda.

Betim/MG
Tel/Fax: 55 31 2123-8111/8454
www.teksid.com.br

Products: Engine blocks and headers, crankshaft gears, valve command trees, brake disks and drums, wheel hubs, outlet catch plates, casings, axle points, bedplates, yokes, steering motors.

Tenneco Automotive do Brasil Ltda.

Mogi Mirim/SP
Tel/Fax: 55 19 3805-7000/7066
www.sa-tenneco-automotive.com

Products: Shock absorbers, rubber for shock absorbers, bushings, automotive catalytic converters, rubber pads, exhausts, silencers, anti-vibration sprockets.

Terbraz Industrial Ltda.

Diadema/SP
Tel/Fax: 55 11 4053-3600/4048-2950
www.terbraz.com.br

Products: Elastic rings, spiral springs, stamped parts.

Termicom Indústria e Comércio de Terminais e Conexões Mecânicas Ltda.

Diadema/SP
Tel/Fax: 55 11 4048-1730/4056-8308
www.termicom.com.br

Products: Axle ball and socket joints, radial joints.

Termolite Indústria e Comércio Ltda.

Belford Roxo/RJ
Tel/Fax: 55 21 2651-1120/2751-0614
www.termolite.com.br

Products: Clutch linings.

Thermoid S.A. Materiais de Fricção

Salto/SP
Tel/Fax: 55 11 4028-9950/9962
www.thermoid.com.br

Products: Friction material.

Texfyt Indústria e Comércio Ltda.

Santa Bárbara D'oeste/SP
Tel/Fax: 55 19 3458-1423/1433
www.texfyt.com.br

Products: Non-wovens and technical fabrics for internal finishing of vehicles.

Thyssenkrupp Automotive Systems

São Bernardo do Campo/SP
Tel/Fax: 55 11 2172-6000/6006
www.thyssenkrupp.com

Products: Various automotive systems.

Thyssenkrupp Bilstein Brasil Molas e Componentes de Suspensão Ltda.

São Paulo/SP
Tel/Fax: 55 11 6332-2448/2464
www.tkbilstein.com.br

Products: Helicoidal springs, spring sets, stabilizer bars, torsion bars, leaf springs.

**Thyssenkrupp Metalcutting
Brasil Ltda.**

Diadema/SP
Tel/Fax: 55 11 4075-7445/4075-7452

Products: Machining centers, special machinery, retrofitting and services.

**Thyssenkrupp Metalúrgica
Campo Limpo Ltda.**

Campo Limpo Paulista/SP
Tel/Fax: 55 11 4039-9000/9988
www.thyssenkrupp-metalurgica.com

Products: Crankshaft gears, casting and machined engine components, connecting rods, piston heads, connecting rod covers, ring gears, wheel hubs, axle valve commands, front axles, gears, forged parts, pinions, shaft ends, semi-axles.

**Thyssenkrupp Metalúrgica
Santa Luzia Ltda.**

Santa Luiza/MG
Tel/Fax: 55 31 3649-5006/5102
www.thyssenkrupp-metalurgica.com

Products: Connecting rods, axle sleeves, shaft ends, supports, crankshaft gears.

Thyssenkrupp Presta do Brasil Ltda.

São José dos Pinhais/PR
Tel/Fax: 55 41 2106-4793/4822
www.thyssenkrupp.com

Products: Steering boxes, steering columns.

TI Brasil Indústria e Comércio Ltda.

Fluid Carrying Systems Division
São José dos Campos/SP
Tel/Fax: 55 12 3924-7060/7022
www.tiautomotive.com

Products: Fluid carrying systems, metallic and plastic tubing (multi-layered) applied to brake, fuel, power steering and air conditioning systems, as well as fast coupling connectors.

Fuel Systems Division

Caçapava/SP
Tel/Fax: 55 12 3654-9000/3653-4244

Products: Storage and distribution fuel systems, including multi-layered plastic tanks, filling tubes, level sensors, modules and fuel pumps.

**Timken do Brasil
Comércio e Indústria Ltda.**

São Paulo/SP
Tel/Fax: 55 11 5187-9200/5181-0379
www.timken.com

Products: cone roll bearings, cone ring bearings, steering columns, bearings cones, differential spiders for universal joints, steel precision components.

TMD Friction do Brasil S.A.

Indaiatuba/SP
Tel/Fax: 55 19 3894-9772/3875-7514
www.tmdfriction.com.br

Products: Brake pads, disk brake pads, disk brake pads for motorcycles.

**Tormep Tornearia
Mecânica de Precisão Ltda.**

Campinas/SP
Tel/Fax: 55 19 3772-3100/3118
www.tormep.com.br

Products: Axles, bleeding screws, machined parts.

Toro Indústria e Comércio Ltda.

Diadema/SP
Tel/Fax: 55 11 4055-7810/7867
www.toro.com.br

Products: vibration shock absorbers, elastomers, engine encapsulation, polyurethane foam for acoustic isolation, felts, dash isolators, floor isolators, hood isolators, thermo-acoustic isolators, isolation and finishing acoustic pads, package holder, shelves, internal finishing, molded roofs.

Tower Automotive do Brasil S.A.

Arujá/SP
Tel/Fax: 55 11 4654-7500/7570
www.towerautomotive.com

Products: metallic frames for seats, floors, suspension arms, wheel boxes, oil flywheel, welded sets, side part for chassis, bumpers, stamped parts, supports, roofs, instrument panel transverse pieces, suspension transverse pieces.

**Transtechnology Brasil
Indústria e Comércio Ltda.**

Diadema/SP
Tel/Fax: 55 11 3215-4700/4755
www.ttb.com.br

Products: Braces, retention rings, elastic rings, rings, pressure camplates, flat, dented and curved camplates, clamps, spring retainers, stamped parts, elastic pins, nuts.

**Trefilpeças Peças Tubulares de
Precisão Ltda.**

Guarulhos/SP
Tel/Fax: 55 11 2147-7000/7001
www.mercantetubos.com.br

Products: tubular parts, drawn tubes.

**Trelleborg Automotive do Brasil
Indústria e Comércio
de Auto Peças Ltda.**

Guarulhos/SP
Tel/Fax: 55 11 2147-5762/5893
www.trelleborg.com

Products: Anti-vibrators, rubber buffers, rubber bushings, rubber pads, hoses, brake hoses, hoses for power steering.

Traves do Brasil Ltda.

Quatro Barras/PR
Tel/Fax: 55 41 3671-8500/8555
www.traves.fr

Products: head rests, package holder, carpeted mats.

**Trico Latino Americana
do Brasil Ltda.**

Jacareí/SP
Tel/Fax: 55 12 3954-6524/3951-6006
www.tricoproducts.com

Products: wiper mechanisms.

Trimtec Ltda.

Caçapava/SP
Tel/Fax: 55 12 3654-4100/4101

Products: Injection and molded door panels, package holder, sun visor, columns.

**Truck Bus Indústria e Comércio
de Auto Peças Ltda.**

Diadema/SP
Tel/Fax: 55 11 4066-7040/1834
www.tbush.com.br

Products: Sealing rings, joints for headers.

TRW Automotive Ltda.

Limeira/SP
Tel/fax: 55 19 3404-1100/1499
www.trw.com.br

Products: Passive and active security systems for vehicles, mechanic, hydraulic, electric steering systems, brake systems, ABS, suspension systems, suspension arms, seatbelts, airbags, steering wheel, steering bars, engine valves, chassis modules, radar systems, tire pressure monitoring systems, electronic systems, air conditioning controls, molding and injection instrument panels for motorcycles, master cylinders, wheel cylinders, worm column, air compressor forbrakes, wiper sets, ratchet, brake disks, fluid for brakes, drum brakes, hydraulic brakes, light switches, indicator switches, switches, oil pressure switches, brake light switches, reverse light switches, indicating lights, rear lights, license plate lights, plastic injected parts, plastic tanks, servo brakes, relief valves, valves for engine.

TS Tech do Brasil Ltda.

Leme/SP
Tel.: 55 19 3573-4100/4101
www.tsstech.co.jp

Products: Upholstered seats for automobiles, side panels, side lining for doors.

**Tubocerto
Indústria de Trefilados Ltda.**

Arujá/SP
Tel/Fax: 55 11 2147-4242/4240
www.tubocerto.com.br

Products: Bushings, spacers, drawn tubes.

Tubofil Trefilação S/A

Guarulhos/SP
Tel/Fax: 55 11 6436-3600/3620/3630
Products: carbon steel tubular drawn parts and tubes.

**Tubo Parts
Indústria e Comércio Ltda.**

São Paulo/SP
Tel/Fax: 55 11 6721-1888/1997
www.tubopecas.com.br

Products: fuel tanks nozzles, exhausts, tubular parts, silencers, pull rods for brakes, automotive tubes.

Tuper S.A. - Divisão Escapamentos

São Bento do Sul/SC
Tel/Fax: 55 47 3631-5000/5050
www.tuper.com.br

Products: Exhaust systems, exhausts, silencers, steel tubes.

Tupy Fundições Ltda.

Joinville/SC
Tel/Fax: 55 47 4009-8231/8295
www.tupy.com.br

Products: Blocks and headers for engines, differential boxes, parts for brake systems, brake calipers, bearing covers, transmission casings, suspension and steering, flexible iron connections, exhaust collector, wheel hubs, brake disks, gearing journals, supports for brakes, brake drums, crankshaft gears.

TWE Espumas Ltda.

São Bernardo do Campo/SP
Tel/Fax: 55 11 4390-4500/4341-4900
www.woodbridggroup.com

Products: Molded foams for automotive seat, structural foams, foams for impact absorption.

**TWB do Brasil
Indústria e Comércio Ltda.**

São Bernardo do Campo/SP
Tel/Fax: 55 11 4104-3444/3443
www.twb-brasil.com.br

Products: Rear protection, base plates for modules doors.

Twinglass Vidros Ltda.

Guarulhos/SP
Tel/Fax: 55 11 2105-3100/6412-4238
www.thermoglass.com.br

Products: laminates windshields.

Tyco Electronics Brasil Ltda.

São Paulo/SP
Tel/Fax: 55 11 2103-6042/6200
www.tycoelectronics.com

Products: Connectors; terminals, relays, cables, thermal contracting, electric controls, customized electronic modules, protection circuits, sensors.

Uliana Indústria Metalúrgica Ltda.

Suzano/SP
Tel/Fax: 55 11 4745-9000/4748-0090
www.uliana.com.br

Products: stamped parts.

Umicore Brasil Ltda.

Americana/SP
Tel/Fax: 55 19 3471-4000/1493
www.unicore.com

Products: Catalysts for automobiles, motorcycles and trucks

**Unibombas Indústria e Comércio
de Autopeças Ltda.**

São Paulo/SP
Tel/Fax: 55 11 5571-8000/5539-6028
www.unibombas.com

Products: Water pumps, oil pumps, water pump repairs, seals for water pumps.

Unifilter Indústria e Comércio de Filtros Ltda.

Barueri/SP
Tel/Fax: 55 11 4198-2225
www.unifilter.com.br

Products: Air and oil filters.

Unipac Indústria e Comércio Ltda.

Barueri/SP
Tel/Fax: 55 11 4166-4260/4193-2326
www.unipac.com.br

Products: Air ducts, fenders, rubber parts, injected parts, bed cover, fuel tanks, expansion tanks, valves for tanks.

Unipoli Embalagens Plásticas Especiais Ltda.

Diadema/SP
Tel/Fax: 55 11 4053 3066 /4054 4456

Products: Special packaging

Universal Indústria Metalúrgica Ltda.

Guarulhos/SP
Tel/Fax: 55 11 6465-6060/6050
www.universalautomotive.com.br

Products: Cylinders with switches for vehicles, latches, handles, window lifters.

Urepol Polímeros Ltda.

Guarulhos/SP
Tel/Fax: 55 11 6412-0404/0385
www.urepol.com.br

Products: Buffers for suspensions.

Usinas Siderúrgicas de Minas Gerais S.A. - Usiminas

Belo Horizonte/MG
Tel/Fax: 55 31 3499-8000/8899
www.usiminas.com.br

Products: Lined and unlined laminates, hot laminates, cold laminates, thick sheets, electro galvanized parts, heat immersion galvanized parts, steel processed products.

Usiparts S.A. Sistemas Automotivos

São Paulo/SP
Tel/Fax: 55 11 5591-5301/5300
www.usiparts.com.br

Products: small, medium and large stamped parts; welded sets, assembly for bodies /cabs, e-coat painting, final painting for full bodies /cabs and final assembly, floors, hoods, bodyworks, bumpers, fenders, stamped parts, doors, roofs, suspension transverse pieces.

V&M do Brasil S.A.

Belo Horizonte/MG
Tel/Fax: 55 31 3328-2121/3333-4471
www.vmtubes.com.br

Products: Seamless steel tubes for oil and gas, automotive and industry sectors.

Valeo Sistemas Automotivos Ltda.

São Paulo/SP
Tel/Fax: 55 11 3759-8788/8789
www.valeo.com.br

Moto Thermal and Air Conditioning Division

Itatiba/SP
Tel.: 55 11 4534-8500

Light Systems Division

São Paulo/SP - Tel: 55 11 5613-1311

Cleaning systems Division

Campinas/SP - Tel: 55 19 3322-3000

Clutch Division

Campinas/SP - Tel: 55 19 3322-3000

Friction Materials Division

Campinas/SP - Tel: 55 19 3322-3000

Security Systems Division

Guarulhos/SP - Tel: 55 11 2138-3111

Electric Systems Division

Campinas/SP - Tel: 55 19 3322-3000

Switching and Detection Division

São Paulo/SP - Tel: 55 11 5613-1311

Engine Management Systems Division

Campinas/SP - Tel: 55 19 3322-3000

Valeo Services Division

São Bernardo do Campo/SP
Tel: 55 11 4393-3300

Products: Radiators, cooling modules, condensators, evaporators, air conditioners, lights (headlights and lamps), wiper systems, security systems (cylinders, locks, latches and handles), clutches, electric engines, alternators, start engines, friction materials, immobilizers, control systems (indicator switches), electronic sensors, electronic fuel injection systems (gas, alcohol, vehicle natural gas), ignition coils, sensors (speed, rotation, detonation), valves for canister outlet systems, pollutant emission controls.

Vallourec & Mannesmann Tubes - V&M do Brasil

Belo Horizonte/MG
Tel/Fax: 55 31 3328-2121/3333-4471

Products: Seamless steel tubes

Vanzin Indústria Autopeças Ltda.

Xanxerê/SC
Tel/Fax: 55 49 3441-5000/5040
www.vanzin.com.br

Products: Exhaust systems, tailpipes and flywheel protector for vehicles.

Vibracoustic do Brasil Indústria e Comércio de Itens de Borracha Ltda.

Taubaté/SP
Tel/Fax: 55 12 3601-2100/3602-2100

Products: Rubber mountings, buffers, and rubber items for the automotive industry.

Vibrasil Indústria de Itens de Borracha Ltda.

São Paulo/SP
Tel/Fax: 55 11 5567-4900/4913
www.vibrasil.com.br

Products: Rubber bushings, exhaust caps, rubber pads, rubber insulation trims, homocinetic sets, hoses.

Viemar Indústria e Comércio Ltda.

Canoas/RS
Tel/Fax: 55 51 3464-0708
www.viemar.com.br

Products: Steering bars, steering arms, steering columns, elastic joints, suspension pivot pins.

Visteon Sistemas Automotivos

Guarulhos/SP
Tel/Fax: 55 11 6465-9003/9494
www.visteon.com

Products: Air conditioning systems, electronic systems, internal systems, air conditioner, car radios, car radios with digital CD players, car radios with cassette players, fuel pumps, intake elbows, on-board computers, consoles, ABS brake systems controls, speed electronic controls, wipers electronic controls, front grilles, operation indicators for instrument panels, electronic injection, antenna module, starter motors, control panels for air conditioning, instrument panels, panel digital clocks.

Voith Turbo Automotive Ltda.

São Paulo/SP
Tel/Fax: 55 11 3944-4393/3491-1447
www.voith.com

Products: vibration shock absorbers, hydrodynamic brakes, gear shift systems, automatic transmissions.

Voss Automotive Ltda.

Diadema/SP
Tel/Fax: 55 11 4053 9521/9524
www.voss.com.br

Products: Fast coupling connections for pneumatic, fuel and refrigeration systems, fuel tubing, brakes, gear, wipers, suction tubing for compressors, electro-pneumatic connection, spiral for trailers, multi-layered tubes, corrugated tubes, brass connections, nylon automotive tubes.

Vulcan Material Plástico Ltda.

Rio de Janeiro/RJ
Tel/Fax: 55 21 3362-2336/3371-2828
www.vulcan.com.br

Products: Floor lining, seat lining for buses, seat lining for cars, roof/side door lining, sun visor

Wahler Metalúrgica Ltda.

Piracicaba/SP
Tel/Fax: 55 19 3429-9000/9003
www.wahler.com.br

Products: Actuators, temperature sensors, thermo-switches, thermostats, flexible pipes and EGR valves.

Wapmetal Indústria e Comércio de Molas e Estampados Ltda.

Barueri/SP
Tel/Fax: 55 11 4789-8900/8956
www.wapsprings.com.br

Products: Springs for engine valves, technical springs, clamping pieces, supports, tubes, valves.

Weg Indústrias S.A.

Guaramirim/SC
Tel/Fax: 55 47 3276-4000/5500
www.weg.com.br



High performance machines in Brazil. For those who demand more.



Doing more for customers involved in construction, sanitation, agribusiness and infrastructure in Brazil.



Case IH in agriculture, Case in construction.

CNH trademarks, Fiat group, doing more for the development of our country.



Products: Industrial, anti-corrosion, normalizes, anti-fungus, anti-microbial paint for wood and metals, dust and hybrid pain, epoxies and polyester.

Weidmann Tecnologia em Plásticos Ltda.

Piracicaba/SP
Tel/Fax: 55 19 3429-1160/3424-3585

Products: double injection plastic parts and conventional injection plastic parts for interior, exterior and engine chamber.

Westaflex Tubos Flexíveis Ltda.

Araucária/PR
Tel/Fax: 55 41 3031-3433/8231
www.wdbnet.com.br

Products: Tubes and systems for air transportation and air circulation, noise reduction ducts, thermal protection ducts and tubes for air transportation.

Wetzel S.A.

Joinville/SC
Tel/Fax: 55 47 3451-4033/4048
www.wetzel.com.br

Products: cast parts, aluminum and shell pressure cast parts.

WHB Componentes Automotivos S.A.

Curitiba/PR
Tel/Fax: 55 41 3341-1900/3348-3605

Products: Machining for engine headers, crankcase, wheel hubs, steering casings, steering columns and valves, connection rods, elbows, brake spiders, calipers, supports, engine flywheel, differential boxes.

WHB Fundação S.A.

Curitiba/PR
Tel/Fax: 55 41 3341-1800/1835

Products: gray and nodular cast iron wheel hubs, steering casings, brake spiders, calipers, brake disks, brake drums, engine flywheels, differential boxes.

Wiest S/A

Jaraguá do Sul/SC
Tel/Fax: 55 47 3372-5100/5151
www.wiest.com.br

Exhausts Division and Automotive Systems: Jaraguá do Sul/SC

Products: Exhaust systems for light and heavy lines, exhausts, catalysts and tube solutions.

Steel tubes division

Joinville/SC
Tel/Fax: 55 47 3451-7802/7801

Products: Tube solutions, coils, structural tubes for P.P.W anti-corrosion treated trailers, tubes for civil construction segment(pipes and electro ducts), thermal treated tubes (boiler and thermal exchange), seamless and seamed cold drawn tubes, machined /stamped bushings, steering bars, mechanic steering mechanisms, tube sets for hydraulic steering, adjustment connection, sparkplug/wheel switches, electric engine casing, star engine

casing, agricultural universal joints, transmission mechanism levers, steering jacket, chassis transverse piece, tubular bars for trucks, machined, welded, stamped and curved tube parts.

Wirex Cable S.A.

Diadema/SP
Tel/Fax: 55 11 2191-9400/9450
www.wirexcable.com.br

Products: Alternator cables, battery cables, connectors, copper braids, sockets for lamps, metallic terminals.

Witzenmann do Brasil Ltda.

Pinhais/PR
Tel/Fax: 55 41 3668-0020/0014
www.witzenmann.com.br

Products: Corrugated exhaust hose.

Wolpac Sistemas de Controle Ltda.

Ferraz de Vasconcelos/SP
Tel/Fax: 55 11 4674-1777/1778
www.wolpac.com.br

Products: Electronic and electro mechanic turnstile, mechanical turnstile, access/attendance controls, turnbuckle and revolving doors for buses.

Yazaki Corporation do Brasil Ltda.

São Paulo/SP
Tel/Fax: 55 11 2122-7700/7878
www.yazaki.com.br

Products: Electric harnesses.

YTK Motta Indústria e Comércio de Tubos e Peças Ltda.

São Paulo/SP
Tel/Fax: 55 11 6113-9888
www.ytkmotta.com.br

Products: Steering bars, bearings, spherical pins, suspension pivots, steering terminals.

Zanettini, Barossi S.A. Indústria e Comércio

São Paulo/SP
Tel/Fax: 55 11 6915-3800/2274-5331
www.zb.com.br

Products: Handbrake levers, welding for bodywork, chassis and engines, hinges, wiper mechanisms, stamped parts, pedals, suction tubes, oil level wands.

Zen S.A. Indústria Metalúrgica

Brusque/SC
Tel/Fax: 55 47 3255-2800/2810
www.zensa.com.br

Products: Start Impellers, bearings, pulleys, pinions, blowers for alternators.

ZF do Brasil Ltda.

Sorocaba/SP
Tel/Fax: 55 15 4009-2525/2230
www.zf.com.br

Products: Ring gears, front axles, gears for transmissions, pinions, plugs, automatic transmissions, mechanic transmissions and power shifts.

ZF do Brasil Ltda. - Divisão Sachs

São Bernardo do Campo/SP
Tel/Fax: 55 51 3343-3000/3110
www.zfsachs.com.br

Products: Clutches, suspension shock absorbers, steering bars, disksfor clutches, bearings for clutches, metal-rubber parts, suspension pivots, clutch plates, steering terminals.

ZF Lemförder do Brasil Ltda.

Sorocaba/SP
Tel/Fax: 55 15 4009-7003/7070
www.zf.com

Products: Steering bars, reaction bars, connection bars, v shaped bars, pull rods for stabilizing bars, steering end plates suspension joints, for cars and commercial vehicles.

ZF Sistemas de Direção Ltda.

Sorocaba/SP
Tel/Fax: 55 15 4009-5777/5850
www.zf-lenksysteme.com

Products: hydraulic steering pumps, angular cases, steering boxes, steering columns, middle axle, oil tank for hydraulic steering.

Zinni & Guell Ltda.

Guarulhos/SP
Tel/Fax: 55 11 6480-4448/2680
www.zinnieguell.com.br

Products: latches, locks for hoods, window operation mechanisms.



**Around the world,
bringing together ideas and people.**



Our technology is used worldwide by the automobile industry and we are always searching for ways to make things even better.

Our commitment to improving the way we live keeps us striving to develop the future.

São Bernardo Plant
Av. Robert Kennedy, 675
09895-003 - São Bernardo do Campo - SP - Brazil
Tel. 55 (11) 2172-6000
Fax 55 (11) 2172-6006

Ibirité Plant
Av. Industrial, 1850 A
32400-000 - Ibirité - MG - Brazil
Tel. 55 (31) 3505-5002
Fax 55 (31) 3505-5009

Camaçari Plant
Via Axial, 1221 - km 5
42810-220 - Camaçari - BA - Brazil
Tel. 55 (71) 3632-7400
Fax 55 (71) 3632-7408

**Commitment
Responsibility
Excellence
Respect**

ThyssenKrupp
Automotive Systems do Brasil



T K A S B
10 ANOS

Developing the future.